

Jungle Terrace Civic Association

40th Ave N

66th St. N.



Boca Ciega Bay

22nd Ave N

Awards, Checks, Grants, New Community Police Officer



City Council Chair Gerdes presents JTCA with "2015 Community Leadership Award" by Keep Pinellas Beautiful, affiliate of Keep America Beautiful.



SPPD Officer Matt Wilson



City GRANT check to JTCA!

\$5,000 Check from Bill Edwards (due to JTCA) to Childs Park Rattlers serving 300 youth with 45 Volunteers for 22 years. Presented to Coach Johnny Johnson, 20 years.

Plus \$350 check for Johnny's team from Jungle Terrace Civic Assn.



JCTA Awards

Council of Neighborhood Associations 2014

Newsletter of the Year Award 2004

City Beautification Award 2010

Mayor's Neighborhood Award 2012

ENTWINED Sculpture 2013

Pinellas TRAIL "Enhancement Award" 2014

Keep Pinellas Beautiful "Leadership Award" 2015



Our Next JTCA Meeting is
Monday, October 19, 2015

Social 6:45 p.m. — Meeting 7:00 p.m.

WALTER FULLER CENTER

7891 26th Ave. North

Dr. Connie Kolosey, Principal, Azalea Middle School

IMPROVEMENTS in Walter Fuller Park



Designated, Painted, Signed parking for Dog Park



Railings on ALL Shelters NEW Paint by JOE, 35 years experience.



New Railing around inflow culvert.



“Charging Station” for cell phones and electronic devices.



Large dead Palm removed, better views.



ReCycle container in WF



Jungle Lake Clean Up TEAM, Lauren Sanders, JTCA Secretary, Cedrik and Johnny, Park City Staff, John Sweeny, JTCA Vice President. Plus Jim DeBee, Parks Foreman in boat with helper, and Dr. Ed.

"No problem, Dr. Ed. My pleasure to spray Jungle Lake. Thanks for the heads up on the condition of the lake."

Chris Allen, Stormwater Lakes Foreman



8 Sections of Sidewalk REPLACED.



3 Driveways REPLACED



Brighthouse TV Commercial filming at Walter Fuller Rec Center.

5 NEW Crosswalks in WFP, with “Stop Bar”



Flooding Standing Water in Soccer Center Parking Lot



30th Ave N in Walter Fuller Park



Graded New Surfacing Material + New Concrete Driveways for Soccer Center Parking Lot.



Swim Pool Parking Lot Walter Fuller Park

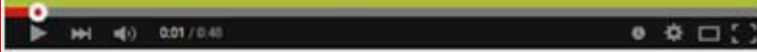


78th St. along Park prevents parking on grass. Appreciate use of existing pole for sign



Sunrise while tending Volunteers Garden.

**On July 25th, 2015
Mayor Rick Kriseman
cut the ribbon on
Vertical Ventures St. Pete!**



Vertical Ventures Ribbon Cutting

Mayor Rick Kriseman cut the ribbon on Vertical Ventures.

Video: one-of-a-kind ribbon cutting ~
click

[here](#)

JTCA Sustainer Level

BE a Jungle INVESTOR

Tax Deductible Charity JTCA is a 501(c)3 Tax Exempt Nonprofit

Invest in the Health, Beauty, Safety of Our Neighborhood through JTCA

Top 4 levels receive a Recognition Plaque

Next 5 levels receive a Certificate of Appreciation

Life Member Certificate to ALL at \$400 and higher.

JTCA Results: www.Jungle-Terrace.org/RESULTS

TARZAN Investor	\$25,000	TIGER Investor	\$750
JANE Investor	\$15,000	LEOPARD Investor	\$500
ELEPHANT Investor	\$5,000	PANTHER Investor	\$250
GORILLA Investor	\$2,500	LIFE Member Investor	\$400
LION Investor	\$1,000	ALL Amounts Help	\$Your Choice

Annual Charitable Gift and/or Estate Plan in Will/Trust. Contact John Sweeny, jsweeny@tampabay.rr.com or 727-343-4519.

PayPal: JungleTerrace@gmail.com, or www.Jungle-Terrace.org and click DONATE.

Check to JTCA, c/o Jill Silverstein, 8045 28th Ave. N. St. Pete, FL 33710.

JTCA Membership and Advertising

JTCA is a 501(c)3 Tax Exempt Nonprofit

To join Jungle Terrace Civic Association, please go to PayPal (below), or mail your dues.

\$40 per member, one member/vote per household. Due in January.

Please consider donating more than the membership dues, this is greatly appreciated!

To Advertise, click here [Newsletter Advertising](#)

NAME: _____

ADDRESS: _____ CITY: _____ STATE: _____ ZIP: _____

PHONE: _____ E-MAIL: _____

Mail to: JTCA, Jill Silverstein

8045 28th Ave. No., St. Petersburg, FL 33710 • Phone 727-289-3004

Dues: \$40.00 + Donation: _____

Please make checks payable to: **JTCA** or **Jungle Terrace Civic Association**
Go to www.Jungle-Terrace.org and select the [PayPal](#) donate button.



["What Do I Get for My \\$40 Dues"](#) on website, click on title.

SCIENCE CENTER After-School IT Programs

When the school day ends join the Science Center for learning and fun!

Students ages 13 and up...here's your opportunity to participate in an open lab environment while receiving instruction in programs like Coding, Cyber Security Training, and earning Microsoft® Certifications. Now under private leadership of www.CareerSourcePinellas.com.

PRICE: \$80 per week

LOCATION: 7701 22nd Ave. N., St. Petersburg, FL 33710

INFORMATION: www.sciencecenterofpinellas.org
or call (727) 608-2529.

WorkNet Pinellas, Inc. d.b.a.

SCIENCE CENTER
explaining our world

Extra Closet

A/C Storage
(727) 344-1604

A/C Mini Storage
Inside spaces
Moving supplies

Professional Pest Ctrl
U-Haul Rentals
Best prices in town

Jungle Terrace Residents

- Free month rent
- Free lock
- Mention Jungle Terrace Civic Association



Ed

Johnny

stpete@extracloset.net

Part time jobs available ???

2401 Anvil St.
St. Petersburg, FL. 33710

Just off 22nd Ave next to Peltz Shoes Tyrone Square Mall Area

www.tyronesquaremazda.com

ALWAYS
FAIR.
ALWAYS
SQUARE.

**TYRONE
SQUARE
MAZDA**

727-344-3344

Your Neighbor...hood Auto and Service Center

Serving your community for over 10 years
We take pride in the fact that we are
"Always Fair. Always Square."

New Mazdas. Quality used. Certified pre-owned. Cars and Trucks
with Legendary Service Before and After the Sale.

Our state of the art service department can
accommodate any make and model.
See us for all your service and tire needs.

Tyrone Square Mazda
3300 Tyrone Blvd
St Petersburg, FL 33710
727-344-3344

OPEN
MON.-FRI. 9AM-8PM
SAT. 9AM-PM
SUN. 11AM-5PM (Sales)

WWW.TYRONESQUAREMAZDA.COM



MURAL ART Community Project for the PUBLIC

by Volunteer neighborhood nonprofit 501(c)3 Jungle Terrace Civic Association.

NEW Movie Theaters at TYRONE MALL

LOCATION: Across BRIDGE from NEW Tyrone Mall MOVIE Theaters to Pinellas Trail, between Mile Markers PT-0185 and 0186. Approach on Trail from 22nd Ave North immediately West of Tyrone Mall.

THEME: Jungle

Wall is 18 feet high.

Mural to start 6 – 7 feet above the ground to prevent graffiti on it.

Width is 7 feet from left window to first concrete joint, 17 feet to right to next concrete joint 10 feet between right concrete joint and right window.

34 feet total width between two windows (mural does not have to be this large)

Width of Mural – “toward” centered on BRIDGE – which is slight right in the space.

Surface: smooth, painted poured concrete with minimal-to-no texture.

PAINT STIPEND: Paid by JTCA

GRANT: \$1,000.00 CONTACT: Linn Sennott, lsennott@tampabay.rr.com, 727-599-5819



CAUTION!

10. **Online purchases.** Does the Web address have an “https” at the beginning? If not, that’s your cue to take your online shopping elsewhere.

“

I’ve learned that you can tell a lot about a person by the way he/she handles four things: a rainy day, the elderly, lost luggage, and tangled Christmas tree lights.

”

398-5515
www.HalesAC.com
HALES' A/C SERVICE Inc.
The COOL Choice Since 1986
Celebrate our 25th Anniversary
\$25 OFF YOUR NEXT SERVICE CALL

RedCar11@verizon.net
DAN'S HAULING, INC.
Dan Lombardi / Vice-President
8110 30th Ave. N., St. Pete, FL 33710
(727) 341-1135 • Fax (727) 381-1114
WE HAUL ANYTHING!
• Construction Sites
• Demo Work
• Garage Clean-Outs
• Yard Clean-Ups
• Drop Off Service
• 12 Cu Yard
• Same Day Svc.
• Free Estimates

AZALEA MIDDLE SCHOOL

Greetings from Azalea Middle School,

We completed my 4th year as Principal very successfully . . . marked by both accomplishment and growth. Our test scores for 7th grade Civics and 8th grade Science are in. Both are up significantly over the previous year, with much larger jumps than those of the district as a whole. Meanwhile, our discipline and arrest numbers are down significantly over the previous year. At Azalea Middle we are creating a quality learning environment for our students.

When you drive by the school, you'll notice that we are in the middle of an extensive remodel project! This project will be completed in phases with the contractors working around us while we continue to carry on the business of educating our students. All of the windows in the building are being replaced and both the interior and exterior walls are being replaced and painted. This summer, they completed the administration building, the stairwells and the rooms surrounding the stairwells. The project is scheduled for completion summer of 2016. In the meantime, please pardon our dust! When we're done, Azalea Middle will look shiny and new (with no portable classrooms!)

This weekend they re- sod the front of the school. They had to regrade because water was coming in at the base of the building. This is a huge project!

Thank you Dr. Ed and the JTCA Team for your work in fertilizing the plants that you donated in the service center area. With summer rains, and the nutrients, they are sure to continue growing strong. Thanks for being such great neighbors!

Dr. Connie Kolosey, Principal, Azalea Middle School

Walter Fuller Recreation Center NEWS

Parks and Recreation Staff are really excited about the Fall and Winter 2015-2016 Programs planned for our neighborhood. Pickleball and Open Senior Basketball highlight our AM hours. Open Pickleball is also offered every Thursday Night from 6 PM to 8 PM.

Our evening Fee Classes include: Ballroom Dancing, Zumba, Tae Kwon Do and Gymnastics. Our Elementary and Teens are served by our Licensed Before and After School Child Care Programs. Middle and High School youth are invited to participate in our Fall Dodgeball Programs and Winter Co-ed Flag Football Leagues.

You will notice Recycling containers both inside and outside our Recreation Center as recycling efforts are underway. Call us at 893-7443 or visit our Web at www.stpeteparksrec.org. *Come join in the fun!*
Chuck Boehme, Recreation Supervisor II

frame station and gallery

1155 Pasadena Avenue South
South Pasadena, FL 33707
Ph. (727) 344-2202
Behind Horse & Jockey Pub

Taking care of all your framing needs for over 30 years

OPEN

SALE

HOURS
MON-FRI 10-6
SAT 10-4
CLOSED-SUN

Angle's list
2013 SUPER SERVICE AWARD

IMPROVEMENTS to Pinellas Trail

Dr. Roland Martens, at a meeting with County Director of Parks and Conservation, who indicated there is more money in the budget to increase the personnel on the Pinellas Trail.

TIP ~ “Trail Improvement Party” ~ 6 Heart-y Volunteers optimized this section. 3 Truck loads to Brush Site. Scott and I continued working until 1:30pm, taking 3 more truckloads to the brush site. Total 6 truck loads.

SAFETY: 3 NEW Improved Rapid Flashing Beacons with Enhanced Signs! Double lights on each post! Solar powered!



Adopt a Trail Report: 9 Volunteers, 115 Hours Pieces: 426 Trash + 2,600 Bio Litter Bags: 17 Pounds: 54 Trash + 580 Bio Litter Mile/Section 9 is coming to perfection as a “Linear Park.”

TIP ~ Sept. 26, CareFest project, 8 JT Volunteers joined by 10 Volunteers from “City on a Hill Church.” 2 trucks+ day laborer, trimming palm trees + +.



City created drainage “ditch” to solve flood problem at Trail Entrance 30th Ave/71st St N.



**5310 66TH STREET NO.
ST. PETERSBURG, FL 33709**
(727) 541-2453 (727) 549-0785 fax
www.ActionWheelsSport.com

actionped@aol.com



SCOOTERS



**ELECTRIC
VEHICLES**



BICYCLES

Join our FREE
Email Mailing List

Privacy by SafeSubscribe™

www.affordablemowers.com

Affordable Mowers

ECHO shindaiwa KOHLER SPINNA & STRATTON

TORO **Kawasaki**

Periair@msn.com

3800 58th St. North
St. Petersburg, FL 33709
Phone (727) 347-3103
Fax (727) 341-1413

Sales, Service
& Repair



TAXI

(727) 367-3702

www.BatsTaxi.com

Fax 367-8354
P.O. Box 66330 • St. Pete Beach, FL 33736

DRIVERS NEEDED - PLEASE CALL for DETAILS

Willow Tree Nursery, Inc.

4401 49th St. N. 727-522-2594

Quality Trees 🌳 Shrubs 🌳 Citrus 🌳 Vegetables 🌳 Fertilizers
Pesticides 🌳 Mulch and Soils 🌳 Ponds and Pond Supplies
Decorative Containers 🌳 Clay Pots and Saucers

www.WillowTreeNursery.com



Newsletter Advertising

Hundreds of people in our area can purchase your services and products. Free advertising is offered to neighborhood businesses, on a donation basis. Electronic newsletters are sent January, April, July and October.

LIVE Links to your website + email. One click to get to you!

The suggested annual minimum donation for 4 issues: (75% reduction over paper)
Business Card Size Ad \$45.00 (quarterly \$11.25)
1/4 Page Ad \$135.00 (quarterly \$33.75)
1/2 Page Ad \$230.00 (quarterly \$57.50)
Full Page Ad \$410.00 (quarterly \$102.50)

Email: JungleTerrace@gmail.com

WANTED:

Room to rent in **Jungle Terrace/ Prada**.
\$450- \$700 range if utils./bath/kitchen area incl.
Ideal is a shared house...
Female, Age 48, FL Driver's License

Don Can Fix It!

Yes he can!

Home Maintenance and Repairs

From Furniture Assembly to Hauling; from Pressure Washing to Yard Work
Let us whittle down your "Honey Do" List

Need it fixed? Give us a call!

Phone: 727-688-3946

info@DonCanFixIt.com

www.DonCanFixIt.com

Don Rogers
a Jungle Terrace Resident
Lic #11-00032836



7755 38th Avenue North
St. Petersburg, FL 33710
(727) 343-0824
www.StPeteSmiles.com



CALL CHARLES REPAIR SPECIALIST

- Faucets
- Toilets
- Water Heaters
- Sewer & Drain Cleaning
- Leak Repair

727-522-2508

SMALL JOB SPECIALIST!
SENIOR DISCOUNT

#CFC1427888



BIKE PATH: WFP to Pinellas Trail



“Concrete Masters” with Dr. Ed.
Foreman Keith Ford 2nd from left.

St. Pete City Council Forum League of Women Voters Monday, October 5, 2015, 7:00 pm

Audience can arrive 6:30 pm to write questions.

Voter registration from 6:30 – 7:00 p.m.

Forum begins at 7:00 p.m.

City Council Chambers,
2nd floor, 175 5th St. N., St. Petersburg

District 1 Monica Mary Abbott; Charles W. Gerdes

District 5 Philip Garrett; Steve L. Kornell

District 7 Winthrop “Will” Newton; Lisa Wheeler-Brown

The League does not support or oppose any political party, candidate, or group that supports candidates.

GREG RACE White House Custom Apparel & Graphics

7183 30th AVE NORTH
ST. PETERSBURG, FLA 33710
727-321-7398

www.whcustom.com

James R. "Jim" Kennedy, Jr., Esq.



821-6888

Since 1982 856 2nd Avenue North, St Petersburg, FL. 33701

PERSONAL ALLENTION FROM AN EXPERIENCED ATTORNEY

Wills & Trusts

Family Law

Personal Injury

Auto Accident

Medical Malpractice

Jim@jrklaw.com

FREE INITIAL CONSULTATION BY PHONE OR IN OFFICE

REAL BBQ & GREAT RIBS!



Rib City

Rib City \$5.00 OFF

Two Baby Back Rib Dinners!

Valid at 1550 66th St. N. location only.
Baby Back Rib Dinners = Full Rack, 1 1/2 Rack, Rib & Rib, Tony's Combo, Ribs & Shrimp, Pick 2 & Pick 3 entrees. Not valid with any other offers, coupon required. Expires 12-31-15. JT

For Take-Out Orders Call 343-1103

1550 66th Street North

(1/4 Mile South Of Tyrone Square Mall)

View Our Entire Menu Online @ www.ribcity.com

56 YEARS ON TYRONE BLVD. NORTHWEST COLLISION

GREG DESCENT - OWNER

3577 TYRONE BLVD. N.
ST. PETERSBURG, FL 33710



LIFETIME WARRANTY

FREE ESTIMATES

727-347-8945

FAX: 727-344-1357

NORTHWESTAUTOCOLLISION.COM

COMPLETE AUTO BODY REPAIR & AUTO DETAIL CENTER

Newsletter Articles

Do you have a letter, issue, article, or recipe you would like to publish in the JTCA newsletter? We welcome letters, comments, and contributions from our neighbors.

We invite you to create articles that will inform our neighbors about items of interest relating to our neighborhood. Some suggested subjects are Pinellas Trail, Tyrone Corridor, Tyrone Square Mall, the Dog Park, Pool and Tennis Courts, Soccer League, Azalea Little League, Walter Fuller Park, the Rays Complex, History of Abacrombie Park, our Linear Park 30th Ave. N., the two schools in our area, Walter Fuller Center, mobile home park on 34th Ave., recipes, etc.

Photos are welcome. Articles and photos must be in digital form (word docs., jpeg photos, etc.)

Dr. Ed Carlson JungleTerrace@gmail.com

Advertising inquires

http://www.jungle-terrace.org/JTCA_Advertising.pdf

Article and Advertising Acceptance Policy

Articles will not be accepted which in any way is considered to be lacking in judicious good taste or moral propriety, or which demeans any particular race, language, religion, or political view. Articles of a political nature will not be accepted. Advertising of a controversial political nature will not be accepted. Advertising found to contravene truth, exaggerate the description of a product or service, or containing fraudulent statements will not be accepted.

Advertising is accepted with the conditional understanding that the sponsoring company and principal beneficiary of the advertisement is ultimately responsible and liable for its content.

We reserve the right to **reject or revise** all copy submitted, or to cancel advertising at any time.



Jungle Terrace Web Site

We have a web site for
Jungle Terrace Civic Association.

www.Jungle-Terrace.org

The web site has important organizational information, a Neighborhood map, Newsletters and much more.

Questions contact Webmaster **Johan Miller**
Johan@wkcmedia.com

Mark Your Calendar 2016 Meeting Dates

Social 6:45 P.M. Meeting 7:00 P.M.

January 18th

April 18th

July 18th

October 17th



Officers and Board Members

President	Dr. Ed Carlson	347-0369
Vice President	John Sweeny	343-4519
Secretary	Lauren Sanders	343-4433
Treasurer	Jill Silverstein	289-3004

Board of Directors:

Roland Martens	347-3282
Yaro Markewycz	344-1869
Rich Meredith	347-2550

Committees

Newsletter Editor	Ed Carlson	347-0369
Traffic	Linda Mouriski	381-4845
Newsletter Committee	Eileen Dardis	343-4015
CONA Representative	Roland Martens	347-3282
Green Thumb	Jill Silverstein	289-3004
Webmaster	Johan Miller	

Jungle Terrace Internet Discussion Group



JTCA has an Internet Discussion Group for the latest "JT Happenings". To join, go to http://groups.Yahoo.com/groups/jungle_terrace or go to the Jungle Terrace web site at www.jungle-terrace.org for a link and how to join.

IMPROVEMENTS in Jungle Terrace Neighborhood

New & Relocated Neighborhood Businesses:

Jungle Prada “JP” Tavern ~ OPEN!

JP Tavern is now open in the Jungle Prada ~ expansion of successful business model of Old Northeast Tavern on 7th Ave. N. and 2nd Street downtown.

“Busy and enjoyable every time I have been there.” **Dr. Ed**
 “Mary and I were there last week and it was great!

Definitely going back. Good food, 5 blocks from my house is hard to turn down.” **John Sweeny**, JT V. P.

Brass Tap Craft Beer Bar on Tyrone near Tires Plus (under construction)

The Pita Place on 66th St North & 30th Ave (under construction)

Laura’s Five Star Jewelry on 66th Street and 38th Ave North (in place of oil change chain)

Northwest Collision moving up Tyrone Blvd to increase space. (under re-construction) Mediterranean Style, Tile Roof, Rock on Columns, Extensive Landscaping.

City Lot Paved and Bike Path from Pinellas Trail to Bus Stop on Tyrone Blvd.



Old look



New look and function



New NWCC front



New NWCC back



(continued)

IMPROVEMENTS (continued)

OVERGROWN Sidewalk on 22nd Avenue North



CODES Clean UP



Removed by Community Services after 3 months



Re-Design for Safety of Pedestrians

Tyrone Frontage Road, 30th Ave N, 71st St. N.

New Sidewalks = **BLACK**

Painted Crosswalks = **RED**

Thank YOU, Mike Frederick and Debbie Larson!



DEMOLITION of Derelict House along Pinellas Trail

Vagrants and drug dealings were reported multiple times In January JTCA got Codes to schedule for demolition.

Neighbors have beautiful iron fence and landscaping.

We talked today. Great appreciation for JTCA!

Thank You: **Todd Yost, Rob Gerdes, Margie Nichols** and **Mike Dove**.

NEW signs to prevent Tractor Trailer Trucks from overnight "camping" on 26th Ave. No. Appreciate use of existing pole for sign.

Jungle Terrace Civic Association

“Scrubbin Da Burg” 7/23/15

TASCO Teens from Walter Fuller Center

Group 1: Spread 100 bags of Pine Bark mulch [City Grant] in Volunteers Garden, 2 Garden on 30th Avenue, and at Azalea Middle School. JTCA donated 5 Jatropa bushes to Azalea Middle School.



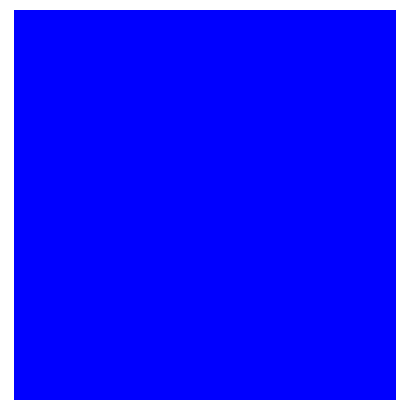
Group 2. Trim 8 Palm Trees, 2 Oak Trees. “Deboot” 12 Palm Trees (huge job). Raked beneath trees! 4 Truck-loads to the Brush Site.



Group 3: De-Litter Pinellas Trail at 22nd Ave N going north to Tyrone Overpass. Remove 31 bags of litter along Tyrone Mall section of the Pinellas Trail.



More of Group 3:



**Property owner by the TRAIL
trimmed palms, removed invasive plants,
and mowed on their property and by
the TRAIL.
KUDOS!**

“Thanks so much for sharing this, Dr. Ed.
Adjacent owners are inspired by your group!”
Sandy Wilson, Volunteer Program Manager,
Pinellas County Parks and Conservation Resources

Important Phone Numbers



Animal Services + Traps (County)	582-2600
Assistance & Resources	211
Emergencies	911
Men/Women/Kids Groups, Rides, Hope Lodges, Resources	1-800-227-2345
City Council Office	893-7117
Codes (get a case number)	893-7373
Congressman David Jolly	1-202-225-5961
Elderly Information	893-7101
Free smoke detector or home inspection	893-7233
Garbage Collection and Rodent Control	893-7334
Graffiti	893-7394
Library – St. Petersburg College	341-7199
Mayor’s Action Center Action@StPete.org	893-7111
Mosquito Control	464-7503
PARC (Pinellas Assoc. for Retarded Children)	345-9111
Pinellas Trail info and issues	582-2100
Pinellas Trails and Bike Lanes GUIDE www.PinellasCounty.org/trailgd	
Police (non-emergency)	893-7780
Community Policing Officer	551-3183
Public Service Rep. (Susan Fuchs)	893-4137
Schools	
Azalea Elementary	893-2187
Azalea Middle	893-2606
74th St. Elementary	892-2120
Senator Bill Nelson – Orlando Office	1-407-872-7161
Senator Marco Rubio	813-977-6450
Sheriff (non-emergency)	582-6200
SPCA	586-3591
Street Lights (Duke Energy)	1-800-228-8485
Tip Line	892-5000
Walter Fuller Center)	893-7443
Walter Fuller Pool	893-7636
Water & Sewer Problems	893-7261

NOTES:
