

Circulation 600

Boca Ciega Bay



Jungle Terrace Civic Association

In this issue

Annual Membership Dues form...3
 Committees.....19
 Editorial by Steve Plice.....6
 Gardening Tips.....11
 Home of the Month.....17
 Important Phone Numbers.....18
 JTCA Discussion List.....15
 JTCA Web Site.....15
 July Meeting.....1
 Monthly Meeting Minutes.....2
 Neighborhood Nite at the
 Tropicana Field.....12
 Newsletter Articles.....18
 Officers and Board Members...19
 Pinellas Trail Improvement...10
 Raheb Health Update.....16
 Science Center news.....9
 Tyrone Mall Renovation.....12
 Walter Fuller Center news....8
 West St Pete Library news....8

The next JTCA Meeting is scheduled for Monday, August 15th., Social 6:45PM, Meeting 7:00PM
 The meeting will be held at the Walter Fuller Youth Center, 7891 26th. Ave. N., St. Petersburg.

On the Agenda

- ◆ Hurricane Preparedness
 Speakers from: Home Depot, Raymond James, and Independent Insurance Agency
- ◆ Rezoning Residential to Commercial
 66St. N. & 9th. Ave. N.



Newsletter Printed by



Ice Cream Social

Monday August 15th
6:45PM to 7:00PM

Come and enjoy a dish of Ice Cream at our August meeting. Bring your neighbor.



Detective Randy Adams of the St. Petersburg Police Department gave a very informative presentation on "Identity Theft" at our July monthly meeting.

Annual Membership Dues Due in January page 3



Mike Krautkremer's Lawn Maintenance

Residential/Commercial
Licensed and Insured

Landscape Services

Mow

Edge

Trim

Hedges

Mulch

Honest

Dependable



Free Estimates

Call (727) 647-0794

Your Neighborhood
Lawn Service

Give a person a fish and you feed them for a day; teach that person to use the Internet and they won't bother you for weeks.

EAGLES NEST RESIDENTS, INC.

7801 34TH Ave North
St Petersburg FL 33710

Phone & Fax (727) 347-7909

Resident owned Mobile Home Community

Age 55 and over RV'S WELCOME

rental and sales of mobiles



Vickie Lindquist

COMFY CORNER PRESCHOOL

NEW !!!

2 blocks west of Tyrone Square Mall

2401-72nd St. N.
St. Petersburg, FL 33710

(727) 384-6956
Fax (727) 384-6958

Minutes of the July 18th, 2005 Monthly Membership Meeting

The July 18, 2005 meeting of the Jungle Terrace Civic Association was held at the Walter Fuller Center, 7891 26th Avenue North promptly at 7:00 p.m., with 37 people in attendance. **Our President Tom Killian** called the meeting to order and the pledge of allegiance was given. **Tom Killian** then gave a brief overview of our Association and introduced to all in attendance the Public Service Representative for the JTCA area, **Ms. Susan Fuchs**. The minutes from our June meeting were then accepted, as was the treasure's report as read by **Linda Mouriski**. Since our CPO, **Rich Hladik** was on assignment, Officer **John Douglas**, who is the **CPO for the Azalea neighborhood**, addressed the attendants. When Officer Douglas asked if there were any concerns, a member advised there was an attempted home burglary near 36th Avenue and 68th Street that occurred sometime between 11:00 p.m. and 4:00 a.m. The Officer stated he would follow-up.

The featured speakers, who addressed identity theft, were then introduced. **Detective Randy Adams and Detective Nancy Pillucere**. According to Detective Adams, contrary to popular belief, most identity theft does not occur through the Internet but rather the result of someone stealing your mail and obtaining your personal information, like bank statements. Often, subjects retrieve applications for credit cards, send them in and get a card in your name to use. During a burglary, perhaps your stored checks are found. One or two checks may be removed from your stock; well out of sequence so you are unaware they are missing until they hit your account.

Detective Adams advised to always review your credit card and bank statements and contest any disputes. When you close an account be sure to shred the old stock. Check you balance on line every day or two to make sure the balance is correct. If you have a problem, cancel the account immediately. If you are a victim, notify all three credit bureaus of the problem and a fraud alert will be placed on your account, which will remain for 7 years. However, credit is applied for under your name, the merchant will be advised and you will be contacted to ensure you wish to have the credit extended. If you are involved with a small business, be mindful of business checks being able to be duplicated by using check stock issued in locally obtained check writing software and scanning signatures.

Detective Pillucere advised to watch family members. Further, be aware of scams that are going around including: Check washing, Progress Energy or City employees coming to your home without you initiating the call, the bank examiner, the gambling scheme, Nigerian/inheritance scam or the Canadian lottery bit. Always be alert of any unusual devices attached to an ATM machine and alert the police if you find something suspicious. Watch for gypsy tree cutters, painters or handyman services.

After the speakers' presentation, **Tom Killian** then gave special thanks to **Betty Linkletter** for the homemade cookies she brought. **Steve Plice** then advised of the upcoming CONA meeting. He stated Progress Energy would be advising of a program where each home meter would be equip with cellular communication ability. This would allow the meter to "call in", if you will, with the usage on a monthly basis thus negating the need to have an employee read each meter manually. Also on the agenda, CONA will address their priorities, one of which is hav-

(Continued on page 7)



Rolls-Royce



JAGUAR

CHRYSLER





Ford

VOLVO



**Bill GRAMLEY'S
AUTOMOTIVE**
347-7676

JAGUAR - MERCEDES
BMW - VOLVO - ROLLS-ROYCE
EUROPEAN DOMESTIC JAPANESE

Extended Warranty

Service & Repair

Foreign & Domestic

3984 Tyrone Blvd. N., St. Petersburg, Fl. 33709

SUV's



Pickup Trucks



HONDA



Mercedes-Benz

GM



BMW

TOYOTA

If you get to thinkin' you're a person of some influence, try orderin' somebody else's dog around.

How is it one careless match can start a forest fire, but it takes a whole box to start a campfire?

Annual Membership Dues Due in January

If you have not renewed your membership in the Jungle Terrace Civic Association, please take a moment to fill out this membership form and bring it to the next meeting or send your dues to the address below.

This is your neighborhood association and we work for you and your neighborhood. Please include \$12.00 per household annual membership dues, due in January of each year. If you can donate more than the membership dues it would be appreciated. We use the money to publish and mail your newsletter, hold a monthly membership meeting and sponsor an Easter Egg Hunt for the neighborhood children.

We are a Nonprofit 501 (c) 3 Tax Exempt Civic Association.

NAME: _____

ADDRESS: _____ ZIP _____

PHONE: _____

E-MAIL: _____

Dues: \$12.00 Donation amount: _____

Please make checks payable to:

Jungle Terrace Civic Association for \$12.00 .

Mail to: **Tom Killian, 2275 80th Street N. , St. Petersburg, FL. 33710** Phone 343-2041



Your Neighborhood Tax Professionals



**Helping Individuals,
Businesses, Estates & Trusts
Since 1985**

When it comes to having your income taxes prepared and filed, choose National Income Tax & Accounting, Inc.

Our approach is simple: offer professional, personalized service at reasonable prices.

Professional

At National Income Tax your taxes will be prepared by a tax Professional. Tom & Karen Gargiulo are Enrolled to Practice before the I.R.S. For more informationa about E.A.'s, please go to our website www.nationalincometax.com.

Personalized

You will receive a personalized appointment in a private office. No waiting. No impersonal cubicles.

Reasonable

Our pricing is affordable and often less than our competitors. Call for a quote.

Tax Preparation

- Individuals
- Sole Proprietors
- Partnerships
- Corporations
- Estates
- Trusts



**\$ 10.00 Off
Tax Preparation**
new clients only

**Free E-Filing
\$ 40.00 Values**
with tax prep

**\$ 25.00 Off
Business Tax Prep**
new clients only

**Refund
Anticipation Loans**
from **\$ 89.00**

Conveniently located at
2952 66th St N

Call for an appointment
345-7790

www.nationalincometax.com



KC Jones Broker-Vice President

Realty Executives Cell: 727-458-5263
4020 Park St. N Business: 727-347-1000
St. Petersburg, FL. 33709 Fax: 727-345-6969



Sunset Beach
Walk to the beach from this historical cottage. Completely updated 2 bedroom 2 bath with 1548 htd. Sf. Beautiful heart pine throughout. Large deck to view the Sunsets. **\$775,000.00**

Will the Bubble burst soon?

That's the question most people are asking. The National Association of Realtors' Chief economist, Dr. David Lereah recently spoke to this subject. According to Dr. Lereah "The 82 million citizens that comprise the nation's Baby



New Listings

West of Park
2 br 2 bath with 1644 htd. Sf. Completely updated with new kitchen, tile, windows, fixtures, and more. **\$425,000.00**

Boom Generation are dominating the market, and fueling the housing boom through second and third home purchases." He feels that the fundamentals supporting this real estate market are still very strong, and most local balloons will deflate rather than pop. However, a strong run up in home prices, coupled with an economic recession, local job losses lasting several years, a sharp rise in properties on the market, and investors leaving the

market, could effect our local values. But in spite of all these variables, there has not been a national real estate price decline since the 1930's.

Sold Properties in the Jungle since June 24, 2005

Address	Bedrooms/Ba	Square footage	listed price	Days on Market
3498 79 Way N.	2/1	726	\$118,500.00	29
3450 72 St. N.	2/1	768	\$125,000.00	1
6740 38 Ave N.	2/2	1195	\$154,900.00	32
3308 Boca Ciega N.	3/1/5	1212	\$169,000.00	13
6724 36 Ave N.	2/1	975	\$179,000.00	7
3390 66 Way N.	3/2	1552	\$189,000.00	1
8032 38 Ave N.	3/2	1484	\$200,000.00	21
8112 24 Ave N.	3/2	1266	\$219,000.00	95
8012 26 Ave N.	3/2	1480	\$244,900.00	23
8261 29 Ave	3/2	1594	\$274,900.00	103
8000 31 Ave N.	3/2	1897	\$279,000.00	61
8110 27 Ave N.	3/2	1820	\$299,000.00	80
8245 26 Ave N.	3/2.5	2564	\$449,000.00	27

There were 13 properties that sold in June to date.

The average price per square foot was \$151.28 and the average selling price is \$215,700 with an average of 1426 heated square feet.

The sold prices have not been included to protect the privacy of the Buyers. Please call for additional information. The information sited in this ad is obtained from the MLS system, Realtors, owners, and the public records. The properties have been listed and sold by various participants in the MLS System.

Realty Executives your Local Real Estate Company
347-1000 Ext. 218



Megatrends in Crime: St. Petersburg is falling behind

An Editorial By **Steve Plice**

MEGATREND: An economic, technological, demographic, political, or cultural large-scale phenomenon or force that appears to possess long-term staying power. The term "Megatrend" was first coined by the futurist, John Naisbitt in his 1982 book entitled Megatrends.

Nation-wide, annual crime rates have been steadily and dramatically declining since the late 1980s. This long-term reduction is a "megatrend" that has changed standards and thinking throughout the country. Community standards for "acceptable" levels of crime have declined along with crime rates. Crime rates that might have been considered "acceptable" or "normal" in 1990 are now considered to be unacceptably high.

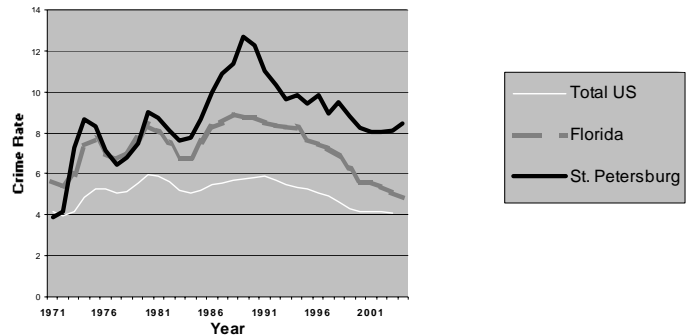
Consistent with the national "megatrend", St. Petersburg enjoyed crime rate reductions throughout the decade of the 1990s. Since the year 2000, however, we have made no progress at all. By not improving, we are falling behind. ***If current trends continue, St. Petersburg will have the Florida's highest crime rate by the year 2006.***

The problem is *not* that St. Petersburg is experiencing a new crime wave. In fact, our crime rates have declined dramatically from the dizzying heights of 1990, and they have been fairly stable since 1999. The problem is that everyone else has shown impressive improvements over the past five years while we have remained largely unchanged. We are being left behind as the rest of our nation, state and county find new and improved ways to reduce crime. As of 2004, even Miami has a lower crime rate than St. Petersburg.

CONA and the citizens of St. Petersburg are far ahead of our City leaders. We grasp that new national norms have emerged from the

"megatrend" of significantly lower crime rates, and we understand that St. Petersburg is falling behind. We believe it is reasonable to expect our city to do at least as well as other cities in Florida and across the nation.

UCR Crime Rates 1971 - 2004



By contrast, our Police and City leaders appear to be stuck in the past. They continue to use the 1990 "spike" in City crime rates as a basis for arguing that we are doing well from an historical perspective. In many ways, our city is in denial. As the rest of the county, state and country continue to improve, our leaders, at least by their actions, signal their belief that our crime rates are good enough. Neither the Police

The Evolution of Diagnostics

For the past 35 years, St. Petersburg General Hospital has pursued the latest in medical advances to improve and save lives. Our DISCOVERY LIGHT SPEED PET/CT SCANNER enables us to deliver a higher standard of care than ever before to the people of our region.

The dual-image system empowers physicians to detect, diagnose and treat cancer faster and more precisely for better outcomes. And that is good news for everybody. Ask your physician, or call us with questions about this new technology, now at St. Petersburg General Hospital. Our brochure will clearly explain the



benefits of this one-step PET/CT diagnostic system over its ancestors.
 >Fuses the finest of PET and CT scan technology

- >Diagnostic tests that previously took weeks can now take an hour or less
- >High-resolution images are electronically transferred to specialists for fast review and expert opinion
- >Elimination of multiple tests saves time and anxiety
- >Images mesh perfectly since patient remains in one position
- >Faster diagnosis and more precise treatment for better outcomes

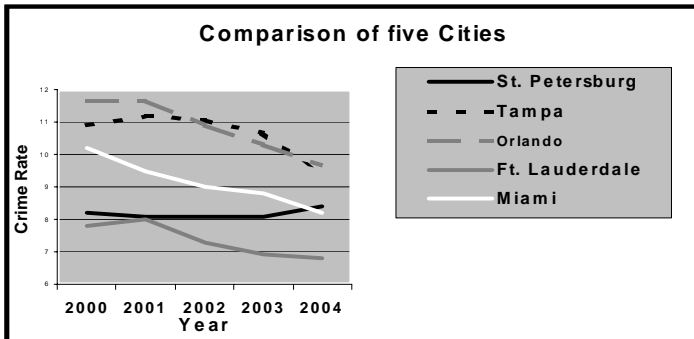
**ONE APPOINTMENT.
 ONE TEST.
 ONE PLACE.
 CALL 341-4077.**



Department "brass" nor our elected officials have put forth a plan for our city to keep up with the clear megatrend sweeping the country. From the rhetoric, I am unable to identify a single elected official who believes that crime reduction should be a priority for St. Petersburg.

It is difficult to believe that anyone at City Hall is actually paying attention. As City Council strenuously debates the need for more Community Police Officers, the City's own website demonstrates how we are losing out to other cities in Florida. (see <http://www.stpete.org/performance/police1.pdf>)

For comparison purposes, the City has chosen to track crime rates in Tampa, Ft. Lauderdale, Miami and Orlando as well as St. Petersburg. In 1999, when the comparison started, St. Petersburg had a crime rate lower than any of the other four cities. In 2000, Ft. Lauderdale achieved a crime rate lower than ours and has continued to show impressive improvements. In 2004, Miami also dipped below St. Petersburg. Of the five cities in the comparison, St. Petersburg is unique in that its crime rate is not declining. Everyone else is enjoying dramatic improvements. If the current trends continue, Tampa and Orlando will be lower than St. Petersburg by 2006.



Crime rates in St. Petersburg are defying the national megatrend. As we stagnate, the U.S., the State of Florida and Pinellas County continue to show annual improvements. Year by year, we fall further behind.

Over the years, our elected officials have been good about providing everything the Police Department has requested. They have allocated more manpower, increased pay, and added substantial benefits. The Police Department has all of the tools it has requested from City Hall. Our elected officials have not, however, demanded better results from the Police Department. This lack of leadership from our leaders is the primary reason that our results are not as good as those of other communities.

The citizens of St. Petersburg need to speak up. We need to tell our Council Members that St. Petersburg is better than this. We deserve better than this. This is the 21st Century. Times have changed and standards have changed. ***

(Continued from page 2)

ing more CPO's in the City. Also the Land Development Regulations, which has been a long, on-going project, that addresses codes and zoning and qualifications for variances.

Tom Killian then discussed the monument project (for the industrial park), which has been made possible through a neighborhood grant through the City. He advised the monument located at 22nd Avenue North and Anvil is complete with three more in process. (See picture on page 14)

The meeting was adjourned at 7:55 p.m.

MAIL BOX EXPRESS

3993 Tyrone Blvd., #608
At Walmart Plaza

A DHL

St. Petersburg, FL. 33709



Mon - Fri, 9 a.m. - 5:00 p.m.
Sat 9 a.m. - 3 p.m.

Authorized Shipper

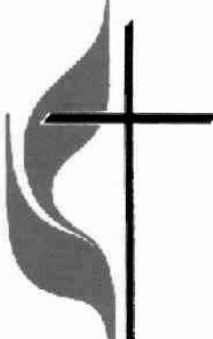
Phone (727) 384-2811

Fax (727) 384-2712

*For all your packaging
Office & Small Business Needs.*

Coupon
15% Off Your first Shipment

On the first day of school, a first-grader handed his teacher a Note from his mother. The note read, "The opinions expressed by this child are not necessarily those of his parents."



Christ United Methodist Church
467 First Avenue North
St. Petersburg, FL 33701
727-833-3343
E-mail: cumcsp@cumcsp.org
Website: cumc.happychurches.com
Traditional Worship: 8:30 am
Contemporary Worship: 9:00 am
Celebrative Worship: 10:45 am

Pastor: Rev. Tom Norton, Jr.



Science Center
Of Pinellas County, Inc.
7701 22nd Avenue North, St. Petersburg 33710
Phone: (727) 384-0027
www.sciencecenterofpinellas.com
Monday-Friday 9 a.m.-4 p.m., Saturday 10 a.m.-4 p.m.
Saturdays \$5/Person, Special Shows & Exhibits
for the whole family!
Classes & Workshops for Pre-K through 12th Grade!



**West St. Petersburg
Community Library News**

Teen Programs

Teen Scene, Every Thursday
6:30pm - 8pm

Adult Programs

Book Discussions, Always call for time
and date (727-341-7199)

Children's Programs

Mother Goose : (infants - 3 years) Tues. and Wed. 11:00am
Preschool Story Time: (ages 3-5) Tues. and Wed. 10:00am
"Family Storytelling Night" 1st Thursday of every month at 7:00.
We tell stories for all ages and do a related craft.

Mother / Daughter Book Club

3rd Thursday of every month. Girls 8-12 and Moms
read a book, discuss it and have snacks and make a craft.

We will have 3 "Special Events" all on Mondays:
June 13th "Guide Dogs", June 27th "Wonders of Nature" and July
11th "Magic Book" a Magic show.



West St. Petersburg Community Library

727-341-7199
750 66th ST. North
St Petersburg, FL. 33710
Monday - Thursday 7:30 a.m. to 9:00 p.m.
Friday - 7:30 a.m. to 4:00 p.m.
Saturday - 10:00 a.m. to 5:00 p.m.
(reduced hours when classes not in session)



by Donarita Vocca

**Walter Fuller Center News
(727) 893 - 7443**

Monthly Fee Classes

Children

	Day	Start Time	Cost (per month)
Basketball, Instructional	Sat	11:00am	\$20
Baton	Wed	5:30pm	\$19
Cheerleading	Thurs	4:00pm	\$16
Gymnastics	Thurs	4:45pm	\$15
Tae Kwon Do	Mon & Wed	5:30pm	\$35

Adult

Exercise with Rita	Mon & Wed	6:30pm	\$12
Tae Kwon Do	Mon & Wed	6:30pm	\$35
Yoga	Tues & Thurs	6:30pm	\$32

Walter Fuller Pool

Currently the pool is open to the public Monday-Friday 9:00am-12:00pm. Admission to the pool during these times is \$2.50 for adults and \$2.00 for children. Expanded summer hours will begin on Monday, May 16th.

Swim to Stay Fit & Masters hours are Monday- Friday 7:00am-9:00am and 12:00pm-1:00pm. For more information please call the pool at 893-7636.



by Brad Rice



Mary Beth Jones

Acupuncture Physician

**Acupuncture * Herbs
And Healing Arts**

Classical Medicine Building
1432 Dr. Martin Luther King Jr St N
St. Petersburg, FL. 33704
727.821.7771
727.821.6914 (fax)
info@classicalmedicine.net
www.classicalmedicine.net



**Steve's WINDOWS
& DOORS, Inc.**

727-545-4701

JOHN KANTASKAS

6720 46th Ave. North, St. Petersburg, FL 33709
State Cert CBC-047793



Mark Pelham

Store Director

ALBERTSONS INC. 3900 66TH. STREET NORTH
SAINT PETERSBURG, FLORIDA 33709

727-381-4312 FAX 727-381-6324

ELECTRONIC FILING
REFUND LOANS IN 24 HRS.

TAX RETURNS FROM
INVOICES & RECEIPTS



THE TAX GUY, INC.

Guy Bickerstaff, E.A.
(727) 343-1398
(727) 521-2765

CELL (727) 418-6488
2401 72ND ST. N.
ST PETERSBURG, FL 33710

FAX (727) 343-1398
BOOKKEEPING &
INCORPORATIONS



The Science Center

Super Saturdays:

- ◆ **August 6-Beaks, Bills and Feathers-**
Featuring the Suncoast Seabird Sanctuary.
10-4, \$5 per person. Have your picture taken
with a bird or Science Center animal for just another \$5.
- ◆ **Sept. 10- Strange But True!** Optical
illusions, glowing minerals and the fun of
Physics.
- ◆ **Oct. 1-Our Oceans and Marine Life**
featuring our 600-gallon marine touch tank.



The Science Center is a unique learning environment for children through adults that offers hands-on educational activities to promote the understanding of science. Over 70,000 visitors of all ages take part each year in special programs, lectures, exhibits and events!

New Hours...

Come visit the Science Center this summer. From now until the end of July we will be open to the public on Saturdays from 10 a.m. until 4 p.m. Enjoy Planetarium shows at 11:30 and 2:30, see a Laser Show at 1:30 or a Gator Feeding at 2:00. Self-guided tours of the Center including the 600 gallon Marine Touch Tank, the animal room and the Indian Village are also available. Check our Web Site (below) for days and hours August through May.

Admission: \$5 / Person includes all shows, exhibits & special programs. The gift shop is open during the hours above. Also, Gift Certificates for Super Saturdays and Memberships are available. Please look in the paper and check our Web Site.

Calling All Volunteers:

Want to have a fun experience "behind the scenes" at the Science Center? Whether you like to work with animals, prefer office activities, or want to meet and greet people we have an opportunity for you! Join our team today. We offer flexible time commitment, training, lots of fun and a recognition program. Call Michelle at 727 384-0027 to find out more!

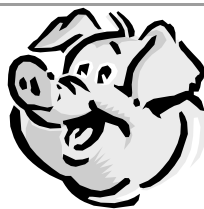
What have you been missing?

- | | |
|---|---------------------------------|
| Fall, Spring & Summer Workshops | |
| Customized Birthday Parties | |
| Presentations for Girl & Boy Scouts. | •Live Animal Room. |
| Monthly Evening Events for Families | •Fun Laser Shows |
| 16th Century Indian Village | •Fun Festivals |
| African American Inventions Exhibit. | •600-Gallon Marine Touch Tank . |
| Spirit of Columbia Theater & Planetarium. | |

www.sciencecenterofpinellas.com
by Marie Stempinski

Wife v/s Husband!

A couple drove down a country road for several miles, not saying a word. An earlier discussion had led to an argument and neither of them wanted to concede their position. As they passed a barnyard of mules, goats, and pigs, the husband asked sarcastically, "Relatives of yours?" "Yep," the wife replied, "in-laws."



Don Can Fix It!

Yes he can!

**Home Maintenance
and Repairs**

**From Furniture Assembly
to Hauling; from
Pressure Washing to
Yard Work - Let us whittle
down your "Honey Do" List**

Need it fixed? Give us a call!



Phone: 727-688-3946
Email: info@doncanfixit.com
On the web at: www.doncanfixit.com

Don Rogers
a Jungle Terrace Resident

If a woman has to choose between catching a fly ball and saving an infant's life, she will choose to save the infant's life without even considering if there is a man on base. – Dave Barry

Serenity Pools, Inc

Specializing in Quality Remodels
and New Construction



Kim Bingham
(727) 224-9961

Office: (727) 345-8996
Fax: (727) 343-2295

Rick & Kim Bingham
Owners/Operators
State Lic. #CPC1456564



Life, Annuities,
LTC, Health
Return on Premium Life

John G. Conklin
Consultant

Laake Financial Services, Inc.

1070 Kapp Drive • Clearwater, FL 33765

Phone: 727-443-4571 ext. 213
Fax: 727-447-2405
E-Mail: johnglenn36@hotmail.com

Serving All
Insurance
Needs



Pinellas Trail entrance improved.

By: **Tom Killian**

The Jungle Terrace Civic Association asked our County Commissioner Ken Welch for his help in making the 74th. Street N. trail entrance more accessible and safer for our citizens. The north side entrance to 74th. Street N. had a steep drop and was overgrown. To improve safety a 40' long, 4' in diameter plastic pipe was put in the

culvert so that water could flow through. The pipe was covered with dirt and sodded to keep the dirt from washing away. Better drainage on 74th. Street N. should also result from the new entrance because the street gutter's were scraped of sand and debris. We now have a nice sloped entrance to the trail for all our citizens to enter safely.

Jungle Terrace wants to thank Commissioner **Ken Welch** and his people for improving our trail entrance. ***

Wagonwheel Flea Market



Midway Between St. Petersburg & Clearwater
1500 RENTAL BOOTHS 1000 UNDER COVER
Open All Day Saturday and Sunday

DAVID HUNTLEY, Manager

7801 Park Blvd.
Pinellas Park, Florida 33781

(Anyone Can Sell)
Phone (727) 544-5319

Art Stone
COMPANY INC.

Orchids



MICHAEL J. POLEN
PAULA J. POLEN
Seedlings to Blooming
All Potting Supplies

3611 Tyrone Blvd.
St. Petersburg
Florida 33710
(813) 345-6733

SAFFRON'S

AT HISTORIC JUNGLE PRADA

Caribbean Cuisine

- FINE DINING
- OUTDOOR DINING
- EXPRESS CATERING
- BANQUET FACILITIES
- TAKE OUT

1700 PARK STREET N.
ST. PETERSBURG, FL 33710
727-345-6400

MON-THURS 11AM-9:30PM
FRI & SAT 11AM-10PM
SUN 2PM-10PM • BRUNCH 11AM-2PM

There is always something happening at Saffron's!

WWW.SAFFRONSCUISINE.COM

Sponsors Needed!

If you live in the Jungle Terrace neighborhood and own a local business, we need your help to sponsor your neighborhood newsletter, the official monthly publication of the Jungle Terrace Civic Association.

Our rates are reasonable and our newsletter reaches people in your area that can purchase your service.

Business Card Size ad	\$45.00 a year
¼ Page Ad	\$115.00 a year
½ Page Ad	\$225.00 a year
Full Page Ad	\$450.00 a year

You supply full page (8.5 x 11) insert
.....\$30.00 for one month

Please call Tom Killian, 343-2041, and I will be glad to tell you how our newsletter can help you increase your business.

This Months Gardening Tips

by Dean Miner, President Floridian Pest & Turf
(see ad at right)

LAWN GRASS...

The Carpet Outside Your Home

There is one subject that is a common denominator when gardeners begin talking about their home grounds. It is LAWN GRASS.

The majority of people that move to Florida are totally confused about the grass that is planted around their home. Yes, it looks like straw, crabgrass or rope blades. I must tell you, it is the best we have and in reality it can be managed. You are probably familiar with bent, fescue or even bluegrass that was used for the northern lawn. Unfortunately, it will be necessary to erase those fond memories and get down to the business of trying to grow Florida grass. It will be difficult to say the least and probably more confusing than any other part of gardening in this sub-tropical climate.

There are some pertinent points to remember.

- ◆ Seek out the best advice possible.
- ◆ Don't listen to your neighbors suggestions.
- ◆ Identify the type of grass you have.
- ◆ Determine how much time you want to spend on your lawn
- ◆ Obtain accurate and proven information.

If you want the greenest lawn in the neighborhood, it will be necessary to exert a lot of effort on the grass. Should you want a grass like that in the north, then prepare to spend more money than it would require to have the standard lawn laid by sod dealers.

The most expensive lawn grass is Bermuda. It is the same grass that golf courses use on the greens and fairways. It is beautiful but expensive to maintain.

Two grasses are used for lawns in Florida. They are St. Augustine and Bahia. Three others, on occasion, are planted. Centipede in the northern part of the state, zoysia, and Bermuda in all areas.

Yes, they all require a certain amount of fertilizer and pest control and these two requirements are similar. The major differences are in their tolerance to shade, salt, mowing heights and rate of establishment.

ST. AUGUSTINE – STENOTAPHRUM SECCUNDATUM

There are some advantages and disadvantages to St. Augustine. It is fast growing, will grow on many types of soil, does exceptionally well in full sun, and produces an acceptable lawn in a short period of time. Most of the cultivars respond quickly to fertilizer.

All but one cultivar is coarse texture (large blades and stolons). Irrigation is a prerequisite for a quality lawn. None of the cultivars have good wear qualities (if you walk across an area every day, there will be dead grass). Rabbits love the grass and will eat it into the ground, if there are high populations. However, it is not a common problem in most areas. Chinch bugs find most cultivars very palatable, and sod worms can destroy a lawn in two weeks if not controlled. Nematodes attack the roots and some cultivars are not cold hardy. What the heck? Why plant this type of lawn?

What is the reason for planting St. Augustine? It is probably the best we have at the present time. There is no perfect grass for Florida.

- **Floritam.** Without this introduction of St. Augustine, there would be fewer good lawns. It is the most widely planted. Introduced in 1973, by the Florida Agriculture Experiment Station, it quickly became popular because of its resistance to chinch bugs. The grass is also resistant to a virus disease called St. Augustine decline (SAD). Flo-

(Continued on page 13)



“Call Us & Relax” 

FLORIDIAN

PEST & TURF MANAGEMENT, INC.

(800) 799-2407
(727) 344-2407

Free Inspection & Estimates

Pest Control Specialists

Once a Year Programs
Termite Bait Systems
Ant Control • Wildlife Control




www.flbugs.com

Notice in a farmer's field:

THE FARMER ALLOWS WALKERS TO CROSS THE FIELD FOR FREE, BUT THE BULL CHARGES.

Heather Pillion
Janice Kaplan
Owners



Bath & Biscuit
Pet Boutique, LLC

- Grooming
- Barkery
- Natural Pet Product & Supplies

tel. 727.345.8118
e-mail: bathandbiscuit@verizon.net
6798 Crosswinds Dr. N., Suite C-108 St. Petersburg, FL 33710 **Vet Recommended**



ST. PETE PLUMBING
“We Work Miracles!”
CFC051641

Proud member of 

The Plumber that offers you a choice!
Call us today and
EXPERIENCE THE DIFFERENCE
Water heaters - Water Conditioners
Water filters - Remodeling
Six months same as cash
(727) 526-7600
www.stpeteplumbing.com





TYRONE SQUARE REDEVELOPEMENT UPDATE

BONEFISH GRILL AND LEE ROY SELMON'S LAND AT TYRONE SQUARE

- Part of Lifestyle Component to be Finished by Year-End -

ST. PETERSBURG, FL (July 14, 2005) – Simon Property Group, Inc. (NYSE:SPG) owner and manager of Tyrone Square announced today that two exciting restaurant concepts, **Bonefish Grill** and **Lee Roy Selmon's**, will come to the mall's new lifestyle component.

Bonefish Grill and **Lee Roy Selmon's** plan to be open in time for the 2005 Holiday Season. The new lifestyle area located between Sears and Macy's, is also scheduled to be complete by the holidays with more innovative retail concepts to be announced soon. The lifestyle component will include an extensive renovation to the exterior of the building to create a streetscape appearance as well as an additional mall entrance.

"We are excited about Lee Roy Selmon's opening in St. Petersburg," says Peter Barli, president of Lee Roy Selmon's. "We look forward to serving our soul-satisfying comfort food wrapped in our heartwarming hospitality. Additionally we welcome the local sports fans to enjoy the environment that we have created for competitive spectator sports action any day of the week – we offer all that a sports fan has come to expect."

"By adding these two great restaurants, we will provide our shoppers with a wonderful dining option," said Jeni Wilson, director of mall marketing at Tyrone Square. "Moreover, the addition of the lifestyle component will enhance all of the offerings at Tyrone Square."

New exterior parking lighting, landscape islands, patio restaurant seating, up-front parking spaces and a pedestrian walkway from Tyrone Boulevard are further enhancements which will update the center's appearance.

Tyrone Square, located at Tyrone Boulevard at 66th Street North and 22nd Avenue North is a super-regional center serving a substantial por-

tion of the Tampa-St. Petersburg-Clearwater metro area. Tyrone Square opened in 1972 and is currently anchored by Dillard's, JCPenney, Macy's and Sears and features more than 170 specialty retailers and eateries. Tyrone Square underwent a mallwide renovation in 1998. An eight-unit food court, Borders Books & Music and Tia's Tex-Mex restaurant were added between 1998 – 2000.

Simon Property Group, Inc., headquartered in Indianapolis, Indiana, is a real estate investment trust engaged in the ownership, development and management of retail real estate, primarily regional malls, Premium Outlet® centers and community/lifestyle centers. The Company's current total market capitalization is approximately \$39 billion. Through its subsidiary partnership, it currently owns or has an interest in 294 properties in the United States containing an aggregate of 201 million square feet of gross leasable area in 40 states plus Puerto Rico. Simon also holds interests in 52 European shopping centers in France, Italy, Poland and Portugal; 5 Premium Outlet centers in Japan; one Premium Outlet center in Mexico; and one shopping center in Canada. Additional Simon Property Group information is available at www.simon.com.

Bonefish Grill is a polished casual seafood restaurant that specializes in market fresh fish prepared over an oak-burning grill. Guests enjoy high-quality seafood served in a comfortable, lively atmosphere at a good value. A selection of signature sauces and featured pairings are offered to complement the flavor of fish. Fine, hand-cut beef and pork tenderloin, as well as pasta and chicken dishes are also available. **Bonefish Grill's** interior is adorned with hand-blown glass lamps, large-scale metal sculptures and mystical fish rubbings to enhance the ambience.

Lee Roy Selmon's is best known for its soul-satisfying comfort food served with heartwarming hospitality. The reoccurring theme throughout the **BBQ Sports** restaurant is a tribute to NFL Hall of Famer and former Tampa Bay Buccaneer **Lee Roy Selmon** - the athlete, the family man and the community leader. The expansive bar which features large screen TVs is a popular destination for the sports enthusiast. ***

Neighborhood Nite at Tropicana Field

By: Tom Killian

CONA Membership Chairman **Tom Killian** congratulates **Phil Whysong** President of the N. Kenwood Association. N. Kenwood had 59 members in attendance, the most of any Association in our city. For bringing the most members Phil was introduced and honored on the playing field. Eleven Neighborhoods attended the festivities with a total of 151 people attending. We had good seats behind home plate, upper deck. Tickets were \$3.00 each. Please plan to attend our 2006 Spring Tropicana Field game. ***



(Continued from page 11)

ratam is not cold hardy, will not grow in heavy shade, and is of coarse texture. It is the preferred grass for sunny areas and is used extensively throughout central and south Florida. The mowing height should be higher than some of the other cultivars. It does produce a heavy thatch under certain conditions.

- **Seville.** Although not perfect, Seville is an attractive, fine bladed grass, dark green in color, very adapted to shade or sun, and can be mowed closer than all the other St. Augustine's. It does produce excessive thatch when over fertilized. Chinch bugs and sod web worms love the grass. A good pest control program is a necessity if this is your lawn. Seville is not tolerant of low temperatures. It could be severely injured during an abnormal winter such as 1983.

One of the prerequisites for a good lawn is an irrigation system. This should be installed prior to the planting of grass by sod or plugs. Although a little on the expensive side, an irrigation system will pay dividends in the form of a quality lawn and less aggravation with hoses. You will save money and conserve water.

How much water do you apply to a lawn that is established? Turf specialists suggest three quarters of one inch to one inch per week. Over watering creates more mowing, thatch and a shallow root system. It also leeches out expensive fertilizer you have applied, and it may contaminate lakes, rivers, streams and even the underground water you drink.

Mowing heights are dependent on the cultivar of St. Augustine planted in the lawn. Usually 3-4 inch heights are recommended. On Seville and Floralawn, these could be reduced 1-2 inches. When do you mow? A schedule of mowing should remove no more grass than the height of grass left. If this is practiced, you will never need to catch you clippings. In fact, it is advisable to leave the clippings as that is the part

that contains much of the nitrogen you have added in the form of fertilizer. The only time clippings will need to be removed is when the grass grows very high between mowings.

Leaving the clippings DOES NOT build up thatch. Over fertilization and over watering builds thatch.

Follow the maintenance and establishment discussed, and you should have a beautiful green carpet around your home. You do not need to be slave to your lawn.

MOLES

Almost everyone has been plagued with this four legged vermit! It ploughs through the soil in your lawn and leaves a trail of ridges that looks like a miniature mountain range.

There are all types of stories on how to control this night time marauder. Some of these suggestions are poisoned peanuts; a hose connected to the exhaust of the car and run into the hole or even place chewing gum in the runs. Let me tell you none of these work. Why?

Moles are insectivores (they eat mole crickets, grubs and earthworms). They do not eat the roots of grass or plants.

The mole has a den down in the soil about two feet. There will be a small pile of soil where the mole has thrown it up to the surface from making the den. During the day it rests in the den. In late evening or early morning it crawls out of the den and forages for food. The mole burns its food at an astonishing rate and must eat a lot of food or it will starve to death.

The best method of eliminating the mole is to trap it. Traps are available from garden centers or hardware stores. Locate the den, and then set a trap in a run close to it. There may be several runs and if at first you don't succeed, try another one. Ultimately you will be successful.

Johnny Leverock's St. Pete Beach

We would like to thank the local community for 20 years of support at this location.

We are still serving all of the great recipes that the Leverock Family taught us in 1980.

We have stuck with the basic principles that Johnny Leverock had in 1948.

- Fresh Local Fish • Famous Clam Chowder •
 - Delicious homemade Pies •
- like our Peanut Butter or Key Lime Pies all made right in our kitchen.*



Sincerely,
George Lewis, John Stross & Vanessa Parnell
 Owners Since 1984

P.S. ~ Don't forget our Sweeping Water Views!

🐟 10 Corey Avenue, St. Pete Beach 🐟 727-367-4588 🐟





Anvil St. N. & 22 Ave. N. By: Tom Killian
The first of four monuments for the Tyrone Industrial Park has been completed. This monument is located in front of Rex Electronics. Please stop by and see the fine craftsmanship by the builder.

TYRONE FAMILY RESTAURANT

7815 38th Avenue North, St. Pete., FL 33710
 727-343-0704

"A neighborhood place to eat since 1964"

OPEN 7 DAYS A WEEK

Sunday: 7am - 1pm (breakfast only)
 Mon & Tue: 7am - 2pm (brkfst & lunch)
 Wed thru Sat: 7am - 9pm (brkfst, lunch & dinner)

Eggs - Omelettes - Pancakes - Soup - Salads
 Sandwiches - Clubs - Burgers - Subs
 Pasta - Pizza - Chicken - Seafood
Something For Everyone !!

FREE COFFEE

with this coupon & purchase of any regular priced breakfast of \$3.25 or more. Not valid with any other discount. Coupon good for entire party. Limit one coupon per day. Valid: Mon - Fri 7am - 11am Expires: 09/30/2005

BUY ONE GET ONE FREE

Buy one dinner at regular menu price and get the second dinner free, of equal or lesser value, up to \$9.95, with the purchase of 2 drinks. Wednesday thru Saturday, 4pm-9pm. Dine in only. Not valid with any other discount or specials. Expires: 09/30/2005

WANTED
NEWSLETTER
EDITOR

We will need a newsletter editor for next year.
 Put your creative powers to work! Hone a skill that has value in the workplace! Some basic PC skills required. Expert help and assistance available. Get involved in your neighborhood.
 Contact Tom Killian, JTCA President. **343-2041**

Gruskin & LaBerge, P.A.

ELDER LAW

- Medicaid asset protection and applications
- Power of attorney
- Living wills/Health care surrogates
- Estate and Probate matters

2719 First Avenue North
 St. Petersburg, FL 33713
 Phone: 727-321-1918

CONSUMER LAW

- Lemon law
- Rebuilt wrecks
- Car sales fraud
- Credit report errors
- Dealer fraud

FAMILY LAW

- Divorce
- Child custody and visitation
- Child support
- Paternity



David Gruskin Suzanne LaBerge

E-Mail: David.Gruskin@verizon.net
 www.gruskinandlaberge.com



Jungle Terrace Web Site

We have a web site for the Jungle Terrace Civic Association. It is at URL www.JungleTerrace.org. It is available for viewing to anyone that has internet access. The web site has important organizational information, a Neighborhood map, the soft-copy Newsletter and much more. The Newsletter and map are in PDF format. If you don't have the Adobe PDF reader you can download it free at www.adobe.com Look for this button



Questions contact Webmaster Bob Miller at BluegrassBob@earthlink.net

The Jungle Terrace Internet Discussion List

Jungle Terrace has an Internet discussion list that is available to all neighborhood residents free. If you have a computer you can join. Learn what is happening today. Don't wait until the next meeting or until you receive your next newsletter. When you sign onto the list, you can then participate in discussions concerning things that are important to our neighborhood. Help us solve problems and make our neighborhood the best in the city. To join the list, send an e-mail to Steve Plice at steveplice@verizon.net



"When the pin is pulled, Mr. Grenade is not our friend."
--US Army

Mountain Memories

Traditional Bluegrass Music



Pete Lissman Guitar (727) 536-8508

Bob Miller Banjo (727) 343-4436

E-mail—Bluegrassbob@earthlink.net

Bluegrass music for all occasions

Repair Service

Free Estimates

Pressure Washer Rental Tools/Equipment Rental

AFFORDABLE MOWERS

Quality Work & Reasonable Prices
(727) 347-3103

Bill Domante, Owner

3800 58th Street North

St. Petersburg, FL 33709



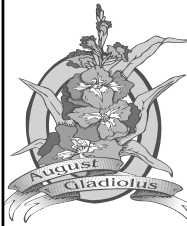
Astrological Sign:

Leo (July 22 - August 22)

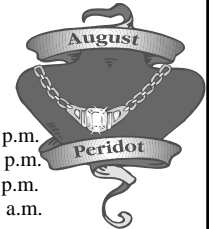
August 2005

Virgo (August 22 - September 22)

1st Civic Holiday
6th Summer midpoint



● New Moon	4th	10:05 p.m.
☾ First Quarter	12th	9:39 p.m.
☽ Full Moon	19th	12:53 p.m.
☾ Last Quarter	26th	10:18 a.m.



Astrological Sign:

Virgo (August 22 - Sept 22)

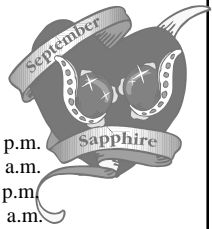
September 2005

Libra (Sept 22 - Oct 22)

5th Labor Day
11th Patriot Day
22nd Autumn Begins



● New Moon	3rd	1:45 p.m.
☾ First Quarter	11th	6:37 a.m.
☽ Full Moon	17th	9:01 p.m.
☾ Last Quarter	25th	1:41 a.m.



Outside a secondhand shop :

WE EXCHANGE ANYTHING - BICYCLES, WASHING MACHINES, ETC. WHY NOT BRING YOUR WIFE ALONG AND GET A WONDERFUL BARGAIN?

KR FRITZ

- Designs & Drafting
- Residential Addition & Renovation Construction Plans
- Ready to Permit & Build
- Ideal for Homeowner Contractor or Outside Contractor
- Construction Consulting

384-4331

Mention this ad for a \$50 Discount



RAHEB Family Chiropractic

Dr. Jeffrey Raheb

Chiropractor

Wellness • Injury • Accident



Se Habla Español
Children • Medicare

6701 - 38th Avenue N., Suite B-1
St. Petersburg, FL 33710

Office: (727) 381-3456 • Cell: (727) 692-0643 • Fax: (727) 381-3762

"Chiropractic Is # 1 Choice For Children!"

Did you know that chiropractic is the most frequently utilized holistic health care choice for America's children today? According to a recent study in the Journal of Pediatrics, 51% of the children who sought chiropractic care were seen for relief of respiratory or ear, nose and throat symptoms, 15% had musculoskeletal complaints, 12% were experiencing gastrointestinal or skin problems, 6% had allergy complications, and another 5% sought care for prevention of illnesses." 1

The Journal's findings also found that the more education the mothers received, the more likely they were to choose holistic health care such as chiropractic. Many of the parents reported dissatisfaction with the results of traditional providers and were wary of the side effects that prescription and over-the-counter drugs might have on their children. They also believed chiropractic was a much healthier choice for their kids not just when they were sick but to help them stay healthy as well.

It's important that newborns have their spines examined immediately after birth and through every stage of life-when they begin to raise their head, learn to crawl and walk. Active kids, who are riding bikes, playing sports, and carting around heavy backpacks all day should have their spines checked regularly to ensure good health. Adjustments for athletic children are essential to maintaining good health and ensures that their spines grow correctly and in proper alignment.

According to the U.S. Consumer Product Safety Commission, four million children under the age of fourteen were treated in emergency rooms in 1994 for sports related injuries and another 8 million were seen by their family physicians.2 Of those children who participated in sports, girls were injured at the rate of 20 per 100, and boys recorded an injury rate of 39 per 100.3

The most dangerous sport for children was baseball, which had the highest fatality rate of any other sport and the least mandated safety equipment rules. Emergency rooms across the U.S. say they treated nearly half a million children for soccer or basketball related injuries in 1994, 32,000 for hockey related injuries and another 30,000 with injuries sustained in gymnastics.4

Millions more children suffer from spinal injuries, known as subluxations, that are never examined or identified and can cause severe health problems. Educated parents everywhere are choosing to provide pro active health and wellness chiropractic care, in addition to disease and pain treatment which is necessary to ensure the healthy growth and development of their children. They would rather invest their resources in wellness care whether symptoms are present or not. Parents know that chiropractic adjustments are gentle and safe, and will:

- Ensure proper nerve supply, chemical balance and life energy to their child's nerves, organs and systems.

DIMMITT



LUXURY MOTORCARS

Randy Hughes
Sales Manager

25191 U.S. Hwy. 19 North
Clearwater, FL. 33763

Phone: 727.797.7070

Facsimile: 727.726.3781

Cellular: 727.647.2366

Toll Free: 800.407.6557

E-mail: randy@dimmitt.com

www.dimmitt.com



Errands

Cleaning

"A Pair of Helping Hands"

Personal Assistants
For your every need

- Pet Sitting
- Doctor Visits
- Vet Visits
- Pack & Unpack for movers

- House Sitting
- General Shopping
- Organize Closet / Kitchen
- Party help - serve, bartend



Vicky Sweitzer
727-545-8968

Georganna Young
727-397-8247

- Remove trauma to the spine and neck caused by childbirth or other activities related to being an active child.
- Ensure that their child's spine grows in proper alignment through every stage of growth and development.

It's no wonder that chiropractors have become the family doctors for millions of families around the world. Shouldn't you give your children the chance to be as healthy as they are designed to be!

1. Journal of Pediatrics, 1993.
2. U.S. Consumer Product Safety Comm.
3. Nat'l Youth Sports Foundation, 1994
4. Nat'l Safety Kids Campaign study, 1994

"Tracers work both ways." --US Army Ordnance



August Home of the Month

by Mary Scott

Recognizing the beauty the KEENAN FAMILY have bestowed upon their home is easy for everyone to see who drives by but most notably to their neighbors who nominated them.

Pat & Cheryl have completely renovated their home at 3067 66th Way North over the past 5 years and can now enjoy the fruits of their labor. They, along with their three children, can be found splashing in the cool waters of their new pool. Congratulations and thank you Keenan Family for such a beautiful masterpiece!

If you have, or know of a property that you would like to have nominated as Home of the Month, please call 384-1718.



great beginning nail and hair designs

4101 5TH AVENUE NORTH
ST. PETERSBURG, FLORIDA 33713
TELEPHONE 327-1785

Specializing in:

- Japanese Straightening
- Haircuts
- Highlights
- Color

First initial visit - Free haircut with one step color



Discovery Learning Center At PARC

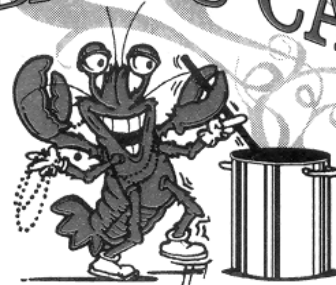
Dedicated to the care and education of children of all abilities since 1953

Credentialed Teachers / Experienced staff
Nurse on staff • Small Classes • Computer Lab
Toilet Training • Independent self-care skills • Socialization
Trained to work with special needs
On-site therapy (PT, OT, Speech)
Community-funded tuition for those who qualify
Ask about our FREE developmental screenings and in-home early intervention service

M-F 7am - 6pm
Lic. #C680083
We accept CCC
Infants to 5 yrs

Quality Child Care / Early Intervention / Pre-K
3100 75th St. N. 727-345-9111
www.discoverylearning.org

BAYOU CATERING



**DAVID
BILYEU**

813-833-3508

**Specializing In Louisiana Creations
Complete Meal Planning, Estimates
Delivery, Setup, Serving, Cleanup
Onsite/Offsite Cooking
Corporate Functions
Dinner /Holiday Parties**

Newsletter Articles

Do you have a letter, issue, article, or recipe you would like to publish in the JTCA newsletter? We welcome letters, comments, and contributions from our neighbors.

We would like to invite you to create articles that will inform our neighbors about items of interest relating to our neighborhood. Some suggested subjects are Pinellas Trail, Tyrone Corridor, Tyrone Square Mall, the Dog Park, Pool and Tennis Courts, Soccer League, Azalea Little League, Walter Fuller Park, the Devil Rays Complex, History of Abacrombie Park, our Linear Park 30th. Ave. N., the two schools in our area, Walter Fuller Center after renovations, Mobile home park on 34th. Ave, recipes, etc.

Photos are welcome. We can also take photos for your article. Articles and photos can be in soft-copy (preferred) or hard copy.

Send to; Bob Miller 8215 30th Ave N 343-4436

BluegrassBob@Earthlink.net

Article and Advertising Acceptance Policy

Articles will not be accepted which in any way is considered to be lacking in judicious good taste or moral propriety, or which demeans any particular race, language, religion, or political view. Articles of a controversial political nature will not be accepted. Advertising of a controversial political nature will not be accepted. Advertising found to contravene truth, exaggerate the description of a product or service, or containing fraudulent statements will not be accepted. Advertising is accepted with the conditional understanding that the sponsoring company and principal beneficiary of the advertisement is ultimately responsible and liable for its content. We reserve the right to reject or revise all copy submitted, or to cancel advertising at any time.

Important Phone Numbers

Emergencies	911
Rich Hladik, Community Policing Officer	892-5952
Police (non-emergency)	893-7780
(CASA)	898-3671
City Council Office	893-7177
Codes (get a case number)	893-7373
Elderly Information	893-7101
Garbage Collection Inf.	893-7334
Graffiti	893-7394
Library (Azalea)	893-7930
Mayor's Action Center	893-7111
Mosquito Control	464-7503
PARC (Pinellas Assoc. for Retarded Children)	345-9111
Public Service Rep. (Susan Fuchs)	893-4137
Rodent Control	893-7360
Schools; 74th St. Elementary	893-2120
Azalea Elementary	893-2187
Azalea Middle	893-2606
Street Lights (Progress Energy)	1-800-228-8485
Tip Line	892-5000
Water & Sewer Problems	893-7761
Walter Fuller Center	893-7443
Walter Fuller Pool	893-7636
For a free smoke detector	
Or home inspection	893-7233

CFI MORTGAGE

a Division of CFIC Home Mortgage, Inc.

Correspondent Lender

Your Neighborhood Mortgage Company
Purchase, Refinance, Debt Consolidation

- **Free** pre-approvals
- **No** Discount Points
- **No** Application Fee
- **Low, Low** Rates
- **FHA /VA /Conventional**
- **Programs for Credit Challenged Borrowers**

The One Call Worth Making...

100% Call **Rick Bull**
Financing Available **727-344-0683**



Stylecraft

Window Treatments, Inc.

501 - 9th STREET NORTH
ST. PETERSBURG, FLORIDA 33701-2198
PHONE 894-6858 • FAX 821-5566
TOLL FREE 1-800-758-2759

Armand Theodore Joyal II
Manager

DRAPERIES & BEDSPREADS
VALANCES & TOP TREATMENTS
VERTICAL & HORIZONTAL BLINDS
MICRO & MINI & MID SIZE BLINDS
SHUTTERS & 1" & 2" WOOD BLINDS
DUETTE & CELLULAR SHADES
FABRIC PLEATED SHADES
UPHOLSTERY & WALLPAPER
CARPET & FLOORING
REPAIRS & ALTERATIONS

(727) 344-1604

Extra Closet

100% Air Conditioned Storage

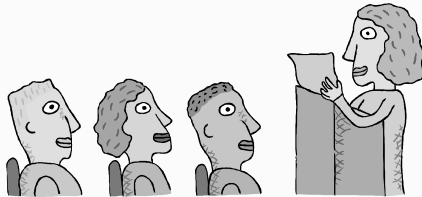
KEN & BOB
Managers

2401 Anvil Street N.
St. Petersburg, FL 33710



Mark Your Calendar 2005 Meeting Dates

January 17
 February 21
 March 21
 April 18
 May 16
 June 20
 July 18
 August 15
 September 19
 October 17
 November 21
 December No Meeting
Social 6:45 P.M.



Meeting 7:00 P.M.

Officers and Board Members

President	Tom Killian	343-2041
Vice President	Ron Russell	345-7000
Secretary	Lyn Dexter	345-7000
Treasurer	Linda Mouriski	381-4845
Board Member	Mary Lou Mitchell	345-4408
Board Member	Bob Miller	343-4436
Board Member	Larry Dosh	343-3070

Committees

	{ BluegrassBob@Earthlink.net }	
Newsletter Editor.....	{ Bob Miller	343-4436 }
Newsletter	Tom Killian	343-2041
Membership	Linda Mouriski	381-4845
Traffic	Ron Russell	345-7000
Home of the month	Mary Scott	384-1718
CONA Report	Steve Plice	344-3120
Welcoming	Tom Killian	343-2041
	{ BluegrassBob@Earthlink.net }	
WebMaster.....	{ Bob Miller	343-4436 }
Meeting Refreshments.....	Tom Killian	343-2041

Advertising Prices

Our rates are reasonable and our newsletter reaches people in your area that can purchase your service.

Business Card Size ad	\$45.00 a year
¼ Page Ad	\$115.00 a year
½ Page Ad	\$225.00 a year
Full Page Ad	\$450.00 a year

You supply full page (8.5 x 11) insert.....\$30.00 for one month
 Please call Tom Killian, 343-2041, and I will be glad to tell you how our newsletter can help you increase your business.

"A slipping gear could let your M203 grenade launcher fire when you least expect it. That would make you quite unpopular in what's left of your unit." --US Army Magazine of Preventive Maintenance



TAXI

(727) 367-3702

www.BatsTaxi.com

Fax 367-8354

P.O. Box 66330 • St. Pete Beach, FL 33736

DAN'S HAULING, INC.

Mary Lombardi / Treasurer
 8110 30th Ave. N., St. Pete, FL 33710
 (727) 341-1135 • Fax (727) 381-1114



WE HAUL ANYTHING!

- Construction Sites
- Demo Work
- Garage Clean-Outs
- Yard Clean-Ups
- Drop Off Service
- 12 Cu Yard
- Same Day Svc.
- Free Estimates



Apple Dental Group



Dr. Phillip Apple
Dr. Richard Edwards
 Periodontist
Dr. Terryl Crawford
 Endodontist

6759 First Avenue South
 St. Petersburg, FL. 33707

727-381-1642 Fax 727-384-0764

Apple Dental Affiliates, PA



**POLICE FIRE
AMBULANCE**



Non-Emergency

893-7780

EMERGENCY

911

St. Petersburg Police

Jungle Terrace Civic Association
Member: Council of Neighborhood Assoc.
2275 80th Street North
St. Petersburg, Florida 33710
E-Mail: tomkillian@juno.com

Forwarding Service Requested

PRSRT STD
U.S. POSTAGE PAID
St. Petersburg, FL
Permit No. 1084

If your gonna make omelets you gotta crack a few eggs" -- Unknown --

1738 28th. St. N., St. Petersburg, FL. 33713

Motorway

**Bad Credit
No Credit...
No Problem!
We will
get you driving.**

**Auto
Sales
&
Locator
(727) 321-2735**

- Full Service Garage
- Military & Senior Citizen discount.
- If we don't have the car you want, we will get it!
- Financing Available

Chung toi noi tieng viet. Cam on!



Bring this ad in and
get a **\$100** discount on
vehicle purchase.

Motorwayautosales@usa.com

COPYRIGHT NOTICE.

Clipart used in articles in this publication is from MS Publisher 2003 and the MS Office Online, Clipart and Media Site.
Copyright © 2003 Microsoft Corporation, One Microsoft Way, Redmond, Washington 98052-6399 U.S.A. All rights reserved.