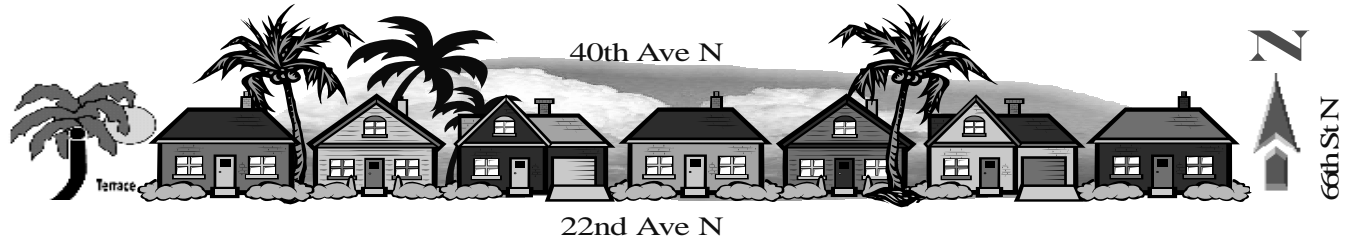


Boca Ciega Bay



Jungle Terrace Civic Association

In this issue

Annual Membership Dues form..3
 Azalea Branch Library News..12
 Committees.....18
 Home of the Month.....17
 Important Phone Numbers....18
 Jungle Terrace Discussion
 List.....15
 Jungle Terrace Web Site....15
 Monthly Meeting Minutes.....2
 Nominating Committee.....18
 Nominations for 2004.....19
 Officers and Board Members..18
 Policing Report.....14
 Sacred Lands.....4
 Science Center News.....13
 Walter Fuller Center News...12

The next JTCA Meeting is scheduled for **Monday, January 19th. Social 6:45PM, Meeting 7:00PM**

The meeting will be held at the newly remodeled Walter Fuller Youth Center, 7891 26th. Ave. N., St. Petersburg.

On the Agenda

- Karl Nurse CONA President
- 2004 Jungle Terrace Elections
- Achievement Awards



Karl Nurse 2004 President of the Council of Neighborhood Associations will be our guest speaker.

Workers begin trail overpass at Tyrone

The bridge over 38th Avenue N should make the Pinellas Trail much safer for pedestrians and cyclists.

By JON WILSON, Times Staff Writer Published December 10, 2003

ST. PETERSBURG - Angling southeast next to Tyrone Boulevard, the Pinellas Trail crosses some of the city's toughest traffic routes, including busy 38th Avenue N.

Florida Department of Transportation crews started work Monday on an overpass across 38th Avenue to make life safer for thousands of pedestrians, cyclists and skaters who use the trail. The \$2.2-million bridge is expected to be finished in late summer or early fall 2004, DOT officials say.

The trail will remain open at 38th Avenue during the project; crews are widening it slightly to accommodate users as work progresses.

Traffic on 38th Avenue will be diverted tempo-

(Continued on page 9)

Article reprint by permission from Jon Wilson

Times art — MICHAEL GUILLÉN

come, trails and linkages would allow users access to the entire county.



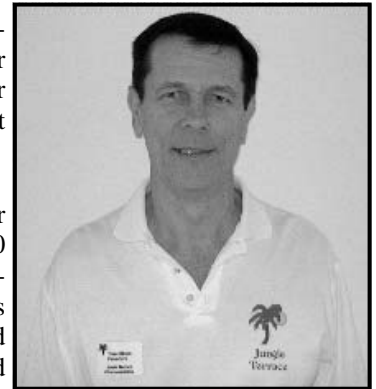
Sherman Smith (L) Legal Counsel St. Petersburg Police Department presents a \$1,000.00 Police Forfeiture Grant check to Jungle Terrace President **Tom Killian**. The December 15th. presenta-

(Continued on page 7)


Annual Membership Dues Due in January page 3

Minutes of the Nov 17, 2003 Monthly Membership Meeting


- President **Tom Killian** called the meeting to order at 7:00PM. Leading us in the pledge to our flag.
- Roll call of officers and board members.
- History of Jungle Terrace, tonight's topics and guest speakers were announced.
- Secretary Linda Sessions presented the newsletter minutes, accepted as read.
- Treasurer **Skip Mitchell** presented the Treasurers report, accepted as read.
- Community Police Officer **Rich Hladik's** column is in the newsletter.
- Our first speaker tonight was **Bob Dillinger** head of the Public Defenders office for Pinellas and Pasco counties. The public defenders job is to see that all people are given a good quality of justice. Their budget is fourteen million dollars each year and their staff consists of 92 lawyers and 110 support people. They handle 74,000 cases each year and are open seven days a week, 365 days each year. There are 3,000 inmates at the county jail at a cost of \$100.00 per day. There are 75,000 people in Florida's State Prison at a cost of \$65.00 per day. Half of the people in prison are mentally ill. The public defenders office has social and mental health workers who work with the mentality ill to find them places to live. They have a drug court with a 80 per cent success rate.
- Our second speaker this evening was Circuit Court Judge **Walt Logan**. There are four circuit judges in Clearwater and four in St. Petersburg. Statewide there are 450 Circuit Judges. The cost per case is \$251.00 due to the high volume of cases. Judge Logan spoke about DNA testing, domestic violence injunctions and gave a very interesting view of how our taxes are used.
- Our Jungle Terrace Picnic is Saturday November 22nd, 11AM to 2PM. 7691 30th. Avenue North.
- **Ed Carlson** head of the 2004 nominating committee introduced all the nominees running for election in 2004. He thanked all committee heads and **Bob Miller** for his contributions to the newsletter and our new web site.
- **Ron Russell** Traffic and Safety Committee Chairman reported 2003 issues. A quiet year and the completion of the Tyrone Blvd. project. Working with our CPO and codes people we have been solving the everyday problems.
- The Central Avenue Christmas Home Tour is December 13, 5:30PM to 8:30PM. Tour starts at 231 72nd. Street North.
- Jungle Terrace applied for and received a \$1,000.00 award from the Police Forfeiture Act Grant. The money is to be used for flashlights and dead bolts for neighborhood safety.
- The Jungle Terrace Civic Association applied for and received a \$2,300 grant from the city Partnership office. The grant to be used for neighborhood identification signs.
- Our linear park on 30th. Avenue N. between 66th. Way N. and 68Street N. is almost complete. Six flowering trees have been planted at both ends of the park. Two green benches, two dog sanitation stations and two oak trees have been planted in the center. Our two large identification signs are being constructed, and should be installed in the spring.
- **Steve Plice** spoke about the Tyrone Charette which was held on November 14 and 15. Thirteen Jungle Terrace members attended. A Friday night bus tour and a all day Saturday lecture was included. After the Saturday lecture those in attendance were given 30 minutes to draw what they thought the Tyrone area should look like with a 20 percent growth factor added. Our members did not agree on the 20 percent growth factor for our area. A letter is being written expressing the views of the Jungle Terrace Civic Association.
- Meeting Adjourned 8:40PM.



Newsletter minutes by **Tom Killian**



Aida's Beauty Salon
 * Hair Care *
 7233 Central Avenue
 St. Petersburg, FL.
 By Appt. or
 Walkins welcome
 727-302-0096





Rolls-Royce



JAGUAR

CHRYSLER





VOLVO



**Bill GRAMLEY'S
AUTOMOTIVE**

347-7676

JAGUAR - MERCEDES
BMW - VOLVO - ROLLS-ROYCE
EUROPEAN DOMESTIC JAPANESE

Extended Warranty

Service & Repair

Foreign & Domestic

SUV's



Pickup Trucks



3984 Tyrone Blvd. N., St. Petersburg, Fl. 33710

HONDA



Mercedes-Benz

GM



TOYOTA

WHAT DO MOST PEOPLE DO ON A DATE? Dates are for having fun, and people should use them to get to know each other. Even boys have something to say if you listen long enough. * Lynnette, age 8 (Isn't she a treasure)

2004 Annual Membership Dues Due in January

If you have not renewed your membership in the Jungle Terrace Civic Association, please take a moment to fill out this membership form and bring it to the next meeting or send your dues to the address below.

This is your neighborhood association and we work for you and your neighborhood. Please include \$12.00 per household annual membership dues, due in January of each year. If you can donate more than the membership dues it would be appreciated. We use the money to publish and mail your newsletter, hold a monthly membership meeting and sponsor an Easter Egg Hunt for the neighborhood children.

We are a Nonprofit 501 (c) 3 Tax Exempt Civic Association.

NAME: _____

ADDRESS: _____ ZIP _____

PHONE: _____

E-MAIL: _____

Dues: **\$12.00** Donation amount: _____

Please make checks payable to:

Jungle Terrace Civic Association for \$12.00 .

Mail to: **Tom Killian, 2275 80th Street N. , St. Petersburg, FL. 33710** Phone 343-2041

Anderson/Narvaez Mound at Jungle Prada Mound Park SACRED LANDS PRESERVATION AND EDUCATION, INC.

1620 Park St. No. St. Petersburg, Fl. (727) 347-0354

Sacred Lands Preservation and Education, Inc. is a nonprofit organization dedicated to preserving land that has historical and archeological significance. More specifically they are committed to protect the Narvaez / Anderson site which is the home of an ancient Tocobago village. They honor the Tocobago Indians who lived here and are now gone and unable to speak for themselves.

Harold and Frances Anderson bought this property in the 1940's and hosted many activities here over the years. Countless visitors have enjoyed the land. This site is now owned and maintained by Harold and Frances' son Eric and his Wife Doris.

It is their intention to provide continuity and share this place of beauty with others. They host a Native American sweat lodge biweekly where those interested can experience prayer and healing the Native American way. They also hold a peace meditation circle biweekly around the sacred fire.

They are preparing programs about the history of this land, environmental issues, nature and spirituality. They have a special interest in the arts and music and plan to host workshops on instrument and drum making, as well as communicating through music. They have many ideas to share with you. Donations appreciated .

For Additional pictures, please visit ;

www.JungleTerrace.org

Also for scheduled events and contact information, please visit;

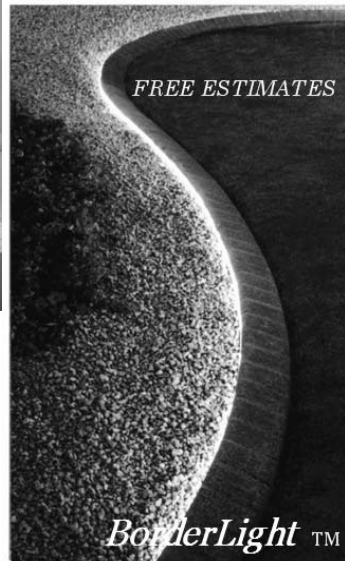
www.sacredlands.info



Sweat Lodge. *The Lakota Indians knew that raising the body temperature would aid in curing sickness. Today we know that this kills germs. They used this technique even before the arrival of the Europeans. The Sweat Lodge (left) is used today in the Lakota way for the same purpose. Below is the pit where rocks are heated and placed in the sweat lodge.*

Doris Anderson in the display building.





Creative Curbing Inc.
FREE Estimates
The Ultimate In Curb Appeal
 Our concrete borders look and feel like genuine brick and stone.
 727 **384-4715**

Jungle Terrace Picnic by Tom Killian

The Jungle Terrace Civic Association would like to thank Linda and Ed Carlson for the use of their home for our 2003 Picnic. Forty Eight people attended our November 22 outdoor picnic, on a beautiful 80 Degree day. Vice-President Rich Meredith cooked hamburgers for our members, Linda Sessions made deviled eggs and helped us set up the food. Lyn Dexter and Ron Russell helped us purchase our food and Ron made his famous firehouse baked bean dish. Albertsons supplied us with the delicious sandwiches. Three restaurant gift certificates were awarded to: Vicki Bouyoukas, Marilyn Brunette and KC Jones in our free raffle drawing. The picnic gave our members a good opportunity to get to know each other in a different setting. We were very pleased with the turnout and plan to run another picnic next year. If you have any suggestions on how to make it better please let me know. Additional pictures at;

www.JungleTerrace.org



With this ad \$50 off with 100 linear feet order
 \$100 off with 200 linear feet order

Mediation Specialists
 Providing Dispute Resolution For the Commercial, Business & Residential Community.
 We Specialize in Pre-Litigation Conflicts Regarding Consumer, Employee, Contract and Insurance Disputes. We offer Flexible Scheduling
 Telephone: 727/345-7000
 Cert# 01933R Not a Law Firm

Stylecraft
 Window Treatments, Inc.
 501 - 9th STREET NORTH
 ST. PETERSBURG, FLORIDA 33701-2198
 PHONE 894-6858 • FAX 821-5566
 TOLL FREE 1-800-758-2759

- DRAPERIES & BEDSPREADS
- VALANCES & TOP TREATMENTS
- VERTICAL & HORIZONTAL BLINDS
- MICRO & MINI & MID SIZE BLINDS
- SHUTTERS & 1" & 2" WOOD BLINDS
- DUETTE & CELLULAR SHADES
- FABRIC PLEATED SHADES
- UPHOLSTERY & WALLPAPER
- CARPET & FLOORING
- REPAIRS & ALTERATIONS

Armand Theodore Joyal II
 Manager



KC Jones
Jungle
News



KC Jones

Broker-Vice President
Realty Executives
4020 Park St. N.
St. Petersburg, FL. 33709
Cell: 727-458-5263
Business: 727-347-1000
Fax: 727-345-6969

New Listings

Pinellas Point Pool Home

3 bedroom 2 bath split plan with 1600 htd. SF. Large screen enclosed pool. 77 x 123 lot with garage. New tile flooring throughout.
\$165,000.00



Brand new Townhomes by Beazer

3 bedroom 2 bath models with 1600 SF Located off Starkey between Ulmerton and East Bay. Great kitchens with all appliances, master bath with steeping tub and seperate shower.
\$146,000.00
2 bedroom models with 1200 SF also available starting at In the \$120,000's. Small community with pool.

Homes sold in our neighborhood since November 28, 2003

| Address | Bed/Bath | Sq. Feet | List Price |
|-------------------|----------|----------|--------------|
| 7137 34th Ave N. | 3/1 | 920 | \$97,500.00 |
| 8131 38th Ave. N. | 2/1 | 1,100 | \$99,500.00 |
| 8140 32nd Ave N. | 2/1 | 912 | \$119,900.00 |
| 7875 36th Ave N. | 4/1 | 1,268 | \$129,900.00 |
| 8251 27th Ave. N. | 3/2 | 1,447 | \$209,000.00 |

The sold prices have not been included to protect the privacy of the Buyers. Please call for additional information. The information sited in this ad is obtained from the MLS system, Realtors, Owners, and public records. The properties have been listed and sold by various participants in the MLS system.

Realty Executives your Local Real Estate Company

Holiday Greetings from the Jungle Terrace Civic Association

Listed below is a review of some of our activities held during 2003. I would like to thank all the dedicated people who helped make them a success.

- Jungle Terrace holds a monthly membership meeting and publishes a monthly newsletter 11 times a year (except December).
- January-Started City Team Meetings per our Jungle Terrace Neighborhood Plan.
- April-Won a unanimous 8-0 victory before the Planning Commission against a developer and the city who wanted to change the zoning in our Industrial Park.
- April-Held Easter Egg Hunt for children at Walter Fuller Park. 175 people attended, 5 bicycles were given as top prizes.
- April-Jungle Terrace hosted the Green Thumb Festival, 10,000 people attended. We ran a successful Television raffle at Walter Fuller Park.
- April-Jungle Terrace is awarded Honorable Mention by the city for Best Neighborhood Project. Gateway Entrance Signs and Landscaping.
- May-Three Jungle Terrace members graduate from the 2003 CONA Neighborhood

Leadership Program. Mary Scott, Lyn Dexter, Ron Russell.

- June-Jungle Terrace gives a \$200.00 Savings bond to the winner of an essay contest at Azalea Middle School.
- September-Jungle Terrace sponsors two members to attend the Sarasota Neighborhood Conference, Lyn Dexter and Ron Russell.
- September-Jungle Terrace developed a linear park on 30th. Avenue North between 68St. N. and 66St. N. Fourteen Flowering Trees, two park benches and two dog sanitation stations. Two large entrance signs are included in this years Partnership grant.
- September-Jungle Terrace developed a new Web site, www.JungleTerrace.org please log on and see what is happening in the Terrace.
- October-Pets in the Park ,Sixty one animals enter the contest many are winners at the Walter Fuller Dog Park.Sponsored by JTCA.
- October-Political Forum Night,Sponsored by JTCA City Council candidates and Airport issues.
- November-Health

Fair and Bicycle Rodeo sponsored by JTCA. Walter Fuller Park. Five bicycle awards. St.Petersburg General Hospital puts on the Health Fair.

- November-Jungle Terrace Picnic, outdoor cookout at members home.
- November-Jungle Terrace receives a \$1,000.00 Police Forfeiture Grant for neighborhood safety items.
- November-Jungle Terrace receives Partnership Grant from city for identification signs.
- November-Community Police Officer Rich Hladik is awarded a plaque and dinner at Carrabba's for his four years of outstanding service to Jungle Terrace.
- Happy holidays to all from the Jungle Terrace Civic Association.

Tom Killian President

Ever have a child go to bed with chewing gum in their mouth and end up with it in their hair the next morning? Don't panic! It can be easily removed with peanut butter.

(Continued from page 1)

tion at the Police Training Building is for neighborhood safety items, flashlights and deadbolts. Jungle Terrace thanks Chief Harmon, Sherman Smith and Elizabeth Ledbetter for their continued support of our neighborhood.

Things That Make You Go "HMMMM....."

If you throw a cat out a car window, does it become kitty litter?

When they first invented the clock, how did they know what time it was to set it to?

Why didn't Noah swat those two mosquitoes?

TREKK FIX GRAFX
CUSTOM DESIGNS
 727-347-1719

- Imprinted Sportswear
- Mugs, Mousepads
- Name Tags, Keychains
- Plaques, License Plates
- Magnets, Tiles
- Any Amount 1-1000
- Quantity Discounts
- Schools, Clubs, Family
- Promotions, Reunions

SAFFRON'S



AT HISTORIC
JUNGLE PRADA
 ST. PETERSBURG, FLORIDA

There's a little bit of Saffron's for everyone under the sun!

Mention this ad for a complimentary Cocktail

The "early bird catches the Worm" ... but who wants worms? At Saffron's we call it 'Late Lunch' Order off our lusions lunch menu 11 am - 5 pm Mon. - Fri.

Sunday Brunch 11 am - 3 pm
 Daily Dinner 'til 10 pm
 Friday and Saturday Live Music

727-343-5410

**1700 PART ST.N.
 ST. PETERSBURG**

Catering / Weddings / Meetings

www.saffronscuisine.com



Your Neighborhood Tax Professionals



**Helping Individuals,
Businesses, Estates & Trusts
Since 1985**

When it comes to having your income taxes prepared and filed, choose National Income Tax & Accounting, Inc.

Our approach is simple: offer professional, personalized service at reasonable prices.

Professional

At National Income Tax your taxes will be prepared by a tax Professional. Tom & Karen Gargiulo are Enrolled to Practice before the I.R.S. For more informationa about E.A.'s, please go to our website www.nationalincometax.com.

Personalized

You will receive a personalized appointment in a private office. No waiting. No impersonal cubicles.

Reasonable

Our pricing is affordable and often less than our competitors. Call for a quote.

Tax Preparation

- Individuals
- Sole Proprietors
- Partnerships
- Corporations
- Estates
- Trusts



**\$ 10.00 Off
Tax Preparation**
new clients only

Free E-Filing
\$ 40.00 Values
with tax prep

**\$ 25.00 Off
Business Tax Prep**
new clients only

**Refund
Anticipation Loans**
from **\$ 89.00**

Conveniently located at
2952 66th St N

Call for an appointment
345-7790

www.nationalincometax.com

(Continued from page 1)

rarily later. For the next few weeks, no detours are planned, officials say.

"Detours will be set up later on as construction gets in full swing," said Eddie Flewellen, senior DOT inspector.

It's not yet clear where they will be situated, officials said.

On Monday, surveying equipment, a few orange traffic cones and a couple of tractors suggested the start of the project.

Some of the heavier work, such as installing bridge-supporting drill shafts, will be done at night when the trail is closed.

Federal money is paying for the project. Johnson Brothers, a construction company whose headquarters are in Orlando, is doing the work.

The bridge will be the fourth to open during the past few years along the trail's southern reaches. Counting the 38th Avenue job, nearly \$12-million will have been spent.

One bridge spanned Cross Bayou so that users would not have to negotiate Seminole Bridge and Bay Pines Boulevard. The others crossed busy traffic arteries.

The new bridge will neutralize a particularly dicey intersection. County planning figures show an average daily vehicle count of 42,380 at 38th Avenue and Tyrone Boulevard, ranking it among the city's busier junctions. The trail intersection lies just a few dozen yards east.

It's also near an access road to a busy commercial and retail strip containing a Wal-Mart. Trail travelers have to watch closely for vehicles going in and out. Likewise, motorists have to watch out for the travelers.

Since it opened in 1990, the trail has become nationally recognized as an urban "linear park." County officials estimate it attracts more than 1-million users each year.

Its major feature is a 34-mile strip from 34th Street S near Gibbs High School in St. Petersburg to U.S. 19 east of Tarpon Springs. A spur connects the trail to Honeymoon Island in Dunedin. Another section, unconnected to the main trail, runs parallel to East Lake Road east of Lake Tarpon in north Pinellas.

Plans call for eventual leasing of power easements from Progress Energy to create a 22-mile trail on the county's east side.

And there are other concepts, such as St. Petersburg's bicycle and pedestrian plan, that would provide links to trails. The vision is that in years to come, trails and linkages would allow users access to the entire county.

© Copyright 2003 St. Petersburg Times. All rights reserved

"The Take-Out Order"

An elderly woman recently died. Having never married, she requested no male pallbearers. In her handwritten instructions for her memorial service, she wrote,



"They wouldn't take me out while I was alive, so I don't want them to take me out when I'm dead."

BARKATT PAINTING SERVICES

Specializing in Water Proofing & Custom Rubber Coatings Residential Interiors and Exteriors

727-492-2565

Insurance Claims Welcome

Poppa's Dump Cake

Preheat oven to 275 deg F

Using a 9 X 12 baking dish, pour in the order listed (distribute evenly). DO NOT MIX.

1 can (12oz) pie filling - crushed pineapple or apple

1 can (12oz) pie filling - cherry or blueberry

1 box cake mix (Duncan Hines moist deluxe golden butter)

2 sticks melted butter or margarine

1 can coconut flakes

1 cup walnut or pecans (pieces)

Bake at 275 deg F for approximately 2 hours

* thanks to neighbor **Millie Pestrilo**



(727) 344-1604

Extra Closet

100% Air Conditioned Storage

KEN & BOB
Managers

2401 Anvil Street N.
St. Petersburg, FL 33710

DAN'S HAULING, INC.

Mary Lombardi / Treasurer
8110 30th Ave. N., St. Pete, FL 33710
(727) 341-1135 • Fax (727) 381-1114



WE HAUL ANYTHING!

- Construction Sites
- Demo Work
- Garage Clean-Outs
- Yard Clean-Ups
- Drop Off Service
- 12 Cu Yard
- Same Day Svc.
- Free Estimates



THE HISTORY
OF THE
JUNGLE
St. Petersburg, Florida

By
Stephanie A. Jeremias



*Palmettos and Scrub Oak in the Depths of the Jungle
St. Petersburg, Florida*

H. Walter Fuller, born in 1865, was an Atlantan. He came to Tampa in 1883 as a victim of tuberculosis and engaged in citrus farming and coastal trading. His future began to take shape when he moved to Bradenton in 1886 and went into road building and contracting.

Fuller, president of Fuller Enterprises, owned and operated an electric street car company in Bradenton, and was put in charge

of managing and extending St. Petersburg's street car lines, which were privately owned. This began more than six frenetic decades of Fuller enterprises and activities in Pinellas.

In the early 20th Century, the Jungle Terrace area became one of the finest vacation destinations in Pinellas County. But before any of this could happen, the western part of town had to be opened for development. A campaign was launched to build a

*A Trolley Makes its Way Through The Jungle
St. Petersburg, Florida*



paved road from 9th Street to Boca Ciega Bay.

From 1909 to 1917 H. Walter Fuller extended the trolley line west from St. Petersburg's downtown business district centered on 9th Street and Central Avenue, to Boca Ciega Bay (where the Fullers owned a large amount of land). The first phase was completed to 28th Street in February 1913 and on to Boca Ciega Bay later that fall. The trolley line was extended the full distance down Central Avenue – seven miles straight across the peninsula to the wilderness area that Walter P. Fuller named "the Jungle" The street turned North to what is now called Park Street and to Elbow Lane. It turned around at Elbow Lane and made the trip back to town. A wooden pier was built in December 1913 at the foot of Elbow Lane.

Fuller became a millionaire and is credited with starting the city's first real land boom from 1911 to 1914.

Around this time, son Walter P. Fuller, who was born in 1894, was a partner and manager of eleven corporations controlled by his father, including a Tampa Bay passenger steamship line, a Gulfport to Passe-a-Grille boat line and the first St. Petersburg electric power plant.

Walter P. Fuller was even more versatile and venturesome than his father. During his lifetime, he owned 3,200 acres of St. Petersburg, 2,500 acres in central Pinellas and built 1,400 houses.

After the trolley line opened in December 1913, development of the Jungle area moved swiftly. Walter P. paid for paving 16

miles of city streets, the West Central subdivisions from 28th Street to the Bay were put on the market, the Sunset Hotel at the

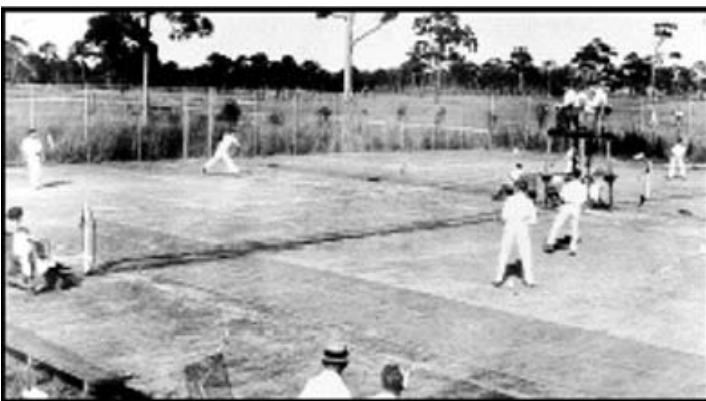
corner of Central Avenue and Park Street opened in 1915 (still in use today), and the crown jewel of the Jungle development, the Jungle Hotel, was built at Park Street and 5th Avenue N. The first golf course, St. Petersburg Country Club, was opened on January 1, 1916 and was later renamed the Jungle Country Club (The hotel and clubhouse are now the Admiral Farragut Academy.)



Originally the St. Petersburg Country Club, later named The Jungle Country Club. St. Petersburg, Florida



*Two Cars at Park and Second Avenue
St. Petersburg, Florida*



*Tennis at the Jungle Country Club
St. Petersburg, Florida*

The hotel even had its own radio station and airport, for WSUN Radio emanated from there and the Piper-Fuller Airport was the land where Tyrone Square Mall is now located. Al Capone and other notorious characters used the airport for easy access to the Jungle resort area. According to legend, Al Capone was a part owner of the Jungle Prada nightclub. Saffron's Restaurant claims that there is still an un-opened safe in the building that dates back to the Al Capone days.

The Jungle Prada shopping complex (now the Saffron's Restaurant building) was built in 1923-1924 on an Indian burial

(Continued on page 15)



*The Jungle Hotel (Now Admiral Farragut Academy)
St. Petersburg, Florida*



*Picturesque Jungle Roadway
St. Petersburg, Florida*

Azalea Branch Library News

Preschool and Mother Goose audiences will be enjoying the following themes for the next few weeks:

“Cars and Trucks” on January 13th and 14th, “Bubbles and Bathtime” on January 20th and 21st, “Going on a Bear Hunt” on January 27th and 28th, “Celebrating Black History” on February 3rd and 4th, “Valentines stories on the 10th and 11th and “Frogs and Toads” on the 17th and 18th. The Preschool children must be ages 3 through 5 and Mother Goose is for infants to 3 years. Storytime is every Tuesday and Wednesday with Preschool at 10:00 and Mother Goose at 11:00.



Super Saturday will be held on Saturday, January 24th from 1:00 until 2:30. This program is for school age children ages 6 through 12 and our program will be “A Bad Hair Day”. Children will have a great time with stories, songs and a take home craft. February’s Super Saturday will be on Valentine’s Day when we will have the theme “You Gotta Have Heart”.



“The Winter of Discontent” by John Steinbeck will be the topic for our adult book discussion on Wednesday, January 21st at 1:30. Please read the book and join us for an interesting time!

by Donarita Vocca

Walter Fuller Center News

BEFORE & AFTER SCHOOL PROGRAMS

Our Before & After School Programs started on August 5th. The Before School Program, which runs from 7:30 am to 9:30 am, is for students going to Azalea Middle. The After School Program, 1:50pm to 5:30pm, draws students from Azalea Elementary. Both programs still have spots available, so if you are interested, you can pick up the paperwork in the office. If there are any questions please call 893-7443.



SATURDAY NIGHT JAMZ

On the first Saturday of every month we will have Saturday Night Jamz. This program is for children in 2nd thru 5th grade and runs from 7:00pm to 10:30pm. While here your child will be able to participate in games, sports tournaments, dancing, and also purchase snacks from our concession stand. The price for Saturday Night Jamz is \$5.00, which includes a slice of pizza.



by Brad Rice

Vineyard Designs

Custom Silk Florals & Home Accents

5241 Park Street N.

(In Carmelita’s Restaurant Plaza)

547-6492



Kathy Danielson, Owner/Designer

10% off with this ad

AWN TECH
~Factory Direct~

Canvas or Vinyl



Commercial & Residential

Let Us Design Something
Unique For You!

727-528-3918

Saturdays are better than ever at the Science Center. A whole new year full of discovery and fun!



Saturdays 10 a.m.-4 p.m. \$5 General Admission Per Person, Children Under 3 Free Members Receive \$1 Off Per Person.



All Shows, Exhibits & Special Programs Are Included In The Admission Price.

Planetarium Shows 11:30 a.m. & 2:30 p.m., Laser Show 1:30 p.m., Special Program 2:00 p.m.

Special Program Schedule:

1/10 Stingray Science!

The Science Center's very own stingray, "Sugar," will teach you the stingray shuffle and introduce you to some of his friends.

1/17 Gator Safety!

The Science Center's "gator Guy" and his pal "Sawgrass" will teach you the rules to follow around alligators! This is for your safety and theirs.

1/24 Ah! To Be Furry & Warm!

At this time of the year, it's nice to be a mammal. Come and meet some of the Science Center's "furry" residents.

1/31 Magical Magnets!

What can float in the air, lead you when you're lost and help run a motor? Magnets! Learn the secrets of these amazing objects.

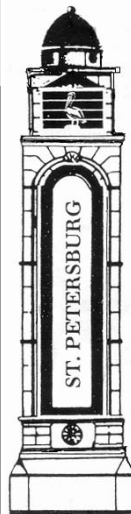
2/7 Digging Up Dinosaurs!

Dinosaurs have been extinct for thousands of years...or have they? Have you seen a dinosaur lately? Come to the Science Center and find out!



by Theresa Klingel

Now there are more overweight people in America than average-weight people. So overweight people are now average. Which means you've met your New Year's resolution. -- Jay Leno



Tom Killian, JTCA President, presents Rich Hladik, our Community Policing Officer, with an award for his participation and outstanding contributions to the Jungle Terrace Civic Association.

HOW DO YOU DECIDE WHO TO MARRY?

You got to find somebody who likes the same stuff. Like, if you like sports, she should like it that you like sports, and she should keep the chips and dip coming. * Alan, age 10

A New Year's resolution is something that goes in one year and out the other. -- Unknown

Mike Krautkremer's Lawn Maintenance

Residential/Commercial

Licensed and Insured

Mow

Edge

Trim

Hedges

Mulch

Honest

Dependable

Per cut or per month

Free Estimates

Call (727) 647-0794

Your Neighborhood

Lawn Service



**YOGA • AEROBICS • LIFECYCLE
NAUTILUS • FREE WEIGHTS**

**Sparta Fitness Center
and
Sports Medicine**

**NO CONTRACTS
\$19.99 PER MONTH**

6701 - 38th Ave. No.
Building C
St. Petersburg, FL 33710

384-4111

Tourtelot Brothers Inc. Real Estate since 1928



Betsy Robertson Dosh
 Realtor - Associate
 Residential Division

Fax: (727) 381-2590 Toll Free: (727) 757-7350
 3000 - 66th Street North St. Petersburg, Florida 33710
 414 4th Avenue North St. Petersburg, Florida 33701

“Your Neighbor”

Betsy Robertson Dosh (727) 384-3434

HOW CAN A STRANGER TELL IF TWO PEOPLE ARE MARRIED? You might have to guess, based on whether they seem to be yelling at the same kids. *Derrick, age 8



TAXI



(727) 367-3702

www.BatsTaxi.com

Fax 367-8354

P.O. Box 66330 • St. Pete Beach, FL 33736

Art Stone
 COMPANY INC.

Orchids



MICHAEL J. POLEN
 PAULA J. POLEN
 Seedlings to Blooming
 All Potting Supplies

3611 Tyrone Blvd.
 St. Petersburg
 Florida 33710
 (813) 345-6733

**Jungle Terrace Community Policing
 Officer Rich Hladik 892-5953**

- Last month has been quiet.
- Pep Boys storage area has been used by transients for sleeping .I contacted Pep Boys and the area has been locked off.
- No major crimes, 1 residential burglary, domestic related.
- Holiday season coming up lock your packages in the trunk. Be careful of purse snatchers.



• Officer Hladik was presented with a plaque and a \$20.00 gift certificate to Carrabba's by Jungle Terrace. A letter was sent to Chief Harmon telling him of the fine job Officer Rich is doing for our area.



The Jungle Terrace Civic Association donated and installed a 14" Ingraham clock in our meeting room at the Walter Fuller Youth Center. The clock should be an asset to all who use the room in the future.

FOR SALE BY OWNER: Complete set of Encyclopedia Britannica. 45 volumes. Excellent condition. \$1,000.00 or best offer. No longer needed. Got married last month.....Wife knows everything.

January 2004

Astrological Sign: Capricorn (Dec 22 - Jan 20)

and Aquarius (Jan 19 - Feb 19)

Flower of the Month: Carnation

Birthstone: Garnet

| | | | |
|---|---------------|------|------------|
| ☾ | Full Moon | 7th | 10:40 a.m. |
| ☾ | Last Quarter | 14th | 11:46 p.m. |
| ☾ | New Moon | 21st | 4:05 p.m. |
| ☾ | First Quarter | 29th | 1:03 a.m. |

| | |
|------|-------------------|
| 1st | New Years Day |
| 19th | M.L.King Birthday |

February 2004

Astrological Sign: Aquarius (Jan 19 - Feb 19)

and Pisces (Feb 19 - March 20)

Flower of the Month: Violets

Birthstone: Amethyst

| | | | |
|---|---------------|------|------------|
| ☾ | Full Moon | 6th | 3:47 a.m. |
| ☾ | Last Quarter | 13th | 8:40 a.m. |
| ☾ | New Moon | 20th | 4:18 a.m. |
| ☾ | First Quarter | 27th | 10:24 p.m. |

| | |
|------|---------------------|
| 2nd | Groundhog Day |
| 14th | St. Valentine's Day |
| 29th | Leap Year Day |



Mark Pelham
Store Director

ALBERTSONS INC. 3900 66TH. STREET NORTH
SAINT PETERSBURG, FLORIDA 33709
727-381-4312 FAX 727-381-6324

For a Relaxing and Personal Atmosphere



AZALEA
Barber & Styling

Complimentary Neck & Shoulder
Massage with Every Haircut



7112 - 9th Ave. No. 798-0047 Carol Taverna
Tues day - Saturday Owner
9:00 am. to 5:00 pm.
Late appointments available

(Continued from page 11)

mound. The complex had a large restaurant, several small stores and a gas station. It had a successful speakeasy named "The Gangplank, which became St. Petersburg's first nightclub. Count Bassie and Duke Ellington played at the Gangplank and Babe Ruth was married there. During the prohibition era, there was a secret underground tunnel leading from the bay to Jungle Prada, which was used by bootleggers. The complex later becomes Walter Fuller Park in 1972.

In 1970, The City of St. Petersburg acquired the Jungle Park property on 1700 Elbow Lane to prevent commercial development of the site and designated it the Jungle Prada Park.

Jungle Terrace Web Site



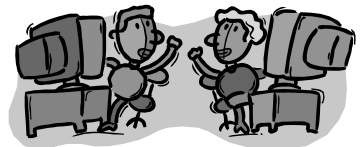
We have a new web site for the Jungle Terrace Civic Association. It is at URL www.JungleTerrace.org. It is available for viewing to anyone that has internet access. The web site has important organizational information, a Neighborhood map, the softcopy Newsletter and much more. The Newsletter and map are in PDF format. If you don't have the Adobe PDF reader you can download it free at www.adobe.com

Look for this button.



The Jungle Terrace Internet Discussion List

Jungle Terrace has an Internet discussion list that is available to all neighborhood residents free. If you have a computer you can join. Learn what is happening today. Don't wait until the next meeting or until you receive your next newsletter. When you sign onto the list, you can then participate in discussions concerning things that are important to our neighborhood. Help us solve problems and make our neighborhood the best in the city. To join the list, send an e-mail to Webmaster Steve Plice at ssplice@aol.com



Steve Plice elected Vice-President of The Council of Neighborhood Associations (CONA).

Steve Plice who served four years as our president was elected at the December 2003 CONA meeting to serve as their 2004 Vice-President. Steve brings a wealth of experience and ideas to his new position which will benefit the council. We all wish Steve the very best in his new position.

KEN CHAMBERS
Owner

7830 38th Ave. No.
St. Pete, FL 33710

SUNCOAST UPHOLSTERY

"Done Right The First Time"

727-381-3365
Shop / Fax

727-460-2057
Cell

**This Coupon Good For One Tune-up
On Any Manual Mower**



(Parts & Labor Included)

For Just **\$37.50**



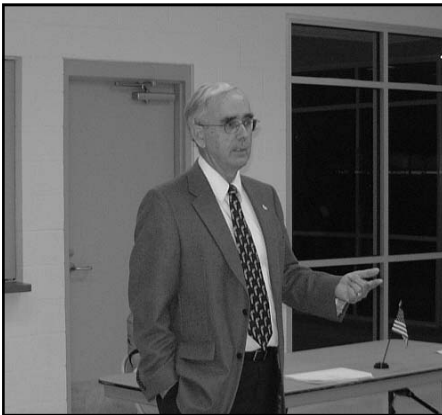
Pressure Washer Rental

AFFORDABLE MOWERS

7830 38th Avenue N., Suite #1

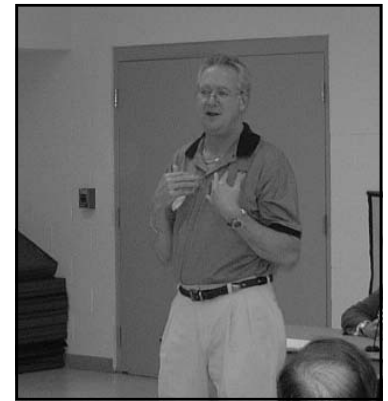
St. Petersburg, FL 33710

(727) 347-3103



November Meeting Speakers

The November JTCA meeting was very informative. **Circuit Court Judge Logan** (left) discussed Family Court and the many variables he encounters when dealing with the welfare of children in broken homes. **Public Defender Bob Dillinger** (right) relates how his office and staff are working to provide quality legal assistance to the less fortunate in our community. Bob also told us how his office is working to reduce the number of repeat offenders with an innovative substance abuse program.



Emily asks a question of **Judge Logan**. We are fortunate to have neighbors that take the time to really get involved and look out for our interests. Emily is known throughout the city for her activism.

by **Bob Miller**



Your Ad Could Be Here.

| | |
|--------------------|-----------------|
| Business Card Size | \$45.00 a year |
| ¼ Page Ad | \$100.00 a year |
| ½ Page Ad | \$200.00 a year |
| Full Page Ad | \$400.00 a year |
| Call Tom Killian | 343-2041 |

KR FRITZ

- **Designs & Drafting**
- **Residential Addition & Renovation Construction Plans**
- **Ready to Permit & Build**
- **Ideal for Homeowner Contractor or Outside Contractor**
- **Construction Consulting**

384-4331

Mention this ad for a \$50 Discount

For A Lush Green Beautiful Lawn and Pest Free Home

Certified Pest Control Operator & Horticulturist on Staff



"Call Us & Relax"



FLORIDIAN
PEST & TURF MANAGEMENT, INC.

- Lawn Spraying
- Fertilizing
- Weed Control
- Pest Control

RESIDENTIAL & COMMERCIAL Professional Lawn Care & Pest Control

(727) 344-2407

Home of the Month

by Tom Killian

This month's Neighborhood Pride award goes to Robert and Francesca Cole. Their California style home built in 1977 is located at 3200 81st. St. N. This seven room home has a second floor garden. Drive by and see a unique home for our area.



Brad Rice, Manager of the Walter Fuller Youth Center, is presented with a Certificate of Appreciation from **Tom Killian**, JTCA President. Brad has been very helpful to Jungle Terrace with our many events held in the Park. We thank him and the city of St. Petersburg for their support.

Money Tip Do you have a will? If you are like 70 percent of Americans, the answer is no. How do you know if you need one? Well, a will is not just for the rich. Regardless of your assets, a will can ensure where your personal belongings and assets go. If you have children, you can designate a guardian without subjecting them to a court's decision. Getting a will can be as inexpensive as \$50. Make it your New Year's resolution to get this taken care of this year.

FASTSIGNS®

Sign and Graphic Solutions

Made Simple.®

- Banners
- Vehicle Graphics
- Full Color Graphics
- Exhibits & Displays
- Safety & ID Signs

www.fastsigns.com

4058 Park Street - St. Petersburg

727-341-0084

Important Phone Numbers

| | |
|--|----------|
| Emergencies | 911 |
| Rich Hladck Community Policing Officer | 892-5952 |
| Police (non-emergency) (CASA) | 893-7780 |
| City Council Office | 898-3671 |
| Codes (Ernie Turner) | 893-7177 |
| Elderly Information | 892-5537 |
| Garbage Collection Inf. | 893-7101 |
| Graffiti | 893-7334 |
| Library (Azalea) | 893-7394 |
| Mayor's Action Center | 893-7930 |
| Mosquito Control | 893-7111 |
| Public Works (Susan Fuchs) | 464-7503 |
| Rodent Control | 893-4137 |
| Street Light Maintenance (CL & P) | 893-7360 |
| Tip Line | 895-8711 |
| Water & Sewer Problems | 892-5000 |
| Walter Fuller Center | 893-7761 |
| Walter Fuller Pool | 893-7443 |
| For a free smoke detector Or home inspection | 893-7636 |
| | 893-7233 |

Mark Your Calendar

2004 Meeting Dates

January 19
 February 16
 March 15
 April 19
 May 17
 June 21
 July 19
 August 16
 September 20
 October 18
 November 15
 No December Meeting
 Social 6:45 P.M.
 Meeting 7:00 P.M.



Newsletter Articles

Do you have a letter, issue or article you would like to publish in the JTCA newsletter? We welcome letters, comments, and contributions from our neighbors. Send to: BluegrassBob@Earthlink.net

For more information, call Tom Killian at 343-2041.

What do chickens think we taste like?

Officers and Board Members

| | | |
|----------------|-------------------|----------|
| President | Tom Killian | 343-2041 |
| Vice President | Richard Meredith | 347-2550 |
| Secretary | Linda Sessions | 343-6196 |
| Treasurer | Mary Lou Mitchell | 345-4408 |
| Board Member | Dave McDonnell | 894-7605 |
| Board Member | Linda Mouriski | 381-4845 |
| Board Member | Steve Plice | 344-3120 |

Committees

| | | |
|-------------------|--|------------|
| | { BluegrassBob@Earthlink.net } | |
| Newsletter..... | { Bob Miller | 343-4436 } |
| Newsletter | Tom Killian | 343-2041 |
| Membership | Mary Lou Mitchell | 345-4408 |
| Traffic | Ron Russell | 345-7000 |
| Home of the month | Linda Mouriski | 381-4845 |
| CONA Report | Steve Plice | 344-3120 |
| Welcoming | Mary Scott | 381-1718 |
| | { BluegrassBob@Earthlink.net } | |
| WebMaster..... | { Bob Miller | 343-4436 } |

Jungle Terrace Civic Association Nominating Committee

January 19, 2004 is election night for officers and board members who will be running our association for the next year. Our Bylaws require that a Nominating Committee create a slate of candidates for each board position. We have a President, a Vice President, a Secretary, a Treasurer and three additional Board Members. All of these positions serve a one-year term.

The Nominating Committee submits its slate of candidates to the membership at our November meeting. We do not hold membership meetings in December.

At the January meeting, additional nominations are accepted from the floor.

We would like new people to get involved and bring new ideas into our organization. Please consider running for a position.

All people running for office must have their 2004 dues paid by election night.

This year Ed Carlson will serve as the Chairman of the nominating committee, Elizabeth Francis will assist.



www.JungleTerrace.org

JTCA Nominations for 2004

Officers: President: Tom Killian 343-2041

Vice President: Ron Russell 345-7000

Secretary: Lynn Dexter 345-7000

Treasurer: Mary Lou "Skip" Mitchell 345-4408

Board Members:

Linda Mouriski 381-4845 Home of the Month

Dave McDonnell 894-7605 Business Community

Mary Scott 384-1718 CONA Leadership Graduate



Appreciation to Standing Committees:

**Newsletter Editor: Bob Miller,
assisted by Tom Killian, Linda Mouriski & others**

CONA Representative: Steve Plice

**WebMaster: Bob Miller
Web Site: www.JungleTerrace.org**

Welcoming: Mary Scott

Traffic: Ron Russell

Refreshment: Betsy Dosh (Larry Dosh)

Easter Egg Hunt: Skip Mitchell and Tom Killian

Membership: Mary Lou Mitchell

Home of the Month: Linda Mouriski



Specializing in:

- Pain Disorders
- Neck Back, Shoulder Pain
- Trauma Injuries
- Arthritis
- Fibromyalgia/CFS
- Migraines
- GYN Disorders
- Menopause Disorders
- Natural Hormone Replacement
- Digestive Disorders
- Stress/ Anxiety
- Acute/Chronic Disorders
- General Practice

Services Available

- Acupuncture/Acupressure
- Electro-Acupuncture
- Eclectic Stimulation (TENS)
- TuiNa Massage Therapy
- Herbal/Bionutrient Therapy
- Systemic Detoxification
- Infrared Heat
- Vacuum Cupping
- Dietary/Lifestyle Counseling
- Self-Healing Techniques
- Monthly Wellness Programs
- Discount Programs
- Weight Loss Programs

Andrea Guttveg, LAc, AP

Board Certified Acupuncture

Physician

and Oriental Medicine

PIP Auto Ins. Accepted

Patricia Medical Center

220 Patricia Ave.

Dunedin, FL 34698

3775 Central Ave.

St. Petersburg, FL 33713

Phone: (727) 736-9191

Cell: (727) 458-6207

Fax: (727) 736-8991



Sponsors Needed!

If you live in the Jungle Terrace neighborhood and own a local business, we need your help to sponsor your neighborhood newsletter, the official monthly publication of the Jungle Terrace Civic Association. Our rates are reasonable and our newsletter reaches people in your area that can purchase your service.

Business Card Size ad \$45.00 a year

¼ Page Ad \$100.00 a year

½ Page Ad \$200.00 a year

Full Page Ad \$400.00 a year

We could use advertisers who do plumbing, electrical service, sprinkler systems, roofers, rug cleaners, movers, pool service, restaurants, churches, and many other needed services.

Please call Tom Killian, 343-2041, and I will be glad to tell you how our newsletter can help you increase your business.



Science Center
Of Pinellas County, Inc.

7701 22nd Avenue North, St. Petersburg 33710

Phone: (727) 384-0027

www.sciencecenterofpinellas.com

Monday-Friday 9 a.m.-4 p.m., Saturday 10 a.m.-4 p.m.

Saturdays \$5/Person, Special Shows & Exhibits
for the whole family!

Classes & Workshops for Pre-K through 12th Grade!

**Heather Pillion
Janice Kaplan
Owners**



- Grooming
- Barkery
- Natural Pet Products & Supplies

tel: 727.345.8118

6840 22nd Ave. N. St. Petersburg, FL 33710

e-mail: bathnbiscuits.com@verizon.net

Vet Recommended

Jungle Terrace Civic Association
 Member: Council of Neighborhood
 Associations
 2275 80th Street North
 St. Petersburg, Florida 33710
 E-Mail: tomkillian@juno.com

Forwarding Service Requested

PRSRT STD
 U.S. POSTAGE PAID
 St. Petersburg, FL
 Permit No. 1084

AZALEA LITTLE LEAGUE, INC.

2900 75th Street North Mailing Address: P.O. Box 47871 St. Petersburg, FL 33710 (727) 347-3325

Azalea Little League is a non-profit organization that benefits children ages 5 to 16, who play baseball or softball. We also have a special Challenger Division as part of our league that benefits children who are physically and/or emotionally challenged.

Azalea is conveniently located at 2900 75th Street North, in the Jungle Terrace area of St. Petersburg. Azalea is not a City owned park; therefore, we rely upon volunteers, civic organizations, and community support as well as business sponsorships to help us run our programs and maintain our fields.

VOLUNTEERS ARE NEEDED AT ALL LEVELS! VOLUNTEER UMPIRES ARE NEEDED TRAINING PROVIDED! WE NEED SPONSORSHIPS!

For information about volunteering, sponsoring a Team or placing an Outfield Sign on our fences please call our league and leave a message or contact: Dana Hess, President 341-1153.

2004 Registration Dates:

Wednesday

January 7th 7 to 9 pm

Wednesday

January 14th 7 to 9 pm

Wednesday

January 21st 7 to 9 pm

Saturday

January 10th 10 am to 2 pm

Saturday

January 17th 10 am to 2 pm

Saturday

January 24th 10 am to 2 pm

NO REGISTRATIONS ACCEPTED AFTER JANUARY 24TH

