

Circulation 700+

Boca Ciega Bay



Jungle Terrace Civic Association

Awarded 2004 Newsletter of the Year

NOTICE:

Wed. Nov. 17th.
6PM
Dixieland Jazz
Bilmar Resort
See Page 2

The next JTCA Meeting will be on
Monday, November 15th, 2010
Social 6:30PM - Meeting 7:00PM
Walter Fuller Center 7891 26th. Avenue North

Meeting Agenda

- * Community Service Officer Detty
- * David Gruskin - Gruskin & LaBerge, PA
(Elder, Consumer, Family Law)

Jungle Terrace Dumpster Cleanup December 17, 18, 19

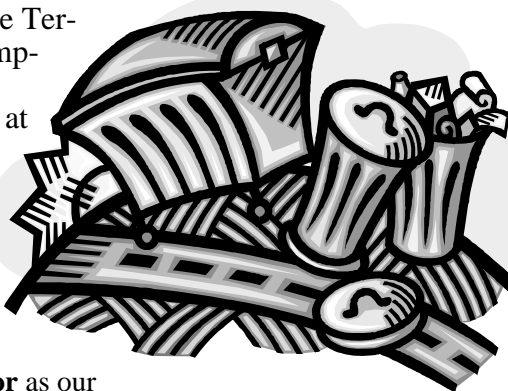
Dog Park Area
80th. St. N. & 30th. Ave. N

The city is providing at Jungle Terrace's request two large rollaway dumpsters for our Neighborhood cleanup.

Items which are not accepted at our brush site such as wood, chairs, sofas can be put in these dumpsters along with refrigerators and other metal items.

No chemicals or roofing materials. Call Tom Killian 343-2041 if you have questions.

BONUS: They are the same yellow color as our TRAIL PATROL t-shirts!!



In this issue

Membership Dues	2
President's Message	3
Meeting Minutes.....	7
JTCA Meeting Schedule.....	14
JTCA Discussion List.....	15
Important Phone Numbers.....	15
Officers/Board Members.....	15
Advertising Prices.....	15
Fire / Police Numbers.....	16

NEWSLETTER PRINTED BY

Sir Speedy

PRINTING • COPYING • DIGITAL NETWORK

4855 Park St. N.

727-545-9000

Holiday Greetings



Dixieland Jazz Band

Our Association is planning a Dixieland Jazz Nite on Wednesday November 17th. 6:00PM at the Bilmar Hotel on Treasure Island.

Brazzies Beach Bar has a terrific Dixieland Jazz group that has played there for forty five years. You can order dinner or drinks before the show. The group plays from 6:30PM to 9:30PM. Parking is free at the Bilmar 10650 Gulf Blvd. Treasure Island. You can walk off your dinner by taking a stroll on the beach.

Please come out do something different and meet your JTCA Neighbors.

Directions: Take Central Avenue west toward Treasure Island, when you reach Gulf Blvd. the Bilmar Resort Hotel will be in front of you

Please call me so I can reserve tables for our group **Tom Killian 343-2041**



Anvil Substation: Progress Energy, Davey Tree Clear Jungle by Pinellas Trail for JTCA



Allan Williams, Davey Tree, and Dr. Ed Carlson, JTCA



Left Photo: Back of Anvil Substation, along the Pinellas Trail



Above Photo: Large Bags of Trash Removed to Perfect the Area

Annual Membership Dues Due in January

To join Jungle Terrace Civic Association, please fill out this membership form and bring it to the next meeting, or mail your dues. Dues are \$15 per household, due each January. Please consider donating more than the membership dues, this is greatly appreciated!

We are a Nonprofit 501(c)3 Tax Exempt organization.

NAME: _____

ADDRESS: _____ ZIP _____

PHONE: _____

E-MAIL: _____

Mail to: JTCA, Bob Miller

8215 30th Ave. N., St Petersburg, Fl. 33710 Phone 727-343-4436

Dues: \$15.00 Donation: _____

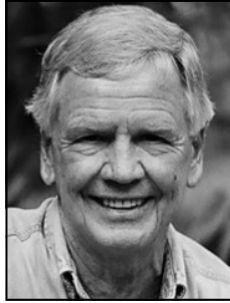
Please make checks payable to: ***Jungle Terrace Civic Association.***

Membership/Advertising Status: Upper right of mail label has the year (20XX) through which your dues are paid. **Current Members** - Annual dues paid any time of year will add a year to you membership. **Non-members** - Dues paid after August 1st will be counted as early payment for the next year. **Advertisers** - Label indicates month/year your ad renewal is due.

President's Message

Parking lot behind Jared's Jewelers is fenced and finally (after Codes report) has been mowed and cleaned up – efforts of 13 months.

Tennis Courts in WFP were resurfaced and repainted by **Welch Tennis** of Sun City. Thank you City of St. Petersburg for staying on top of details like this.



Dr. Ed Carlson
JTCA President

Eileen Dardis, Interim Secretary for JTCA begins the CONA Leadership Training Program in January. She also donated several hours to maintaining our Volunteers Celebration Garden.

The **Silversteins'** donated and planted in the garden 5 flower bushes.

Monica Abbott eagerly agreed to be our JTCA Representative to CONA. She participated in and photographed the August 18 CONA meeting. **Monica** also participated in the August 28 SPPD Crime Watch meeting, and 4 Central Avenue Meetings.. All events are available on www.HistoricDavista.com.

ENFORCEMENT: “**Leslie Curran** talked with the *St. Petersburg Times* about bike safety after 16 cyclists were ticketed in a safety campaign.” Graffiti and loose dogs in the park continue to be issues. Take photos with camera or cell phone and report to Police **893-7780**. – learn this by heart **893-7780**.

JTCA Volunteers in teams of two will be handing out “Dog Laws” flyers on the mornings of Nov 20 and 21. Please Volunteer. Fines are \$85 and go to \$500 for each of the 3 ordinances.

At the request of JTCA, Progress Energy invested 3 days cutting down and clearing out the jungle behind the substation property along the Pinellas Trail. They “chased out a couple 2 legged residents.” Sunday I checked the site, and one was back sleeping there. SPPD arrived in 7 minutes to deal with the vagrant. Scott cleaned up 21 bags of debris around the front, sides, and back of the Substation. Looks Great! I picked all the bags up in my car and put in

neighbors and my trash cans over a few cycles. See photos.

I also "serviced" 49 trees in our neighborhood over another weekend – mostly crepe myrtles – trim wild shoots of bottom, trim some on trees, Roundup around them, fertilize most, and put "protective shields" on the ones lawn service people were hitting with weed eater and mower.

Enjoy all the forthcoming Holidays, and we will get together again in January of 2011!

Community Library

Submitted by Kelly Malizia

The West St. Petersburg Community Library at St. Petersburg College is YOUR community library! We have some great events coming up in November. For the young adults, we have an exciting speed painting event on Thursday, November 18th @ 2:30pm. Ages 15-21 are welcome to come and enjoy food, music and prizes during this hands-only, timed painting competition. Prizes will be awarded. We are also offering free basic English classes for English language learners. The classes will occur Saturdays, November 6, 13 & 20 1pm and registration is required. Please contact Kelly Malizia for more information at 727-341-7183. Be sure to check out our computer classes for November, too. All of our classes and activities are listed on our website at www.splibraries.org.

Chess Classes

Chess classes taught by Jungle Terrace Instructors are available **Free of Charge** Tuesday 3:30PM to 5:30PM at the Walter Fuller Center 7891 26th. Avenue N. All levels. Chess Coaches-John Sweeny and Steve Fleshman.

Call Yaro Markewycz 344-1869



JTCA WINS 44th Annual City BEAUTIFICATION AWARD



Councilman Bill Dudley, Dr. Ed Carlson accepting for JTCA, and Mayor Bill Foster

In the ceremony at Sunken Gardens, with wine and hors d' oeuvres, JTCA was presented with the 44th Annual City Beautiful Commission's Award for "private initiative of groups whose volunteer efforts enhance the natural beauty of St. Petersburg. The 2010 award is presented to Jungle Terrace Civic Association for their long term efforts in improving Walter Fuller Park."

The proclamation details all the improvements over 9 years, then continues "In late 2009, to further improve Walter Fuller Park, a Volunteers Celebration Garden with extensive landscaping, large river boulders and bronze statuary was installed by JTCA volunteers who continue to provide all maintenance for this garden."

"This large, long-term collaborative effort by the City and JTCA has produced a 130 acre park that is one of the Crown Jewels in our City's extensive park system."

Dr. Carlson thanked retired Lee Metzger, John Green and Cliff Footlick, and active Phil Whitehouse, Clarence Scott (for help in moving BMX Track), Raul Quintana and Steve Oschner of Engineering, Linda Seufert for Green Thumb Festival, Jim DeBee in Parks who is so much hands on help, and Wesley and Patrick for daily care of our park.

Parks: Celebrating 100 Years of Waterfront Magic

Eleven parks stretching 23 blocks along Tampa Bay turn 100 years old in 2010.

In the early days of 1910 with a population of 1,575, the waterfront flirted with the ordinary. Where the Yacht Club stands, a power plant belched plumes of dark smoke. Beached boats and shanties littered a gritty beach and disreputable scows bobbed next to tumbledown docks.

Dreaming of dollars, businessmen planned wharves with warehouses and machinery, but a different way of thinking emerged. A philosophy that said sailboats and games on long stretches of green grass were superior to freighters; that craft shows were better than cargo docks; that a ferocious pinfish thrashing on a child's fishing line beat conveyors and forklifts any day.

Backed by crusading editor William L. Straub, in 1902, St. Petersburg's influential Board of Trade took a formal position supporting a waterfront open to all. "Nothing would count more in the building of the town," Straub wrote. In 1906, public waterfront boosters united. They dominated city elections. In 1909, the city began buying the first pieces of property along today's Beach Drive. In 1910, the first waterfront park was established between Fifth Avenue N and First Avenue S.

Following the establishment of the waterfront park, a developer named C. Perry Snell donated enough land to extend the public waterfront domain to Coffee Pot Bayou. Through the years, more donations and more city purchases assembled an emerald esplanade that you can walk, run or cycle from end-to-end, 18th Avenue NE to Albert Whitted Airport.

St. Petersburg's history is one with the waterfront. Thousands of sunny photographs sent around the world boosted tourism, put St. Petersburg on the map and brought early economic health to a young city. During World War II, servicemen quartered in downtown hotels marched on Beach Drive and drilled in bayside parks. Millions of people enjoy the waterfront year round. Dozens of events, large and small, draw the crowds.

And there is more: a stroll along a seawall or a cozy snooze in sunshine or shadow, a dolphin arching in the bay, a child's happy squeal on a playground slide and the thump and chatter of a softball game. These small elements, sometimes taken for granted, help explain our waterfront magic.

Happy Centennial St. Petersburg Waterfront!

Jungle Lake Outfall Storm Drainage Improvements

The City of St. Petersburg's Jungle Terrace neighborhood will undergo construction of a new larger capacity outfall system for Jungle Lake and the surrounding 470 acre drainage basin, and a nutrient separating baffle box structure to provide water quality improvements for the receiving waters of Boca Ciega Bay. All construction work is to take place within existing City right-of-way.

The construction is scheduled to commence in October 2010 and complete November, 2011. The sequence of installation of the new drainage line and associated structures is as follows:

- 27th Avenue North from Boca Ciega Bay to Park Street
- Park Street North from 27th to 28th Avenue North
- 28th Avenue North from Park Street to 80th Street
- Walter Fuller Park from the intersection of 28th Avenue North and 80th Street North to Jungle Lake

Local access to residents and businesses should be maintained at all times. The contractor, All American Concrete, shall notify you seven to ten days in advance of commencement of work in your area. The Contractor has been directed to make every effort to minimize any inconvenience throughout the construction phase. However, patience and cooperation will be appreciated for the minor disruptions that may occur.

The City will have a full time construction inspector available to answer questions or address concerns in the field. Feel free to contact Mr. Dirk Gribnitz, Engineering Construction Division, at (727) 892-5179.



MINUTES



**Eileen Dardis,
Interim Secretary**

Jungle Terrace Civic Association Minutes of Membership Meeting Monday September 20, 2010

Tom Killian called the meeting to order at 7 p.m. with twenty people in attendance.

Community Officer Detty led off the meeting by reminding us to be aware of what goes on in our neighborhood and to call the police if something seems suspicious. Either call, 911 or call the non-emergency number, 893-7780, and include the word "suspicious" in the complaint to get it top priority status. Officer Detty asked that if there are guns in your home that they are kept in a gun safe. Recently there have been a couple of homes broken into and guns were stolen along with other valuables. Lastly, he reiterated the importance of having a "Club" or alarm system for car security; and advised not to leave valuable items or change where it is visible because it only encourages the thieves to break into the car.

The guest speakers at this meeting were: Kimberly Paine from St. Petersburg's Mentoring and More Program, Melissa Brochu from the America Cancer Society's the Relay for Life of Tyrone event, and Jim Jackson, Pinellas School Board Candidate. Tom Killian introduced Monica Abbott who is the new the JTCA representative for the Council of Neighborhood Associations (CONA). He also reminded everyone of the Dumpster Cleanup weekend coming in December, 12/17 – 12/19. Anyone with old furniture or other items that will not be accepted by the Recycling Center may discard it in the large dumpsters which will be located in the parking lot near the Dog Park.

The meeting adjourned at 8:00 p.m.

From Food to Fitness...the old Publix is transforming into LA Fitness

Monica Abbott, HistoricDavista.com

LA Fitness, an Irvine, Calif. chain with more than 300 clubs, is putting its sixth club in the Tampa Bay area in the vacant Publix Super Market and onetime Dollar Duck store in the Marketplace Shopping Center at 6802 22nd Ave. N.

This 47,000-square foot LA Fitness will offer a multi-lane lap pool, numerous racquetball courts, full-court basketball, Kids Club child care, stationary bike spinning, free weights, cardio equipment, personal, group and corporate training, aerobics, juice bar and retail, along with other amenities.

The fitness center is scheduled to open in January 2011.

Cary Anderson, senior leasing agent with Regency Center was quoted as saying, "The addition of LA Fitness provides an opportunity to re-merchandise the center with more fitness-related stores and services."

The 90,296 square foot shopping center currently includes a wide variety of retail, restaurant and service businesses such as Starbucks, Planet Beach, Cody's Roadhouse Grill, Athenian Gardens, The UPS Store and others. For leasing information, contact Cary Anderson at 813-664-4823.



Sign changing at the Marketplace Mall signals a change for the better as LA Fitness leases the old Publix and Dollar Duck Stores to make a mega haven for fitness buffs of all shapes and sizes.



KC Jones

Broker-Vice President

Realty Executives
10209 Gulf Blvd.
Treasure Isle, FL 33706

Cell: 727-458-5263
KC@ KCJones.info.



Autumn Run
4 bedroom 2 bath pool home with new maple kitchen, stainless appliances, new roof, Cent. H & A, new sprinkler syst., 2 car garage and inside laundry. \$239,900.



Sailboat Key
2 bedroom 2 bath with a den. Underground parking. Great views of Boca Ceiga bay. Sold partially furnished. hurrican shutters and bahama shutters throughout. Pools, tennis, clubhouse and Marina. \$375,000.

St. Pete Beach Gulf front
2 bedroom 2 bath overlooking the gulf in desirable Silver Sands. 1470 htd. SF. Underground parking, gated community, with htd. pools, tennis courts, clubhouse, card rooms, gym and more! \$395,900



Madeira Beach cottage
2 bedroom 1 bath house, with inside laundry. Frame and siding construction. Within steps to the beach and within view of waterfront canal. Paver yard front and back. No maintenance! \$99,900.



Recent sales in Jungle Terrace From 6/23/10 to 8/23/2010

Address	BR/BA/garage	Sq. footage	Price	Days on Market
8335 37 Ave N.	5/5 waterfront	6,609	\$1,300,000.	152
2227 Pelham Rd. N.	4/2 waterfront	2832	499,000.	262
4086 85 St. N.	3/2 waterfront	1329	329,000.	250
8242 33 Ave N.	4/3/pool	1917	239,000.	54
8317 40 Ave N.	4/2/	1763	179,900.	78
6761 34 Ave N.	3/2	2005	172,000.	4
3900 69 St N.	3/2	1220	165,500.	84
6853 35 Terr N.	3/3	1630	129,000.	92
3100 Park St N.	2/1	1338	119,900.	20
8057 29 Ave N.	2/1	912	99,500.	68
8052 26 Ave N.	3/2	1776	94,900.	26
8080 31 Ave N.	2/2	717	51,900.	18
3304 73 St N.	3/1	1032	38,700.	16

Since August 23, 2010 to date there were 13 properties that sold in the Jungle area. The average square footage was 1888 and the price per square foot is running at \$106.66. However, the first three sales listed are waterfront and this will influence the price per square foot for non waterfront properties, which is actually \$9926 per square foot. With an average market time of 86 days.

The sold prices have not been included to protect the privacy of the Buyers. Please call for additional information. The information sited in this ad is obtained from the MLS system, Realtors, owners, and the public records. The properties have been listed and sold by various participants in the MLS system.

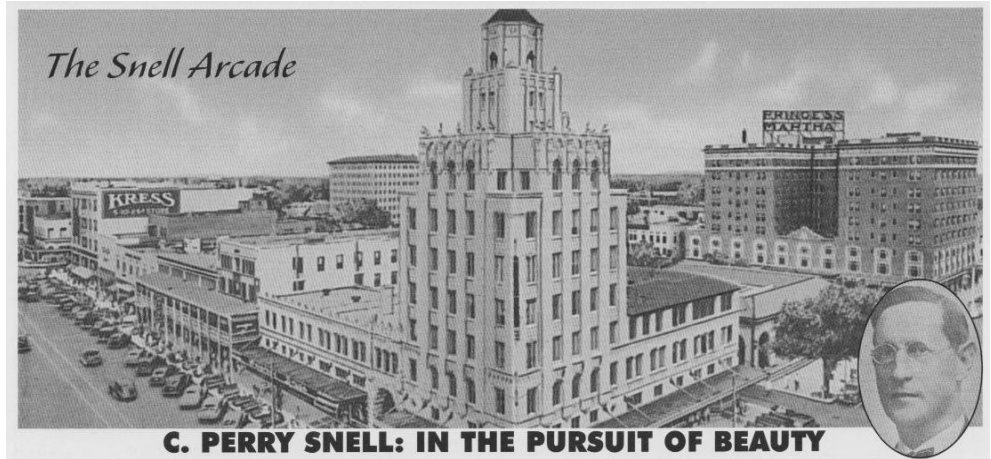


Perry Snell: In Pursuit of Beauty

*Excerpted from St. Petersburg
Downtown Newsletter, July 2010*

During the heady boom years of 1921 - 1926, St. Petersburg expanded from 11 acres to 53 acres. Right in the middle of this activity was **C. Perry Snell**, pioneer land developer and transplanted Kentucky pharmacist. He built the **Snell Arcade**, an architectural beauty at Central Avenue. He spared no expense in its design and furnishing. He used the Arcade as collateral to pursue his dream project of creating Snell Isle, which he called the "Pearl of Pinellas." The bay was dredged to create more land for his projected clubhouses, golf courses, and fine stately homes, all on a pristine, yet pricey 275-acre island. Because of expenses associated with this grand undertaking, he lost ownership of his beloved Arcade before completion of his island paradise. Noted historian and land developer Walter Fuller once quipped of Snell that he was a man who "deliberately impoverished himself in the pursuit of Beauty." And can we say that he was right? He was a Florida Dreamer . . . as we all are.

Today the **Snell Arcade** still stands proudly on Central and 4th Street, with its art deco decorations and beautiful mosaic tiles one sees by strolling through the open-air portion of the Arcade. It is home to several businesses, including A & M Watch Repair, Greenbench Flowers, G's Rotisserie Grill and Deli, and the delightful Schokolad Chocolate Factory, where the chocolates are hand made, while serving coffee and iced drinks. Next is The Cupcake Spot, where you can indulge your sweet tooth in the '50s decor shop voted 2009 Best Small Dessert of Tampa Bay. Or you can take in lunch or dinner at the India Grill. Next door, in the McCrory's building, is Lonnie's Sandwich Shop, Hair on Central, and the King & I Thai restaurant, and next in the Florida Arcade, Pilates Central and the newly opened Kalama-



C. PERRY SNELL: IN THE PURSUIT OF BEAUTY

zoo Olive Company, offering specialty infused olive oils and vinegars. Further west the next two blocks offer additional restaurants and newly opened art galleries to enjoy. **Perry** would be proud!

Habitat for Humanity Homes Going Up in Jungle Terrace

Submitted by Monica Abbott/HistoricDavista.com

Three special new homes are going up on 33rd Ave. just off Park Street North in the Jungle Terrace Neighborhood. Right now, only three foundations are in place with permit boxes showing the Habitat for Humanity logo, along side dirt mounds.



According to the construction crew, the houses are committed, "*Habitat does not even begin to build until ownership is confirmed.*"

The Habitat for Humanity Pinellas web site says: "*Building hope is about believing in a new day. Habitat for Humanity of Pinellas County is creating homeownership opportunities for people and families with the help of this community. We're building together because we believe that a community where everyone has a decent place to live is a matter of conscience and action. We've built 202 Habitat Pinellas Homes for 528 children and funded 172 homes overseas.*"

Walter Fuller Recreation News

Submitted by Chuck Boehme, CPRP

As 2010 draws to a rapid close, The Walter Fuller Staff would like to thank the JTCA for all their support this year. As always, our Neighborhood Recreation Center is here for all ages and enjoyed by all ages. Our wide range of affordable activities, special events, child care programs and rentals remain as popular as ever. Why wait for a New Year's resolution to join us in the fun. We have three new Recreation Classes beginning in November: Introduction to Basic Guitar, Advanced K-9 Training and Tennis. These three classes will join our existing list of activities including: Chess, Tae Kwon Do, Baton, Gymnastics and Zumba. So, ring in the New Year with us and call today to learn how to get started. We would love to hear from you. Our number is: (727) 893-7443.

Jungle Terrace 2011 Elections

Submitted by Tom Killian

At our January 17, 2011 meeting we will be voting for Officers and Directors to run our neighborhood association for 2011.

The following people have submitted their names for our seven leadership positions.

President Dr. Ed Carlson
Vice-President Richard Meredith
Treasurer Jill Silverstein
Secretary Eileen Dardis
Director Linda Sessions
Director Linda Mouriski
Director Yaro Markewycz

If you would like to submit your name for one of these positions please call me. Tom Killian Election Nomination Chairman 343-2041



Adult Playtime

Waking Up for Church

One Sunday morning, a mother went in to wake her son and tell him it was time to get ready for church, to which he replied, "I'm not going."

"Why not?" she asked. "I'll give you two reasons," he said. "One, they don't like me, and two, I don't like them."

His mother replied, "I'll give YOU two good reasons why YOU SHOULD go to church (1) You're 59 years old, and (2) you're the pastor!"



The Picnic

A Jewish Rabbi and a Catholic Priest met at the town's annual 4th of July picnic. Old friends, they began their usual banter. "This baked ham is really delicious," the priest teased the rabbi. "You really ought to try it. I know it's against your religion, but I can't understand why such a wonderful food should be forbidden! You don't know what you're missing. You just haven't lived until you've tried Mrs. Hall's prized Virginia Baked ham. Tell me, Rabbi, when are you going to break down and try it?"

The Rabbi looked at the priest with a big grin, and said, "At your wedding."

The Usher

An elderly woman walked into the local country church. The friendly usher greeted her at the door and helped her up the flight of steps.

"Where would you like to sit?" he asked politely.

"The front row please." she answered.

"You really don't want to do that," the usher said "the pastor is really boring."

"Do you happen to know who I am?" the woman inquired.

"No." he said.

"I'm the pastor's mother." she replied indignantly.

"Do you know who I am?" he asked.

"No." she said.

"Good." he answered.

Keith's Café & Deli ...a new Jungle Terrace Business Neighbor

Submitted by Monica Abbott, HistoricDavista.com

Ah September...school is back in session and life takes on the busy excitement of new beginnings after a long, hot summer.

New Jungle Terrace business neighbor Keith's Café and Deli can help take some of the hassle out of mealtimes and lunch boxes.

"When we first opened we were only open until 5 p.m., but after numerous requests from customers we are now open until 8 p.m. and find that our biggest orders are carry out. That's why we started offering our take home special," says Martin Riggs, Managing Partner of Keith's Café & Deli.



Martin Riggs (on right) with his wife Michelle, son Corey and brother-in-law John inside Keith's Café Deli - locally owned and operated.

looking for suggestions.)

"But all our sandwiches are great!" he continues. "We use the best ingredients we can get. Giovanni's Italian Bread and Boar's Head meats and cheeses, that's what makes all our sandwiches top notch and delicious. We don't cut corners; don't make compromises. We do



The Jungle Terrace Neighborhood welcomes new business neighbor, Keith's Café and Deli located at 3790 Tyrone Blvd., in the mini plaza with Sprint, Couture Relaunch and St. Pete Coin & Jewelry.

"We have a new "Take Home Special" offering two sandwiches with two sides for \$13 or four sandwiches with two sides of ½ pound each for \$26. The side choices are: potato or macaroni salad or cole slaw. People rave about the chicken salad sandwich in particular." (In case you're

everything we can to make ours an exceptional store." The Keith part of Keith's Café and Deli is Keith Bowling.

An expert chef, he opened Keith's Café and Deli after years of working for other restaurants. Originally Keith's Café was located across the road from the Starlite Cruises launch in South Pasadena. Business was good, but was more subject to tourist season. Then luck walked into Keith's in the form of the Sprint plaza management. They stopped in for lunch, and one thing led to another. Keith and Martin decided it would be good for business if they were located in an area less effected by seasonal traffic and voila, in March 2010 the business came to Tyrone Ave.

A steady stream of traffic flows down this road bringing a steady stream of hungry customers. Bay Pines Veterans Hospital employees and visitors are a major source of business for the café and deli. Visitors to the other shops in the mini-mall, and numerous businesses and malls along the way, also bring in business at the new location.

Plus the new location has the added attraction of courtyard dining. Next time, before or after a dog walk at Walter Fuller Park, or Abercrombie Park, you are invited to cool off under the umbrellas in the lovely outside courtyard with your pet. There is a wide variety of beverages, hot or cold deli sandwiches, including vegetarian choices, soups and salads. They also have a kids' menu for children, aged 10 and under, which includes: grilled cheese, peanut butter and jelly, hot dog, macaroni & cheese and ½ ham and Swiss sandwich.

Keith's Café and Deli offers Eat In or Take Out, Faxed Orders, Catering, Private Parties, Delivery, Courtyard Seating, and Holiday Platters.



Pet lovers are welcome to bring their pet friends along for lunch, dinner or a break after the dog park and enjoy their meal al fresco in the patio courtyard.

Keith's Café & Deli,
3790 Tyrone Blvd.,
Mon.-Fri,
10 a.m. to 8 p.m. and
Sat., 10 a.m. to 5 p.m.,
Closed Sunday,
Free Delivery on
Orders Over \$10 -
Phone: 727-384-1100
Fax: 727-384-1104

New CONA Leadership Alumni Association, JTCA's Tom Killian Co-Chair, Monica Abbot 2011 Leadership Planning Chair

CONA Leadership Chair Ingrid Comberg proudly announced the official formation of the CONA Leadership Alumni Association. To kick-off the new group, Mayor Bill Foster graciously opened the Leadership graduate reunion.

Over 500 leaders graduated since 1992, including former Mayor Rick Baker and current Council Members Wengay "Newt" Newton and Bill Dudley.

CONA Leadership Chair Ingrid Comberg said, "St. Petersburg's most important asset is its people. Citizen participation and active neighborhoods create the continuing improvement of the quality of life in our city. Thus the quality of neighborhood leadership is very important. CONA Leadership Program ensures a continuing foundation of knowledgeable and talented leaders."

The **CONA Leadership Alumni Forever** group has an impressive and wide-ranging storehouse of civic skills and community spirit to create significant contributions and positive change in these difficult times. Nearly 100 hundred graduates attended the reunion.

"I especially thank Mayor Foster, **Tom Killian, Reunion Co-Chair, Monica Abbott, CONA Leadership 2011 Planning Chair**, Tonilynn and Aaron Sharpe ... and the St. Petersburg Police Department for making this event such a success," says Ingrid.

Leadership 2011 applications must be received by November 15 to begin sessions January 10, 2011. Visit www.ConastPete.org for application and brochure, or contact CONA Leadership 2011 Planning Chair **Monica Abbott** at rabbott100@aol.com.

Sterling Enterprises Group, Inc. Investment Services

Member: NASD, SIPC

David J. Gregg MBA ChFC

Corporate Headquarters:
6827 First Avenue South
Saint Petersburg, FL. 33707
Telephone: (727) 384-5555

Mailing Address:
138 107th Avenue, Suite 335
Treasure Island, FL. 33706
Facsimile; (727) 347-3236



15 years with Corporate
ADT Security Inc.

Anthony Nespeca Residential Sales Representative

ADT Security Services
5471 West Waters Avenue
Suite 1000
Tampa, FL 33634

★ Cell: 727 224 6090

Tel: 813 806 7099
Fax: 813 806 7190
anespeca@adt.com
Lic: EF0001123
A Tyco International Company

Gruskin & LaBerge, P.A.

ELDER LAW

- Medicaid asset protection and applications
- Power of attorney
- Living wills/Health care surrogates
- Estate and Probate matters

2719 First Avenue North
St. Petersburg, FL 33713
Phone: 727-321-1918

CONSUMER LAW

- Lemon law
- Rebuilt wrecks
- Car sales fraud
- Credit report errors
- Dealer fraud



David Gruskin Suzanne LaBerge

FAMILY LAW

- Divorce
- Child custody and visitation
- Child support
- Paternity

E-Mail: David.Gruskin@verizon.net
www.gruskinandlaberge.com



WATKINS
TRADE MARK



Gourmet
Foods - Spices

Mary C. Poindexter
Independent Watkins Associate
Associate No. 069301

Personal / Home
Care Products

Phone: 727-804-4739 Email: MCPNJP09@yahoo.com

8100 35th Ave N. St. Petersburg, FL 33710-1004

www.watkinsonline.com

**GEE & SORENSEN FUNERAL HOME
& CREMATION SERVICES**



3180 30th Avenue North
St. Petersburg, FL 33713
(727) 323-5111
www.geeandsorensen.com

Your loved one never leaves our care
with our on-site crematory.

*PLEASE PATRONIZE
OUR ADVERTISERS*

PRE-CAST ORNAMENTAL CONCRETE PRODUCTS
TABLE SETS - UMBRELLAS - BIRD BATHS
STATUARY - FOUNTAINS - URNS, ETC.

Art Stone Co.

INCORPORATED

DAVID W. POLEN - SALES MANAGER

3611 - TYRONE BLVD.
ST. PETERSBURG, FL 33710

PHONE (727) 345-6733
FAX (727) 341-1793

James R. "Jim" Kennedy, Jr.



Since 1982

821-6888

856 2nd Avenue North, St. Petersburg, FL 33701

PERSONAL ATTENTION FROM AN EXPERIENCED ATTORNEY

Wills & Trusts

Family Law

Personal Injury

Auto Accident

Medical Malpractice

www.jrklaw.com

jim@jrklaw.com

FREE INITIAL CONSULTATION BY PHONE OR IN OFFICE

SUPPORT OUR JUNGLE TERRACE ADVERTISERS



providing beautiful smiles
Dewey L. Bracy, DMD

7755 38th Avenue North
St. Petersburg, FL 33710
(727) 343-0824
www.stpetesmiles.com

Affordable Mowers

KOHLER. TORO. Count on it. ECHO
Ask Any Pro!

Pressure Washer
Rentals Available

LAWN BOY
designed to fit you!

Kawasaki
LIFE THROUGH POWER

Hours M-F 7:30-5:00
Saturday 8-12

3800 58th St. North
St. Petersburg, FL 33709
Phone: (727) 347-3103
FAX: (727) 341-1413

Sales, Service & Repair

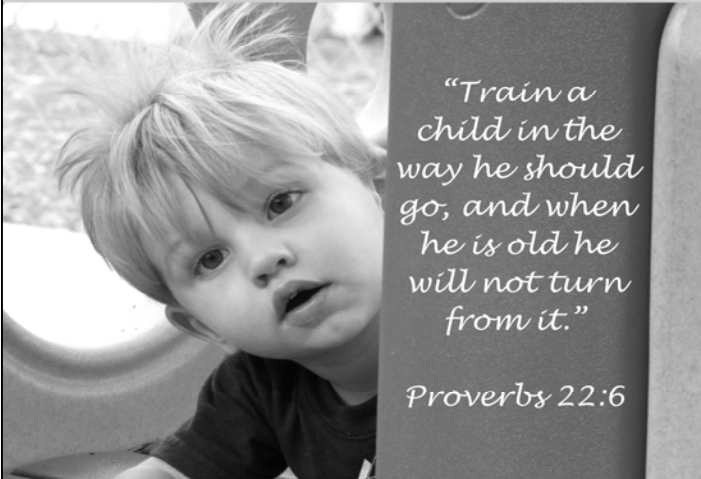
EAGLES NEST RESIDENTS, INC.

7801 34TH Ave. North
St. Petersburg, FL 33710

Phone & Fax (727) 347-7909
Resident owned Mobile Home Community
Age 55 and over RV'S WELCOME



Gulf Coast Christian Schools



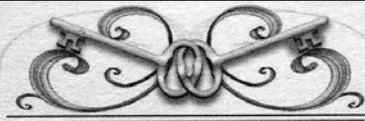
"Train a child in the way he should go, and when he is old he will not turn from it."

Proverbs 22:6



"Partnering with Parents for Kingdom Education"

Preschool ~ Elementary ~ Middle School
6355 38th Avenue North
St. Petersburg, FL 33710
727-345-3448
www.gceskids.org



FRANKS CAN FIX IT HANDYMAN SERVICE

RICHARD FRANKS

727-492-1591
rwfranks@tampabay.rr.com

8277 39th Ave. N.
St. Petersburg, Fl. 33709
NO JOB TOO SMALL

RAHEB Family Chiropractic

Dr. Jeffrey Raheb
Family Chiropractor

Wellness • Auto Accidents • Children



Se Habla Español
Insurance &
Medicare accepted

6705 -B 38th Avenue N.
St. Petersburg, FL 33710
Office: (727) 381-3456
Fax: (727) 381-3762

www.rahebchiropractic.com

SUPPORT OUR JUNGLE TERRACE ADVERTISERS



TAXI

(727) 367-3702

www.BatsTaxi.com
Fax 367-8354

P.O. Box 66330 • St. Pete Beach, FL 33736

DRIVERS NEEDED - PLEASE CALL for DETAILS

bathandbiscuitpetboutique.com



Open Six Days a week!

- Experienced and caring groomers
- Grooming Salon
- Unique Pet Items

(727) 345-8118 *New location Oct 1st!*

Gaslight Square - Center Courtyard
6798 Crosswinds Dr. Suite F.....Behind Chili's
St Petersburg, Fl. 33710

Extra Closet

A/C Storage

(727) 344-1604

A/C Mini Storage
Inside spaces
Moving supplies

Professional Pest Ctrl
U-Haul Rentals
Best prices in town

Jungle Terrace Residents

- Free month rent
- Waive admin fee
- Free lock

(Bring in Ad)



Ed

Johnny

2401 Anvil St.

St. Petersburg, FL. 33710

Just off 22nd Ave next to Peltz Shoes

Tyrone Square Mall Area



Newsletter Articles

Do you have a letter, issue, article, or recipe you would like to publish in the JTCA newsletter? We welcome letters, comments, and contributions from our neighbors. The deadline for all articles is the **24th** of the previous month before the meeting.

We would like to invite you to create articles that will inform our neighbors about items of interest relating to our neighborhood. Some suggested subjects are Pinellas Trail, Tyrone Corridor, Tyrone Square Mall, the Dog Park, Pool and Tennis Courts, Soccer League, Azalea Little League, Walter Fuller Park, the Devil Rays Complex, History of Abacrombie Park, our Linear Park 30th. Ave. N., the two schools in our area, Walter Fuller Center, Mobile home park on 34th. Ave, recipes, etc.

Photos are welcome. We can also take photos for your article. Articles and photos can be in soft-copy (preferred) or hard copy.

Send to: **Tom Killian**

tomkillian@verizon.net

Article and Advertising Acceptance Policy

Articles will not be accepted which in any way is considered to be lacking in judicious good taste or moral propriety, or which demeans any particular race, language, religion, or political view. Articles of a controversial political nature will not be accepted. Advertising of a controversial political nature will not be accepted. Advertising found to contravene truth, exaggerate the description of a product or service, or containing fraudulent statements will not be accepted. Advertising is accepted with the conditional understanding that the sponsoring company and principal beneficiary of the advertisement is ultimately responsible and liable for its content. We reserve the right to reject or revise all copy submitted, or to cancel advertising at any time. We do not sell advertising for Travel, Insurance, Financial Services or Credit Cards.

Mark Your Calendar 2011 Meeting Dates

Social 6:45 P.M. Meeting 7:00 P.M.

5 meetings per year

January 17th
 March 21st
 June 20th
 September 19th
 November 21st



Eagles Nest Resident

Lot for Sale or Rent
 for RV 55& over

Phone 617-953-2434
 or 617-846-1501

7801 34th. Ave. N., St Petersburg, FL. 33710

PLEASE PATRONIZE
 OUR ADVERTISERS

Don Can Fix It!

Yes he can!

Home Maintenance
 and Repairs

From Furniture Assembly
 to Hauling; from
 Pressure Washing to
 Yard Work - Let us whittle
 down your "Honey Do" List

Need it fixed? Give us a call!

Phone: 727-688-3946
 Email: info@doncanfixit.com
 On the web at: www.doncanfixit.com

Don Rogers
 a Jungle Terrace Resident



A Pinellas County Licensed Specialty Contractor #C-8157
 #C-9956



Brian Chenoweth
 482-1655



Licensed

Insured



Carpentry & Painting

Avon

100% Guaranteed! Since 1886



Phone: (727) 204-4964
 Email: borsari@earthlink.net

Susanne
 Borsari –
 Avon Rep.

Website:
www.youravon.com/sborsari

See What's New!

Officers and Board Members

President	Dr. Ed Carlson	347-0369
Vice President	Rich Meredith	347-2550
Interim Secretary	Eileen Dardis	343-4015
Treasurer	Jill Silverstein	289-3004
Board Member	Anita Stelljes	347-0337
Board Member	Skip Mitchell	345-4408
Board Member	Linda Sessions	343-6196

Committees

Newsletter Editor.....	Michelle Steele	
	{ jtcastele@yahoo.com }	
Traffic	Linda Mouriski	381-4845
Newsletter Committee	Tom Killian	343-2041
CONA Representative	Monica Abbott	368-6343
Easter Egg Hunt	Tom Killian	343-2041
Green Thumb	Jill Silverstein	289-3004
Webmaster.....	Bob Miller	343-4436
	{ BluegrassBob@Earthlink.net }	

Advertising Prices

Our rates are reasonable and our newsletter reaches people in your area that can purchase your service. Newsletters are sent in January, March, June, September, November.

Business Card Size Ad	\$50.00 a year
¼ Page Ad	\$130.00 a year
½ Page Ad	\$250.00 a year
Full Page Ad	\$500.00 a year

Call Bob Miller 343-4436



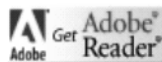
Jungle Terrace Web Site

We have a web site for the Jungle Terrace Civic Association. It is at URL www.Jungle-Terrace.org. It is available for viewing to anyone that has internet access. The web site has important organizational information, a Neighborhood map, the softcopy Newsletter and much more. The Newsletter and map are in PDF format.

If you don't have the Adobe PDF reader you can download it free at www.adobe.com Look for this button

Questions contact Webmaster Bob Miller at BluegrassBob@earthlink.net

727-343-4436



Important Phone Numbers

Assistance & Resources	211
Emergencies	911
Community Policing Officer	551-3183
Police (non-emergency)	893-7780
Sheriff (non-emergency)	582-6200
City Council Office	893-7117
Codes (get a case number)	893-7373
Elderly Information	893-7101
Garbage Collection and Rodent Control	893-7334
Graffiti	893-7394
Library - St. Petersburg College	341-7199
Mayor's Action Center	893-7111
Mosquito Control	464-7503
PARC (Pinellas Assoc. for Retarded Children)	345-9111
Public Service Rep. (Susan Fuchs)	893-4137
Schools: 74th St. Elementary	893-2120
Azalea Elementary	893-2187
Azalea Middle	893-2606
SPCA	586-3591
Street Lights (Progress Energy)	1-800-228-8485
Tip Line	892-5000
Water & Sewer Problems	893-7261
Walter Fuller Center	893-7443
Walter Fuller Pool	893-7636
Free smoke detector or home inspection	893-7233
Congressman Bill Young	893-3191
Senator Nelson - Orlando Office	1-407-872-7161
Senator Martinez - " "	1-407-254-2573

Jungle Terrace

Internet Discussion Group

If you have a computer and want to find out what is happening today in your area, **please sign up.**

The Jungle Terrace Civic Association has an Internet Discussion Group on which you can catch up on the latest "JT Happenings". This could range from requests for recipes, special events, lost pets, to crime prevention. Or if you need to request a resource to assist in your project.

To join the Jungle Terrace Discussion group, go to http://groups.Yahoo.com/groups/jungle_terrace or go to the Jungle Terrace web site at www.jungle-terrace.org for a link to the discussion list and how to join.

For additional assistance please contact
Bob Miller 343-4436
bluegrassbob@earthlink.net



**POLICE - FIRE
AMBULANCE**



**Non-Emergency
893-7780
EMERGENCY
911**



Jungle Terrace Civic Association
c/o Bob Miller
8215 30th Ave. N.
St. Petersburg, FL 33710

NONPROFIT ORG
U.S. POSTAGE PAID
St. Petersburg, FL
Permit No. 1084

Or Current Resident

UGP Produce

Open 7 days a week.

8:00am - 7:00 pm

We accept ABT



Banana's \$.29/lb



Corn 5 / 1\$

Just off 38th Avenue at the Walmart entrance.

727-439-1564

COPYRIGHT NOTICE.

Clipart used in articles in this publication is from MS Publisher 2007 and the MS Office Online, Clipart and Media Site.
Copyright © 2003 Microsoft Corporation, One Microsoft Way, Redmond, Washington 98052-6399 U.S.A. All rights reserved.