

Circulation 700+

Boca Chica Bay



Jungle Terrace Civic Association

Awarded 2004 Newsletter of the Year

In this issue

| | |
|------------------------------|----|
| Advertising Prices..... | 19 |
| Committees..... | 19 |
| Fire / Police Numbers..... | 20 |
| Important Phone Numbers..... | 18 |
| JTCA Discussion List..... | 12 |
| JTCA Meeting Schedule..... | 19 |
| JTCA Web Site..... | 15 |
| Membership Dues | 5 |
| Monthly Meeting Minutes..... | 2 |
| Newsletter Articles..... | 18 |
| Officers/Board Members..... | 19 |

NEWSLETTER PRINTED BY



PRINTING • COPYING • DIGITAL NETWORK

4855 Park St. N.

727-545-9000

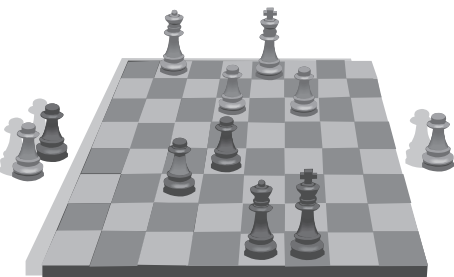
The next JTCA Meeting will be on
Monday, September 15th
 Meeting is 7:00 PM Sharp, held at the
Walter Fuller Youth Center, 7891 26th Avenue North

Meeting Agenda

- Community Service Officer Patrick McGovern reports
- Political Night, Candidates from various offices

◀ ◀ ◀ DATES TO REMEMBER ▶ ▶ ▶

Jungle Terrace Civic Association
Starts Chess Classes
 at the Walter Fuller
 Youth
 Center



see page 5

FREE
 Have your
HOUSE NUMBER
 painted on your curb
 or driveway

Contact Tom Killian 343-2041
 Pete Brown 343-7882

Annual Membership Dues Due in January



MINUTES



Jungle Terrace Civic Association
Minutes of Membership Meeting
July 21, 2008

We held our regular membership meeting at Tropicana Field. The meeting started at 6:00.

It was moved and seconded to accept the minutes of the May, 2008 meeting as published in the May/June 2008 newsletter. It passed unanimously.

Pete Brown gave the treasurer's report for April and May. It was moved and seconded to accept the report.

David Baggs & Chad Collard from the Ray's Group Sales Dept. were our featured speakers.

They Stressed that Mayor Baker endorsed a new ball park for the Ray's.

Reasons for needing a new stadium were:

1. Not up to same standards as other ballparks in the U.S.
2. In a June game between the Ray's and White Sox, there was an incident where when the ball was hit, it hit against the ceiling scaffolding and we almost lost the game.
3. It is very costly to clean the stadium.

It was also stated that Jeff Lyash of Progress Energy is heading up a coalition of 8 people to come up with a plan for the new stadium.

When the meeting ended at 7:00 p.m., we were able to see an exciting game between the Rays and Oakland A's that we won 4-0. 40 JTCA members attended the baseball game. In my opinion, we had the best seats in the house. Thank you, Tom Killian.

Prez Sez!

Due to all the rain, mosquitoes have been happily swarming around my house. When I spoke with Mosquito Control, I requested they spray all areas of Jungle Terrace. They sprayed early Tuesday morning 8/11. The Control left some information that may be helpful to prevent the 'little flying vampires from breeding.'

- Empty containers that may hold water. Mosquitoes can breed in very small containers, pools, tires, cans.
- Some plants retain water, bromeliads. If possible remove the water or change it every three days.
- Repair leaky faucets.

Do you know your watering rules?

Janet

Annual Membership Dues Due in January

If you wish to join the Jungle Terrace Civic Association, please take a moment to fill out this membership form and bring it to the next meeting or send your dues to the address below. Please include **\$15.00** - per household for membership, due in January of each year. If you can donate more than the membership dues, it would be appreciated. We are a Nonprofit 501(c)3 Tax Exempt Civic Association.

NAME: _____

ADDRESS: _____ ZIP _____

PHONE: _____

E-MAIL: _____

Mail to: Pete Brown, Treasurer

3030 Boca Ciega Dr. N., St. Petersburg, FL 33710 Phone 343-7882

Dues: **\$15.00** Donation: _____

Please make checks payable to: **Jungle Terrace Civic Association.**

Restrictions on Water Use in St. Petersburg

St. Petersburg Continues to Enforce 1-Day-Per-Week Water Restrictions

The SWFWMD has extended the current Water Shortage Order (07-02), which restricts watering to one-day-per-week through September 30 unless changed by the SWFWMD. Despite recent rain, the District continues to experience depressed hydrologic conditions and regional water supplies have not returned to pre-drought conditions.



Watering with potable (city) water, private well water and private connection to surface water sources (lakes, ponds, etc.) is restricted to once a week, according to the schedule below. This declaration does NOT affect reclaimed water users, although voluntary compliance with the schedule below is requested.

Watering in St. Petersburg is permitted on Saturday for **even** addresses and Sunday for **odd** addresses. Allowable hours are between the hours of 5 to 9 a.m. and/or 7 to 11 p.m. The two time periods are to allow for adequate watering for large properties, when needed, while not permitting watering of the same area twice within the same day.

- Potable Water 1 day per week
- Private Well Water and Surface Water 1 day per week
- Reclaimed Water 3 days per week voluntary
- Any zone of a property may be watered only once on allowable day

Irrigation is allowed from 5 to 9 a.m. and/or from 7 to 11 p.m.

- House numbers ending in an even number or the letters A through M may irrigate on Saturday only.

- House numbers ending in an odd number, or the

letters N through Z, or at locations with no address may irrigate on Sunday only.

Remember to check your rain sensor to assure that it is functioning properly. If you do not have a rain sensor, residents may obtain one **free of charge** by visiting the Water Resources Department at 1635 Third Avenue North between 7:30 a.m. and 4:30 p.m.

For more information on current water restrictions call our automated Water Watch Info Line 92-5300. Failure to comply with current water restrictions is a municipal ordinance violation and deemed a Class II offense subject to a \$175 fine plus court costs. Court costs range from \$13 for uncontested violations to \$58 for contested violations. St. Petersburg initially issues warnings to residents violating outdoor watering restrictions. A second violation is subject to the fine plus court costs. Subsequent violations will be subject to fines and fees assessed by the court up to a maximum fine of \$500 plus court costs.

Temporary Variance for New Plantings:

If the watering of newly-installed turf and plants requires alteration from the watering restrictions, a temporary (30-day) variance is necessary. **This variance must be obtained from the St. Petersburg Water Resources Department and requires that appropriate documentation accompany the customer's request.**

To obtain a 30-day variance to irrigate new sod and landscape plants call 892-5020 or email WRDCustomerService@stpete.org. Please speak slowly on the phone line and provide your name, complete address and phone number. Only one variance is allowed within a six month period. No extensions will be granted.

Well Registration

St. Petersburg is requesting that citizens utilizing a private well for irrigation purposes register their well with the Water Resources Department. This will aid the Department in identifying locations and usage of private wells, help identify possible locations for future private wells, and assist water restriction enforcement staff in accurate reporting.

Gardening Tips

by Dean Hall, President
Floridian Pest & Turf Management
September 2008

Palm Trees Are Dying At An Alarming Rate. These diseases destroy quickly. Sometimes overnight a palm trees appearance will change.



Trunk Rot

Trunk rot is caused by a fungus. Due to this disease, the palm trunk either collapses on itself or the canopy suddenly falls off the trunk, both without warning.

The palm canopy often appears healthy prior to collapse. There may be no symptoms prior to collapse of the palm. Only fresh trunk wounds will become infected so disease management includes limiting man-made wounds to the palm trunk.

Fusarium Wilt

A fungus which causes leaf symptoms that includes one side of the frond dying while the other side remains green. This is often accompanied by a reddish-brown or dark-brown streak on the shaft of the palm. Eventually, the entire leaf dies. The disease symptoms normally appear first on the oldest leaves, and then progressively move upward in the canopy until the palm is killed.

Texas Phoenix Palm Decline

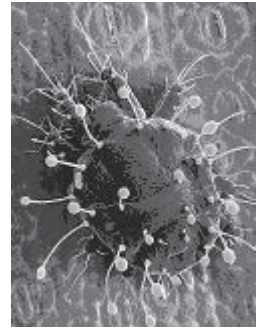
Texas Phoenix Palm Decline is caused by bacteria and is a systemic disease probably transmitted by an insect. Palms with greater than 25% discoloration or a dead bud due to this disease should be removed immediately. Management includes trunk injections of oxytetracycline HCl (OTC) every four months, and planting of palm species that are not hosts of this disease.

Ganoderma Butt Rot

Ganoderma Butt Rot is caused by a fungus. This fungus degrades or rots the lower 4-5 feet of the trunk. All palms are considered host of this fungus. Symptoms may include wilting or a general decline. The disease is confirmed by observing a hard, shelf-like structure that will be attached to the lower 4-5 feet of the palm trunk. There are currently no cultural or chemical controls for preventing the disease or for curing the disease once the palm is infected. A palm should be removed as soon as possible.

Red Palm Mite

Red Palm Mite is a leaf damaging mite which attacks coconut, areca palm, and date palms. Red mites are usually found on the underside of leaves and cause localized yellowing of the leaves followed by tissue necrosis.



Lethal Yellowing

Lethal Yellowing is caused by bacteria and is spread by a piercing and sucking insect. At least 36 palm species have been documented with Lethal Yellowing, but the Coconut Palm is most often associated with this disease. The symptom on mature palms is a premature drop of most or all fruits followed by a yellowing of the foliage. Chemical control is achieved by application of the antibiotic to palms by liquid injection into the trunk.

Call our office as soon as you notice problems with your palms and we will develop a program that best suits your individual palm tree needs.

EAGLES NEST RESIDENTS, INC.

7801 34TH Ave. North
St. Petersburg, FL 33710

Phone & Fax (727) 347-7909
Resident owned Mobile Home Community
Age 55 and over RV'S WELCOME

BILL GRAMLEY'S AUTO REPAIR CENTER

quality work at a fair price

FOREIGN & DOMESTIC

Specializing in:

Rolls Royce • Land Rover • SAAB

Jaguar • Mercedes Benz • Infiniti

Lexus • BMW • Toyota • Volvo

Jeep • Audi • VW • Hybrids

FREE

A/C Check and 21-Point Safety Check

CALL FOR AN APPOINTMENT

727-347-7676

FREE PICK-UP & DELIVERY

3984 Tyrone Boulevard, St. Petersburg, FL 33709

www.gramleysautomotive.com



07' AWARD WINNER
Previous Awards
2006, 2005, 2004

MV15241

Did you hear about the guy whose whole left side was cut off? He's all right now.

Free Chess Classes Offered at Walter Fuller Center

Chess instructor Yaro Markewycz (L) and Tom Killian (R) Chess Committee Chairman instruct two young students on chess moves. Free Chess classes are offered for beginning and intermediary levels. The classes start Tuesday September 2nd. 6:30PM to 8:30PM Walter Fuller Center 7891 26th. Avenue N. Call 893-7443 to reserve a seat.





KC Jones

Broker-Vice President

Realty Executives
10209 Gulf Blvd.
Treasure Isle, FL 33706

Cell: 727-458-5263
KC@ KCJones.info.



Paradise Island vintage home. 4 bedrooms 3 baths with 2403 htd. sq. feet. 98 x 115 cul de sac lot. Fireplace, family room and Florida room. Original condition with great potential. 2 car + garage. \$850,000.



Gulfport Fixer upper's 2 br 1 bath with custom tile work, garage and paved patio. Needs a roof and minor repairs. \$125,000.



Gulfport steps from Clam Bayou. 3 br. 1 ba. With 2 car carport. Handyman special. Needs roof, air, etc. \$89,000.00

Great Tyrone Condo

2 bedroom 1 bath with 1135 htd. SF. Estate property being sold furnished. Great Tyrone area, covered carport. Reduced to sell at \$76,000.00.



Delightful South Pasadena 5 bedroom 5.1 bath grand estate with 3768 Htd. SF. 150 x 133 lot with new 2 car garage. New tile roof, windows, electrical, updated kitchen and lanai. Every bedroom has it's own bath. A beauty Reduced to \$675,000.



Recent sales in Jungle Terrace From 7/22 to date

| Address | BR/BA | Sq. footage | Price | Days on Market |
|-----------------|-------|-------------|--------------|----------------|
| 7555 37 Ave N | 4/2 | 1680 | \$99,900.00 | 205 |
| 8259 33 Ave N. | 2/2 | 1627 | \$134,900.00 | 180 |
| 8047 33 Ave N. | 3/2 | 1149 | \$145,000.00 | 243 |
| 4160 83 Ave N. | 3/2 | 1481 | \$154,900.00 | 17 |
| 8195 26 Ave N. | 3/2 | 1495 | \$191,225.00 | 120 |
| 4101 83 St N. | 3/2 | 1639 | \$199,900.00 | 69 |
| 3200 Park St N. | 3/2 | 2611 | \$279,000.00 | 146 |

7 homes sold during the above period of time in the Jungle area. The average square footage was 1669 and the price per square foot was \$97.06. The average market time was 140 days.

The sold prices have not been included to protect the privacy of the Buyers. Please call for additional information. The information sited in this ad is obtained from the MLS system, Realtors, owners, and the public records. The properties have been listed and sold by various participants in the MLS system.

Realty Executives your Local Real Estate Company

727-458-5263



Petz Pix 



**S
P
O
T
T
I
E**

Spottie's human is Janet Herring. Spottie tolerates Janet dressing her up. It makes her happy.

Send in your favorite picture of your best friend, be it 2 or 4 legged. Please submit picture in .jpeg format along with caption to jtcastele@yahoo.com and we'll include it in your next newsletter.

Street Closure Permits

Want to have a block party? If you are planning to have the fun on our streets, then you need to fill out a street closure application. To find the information on "Street Closure Permits" go to www.Jungle-Terrace.org, "Local Government Links" section, and look in the "St Petersburg" box for the link.



***PLEASE PATRONIZE
OUR ADVERTISERS***

cutters

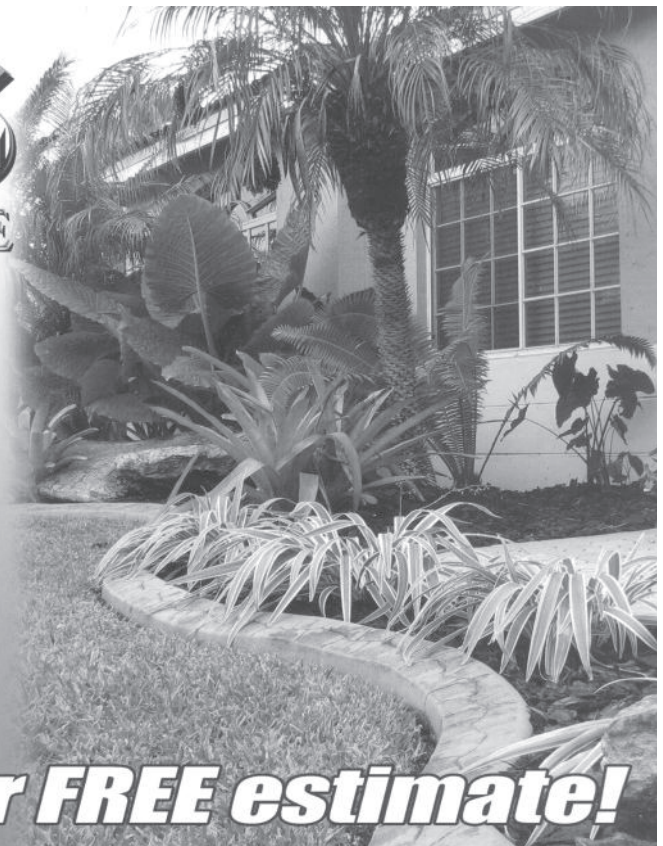
LAWN CARE

727-204-0981

- Complete lawn care catered to your needs
- Cutting, Edging, Trimming and Blowing
- Landscaping ● Sod Installation
- Irrigation Systems ● Pavers
- Mulch and Stone
- Vinyl and Wood Fence Installation
- Tear Outs and Clean Ups ● Hauling
- Weeding and Weed Control
- Hedge Trimming ● Tree Trimming

Residential & Commercial

Call today for your FREE estimate!



July 21, 2008 meeting at Tropicana Field



The July meeting was held at Tropicana Field shortly after the Rays announced that they would not seek a vote on the new waterfront ballpark as part of the November election. The pressure to build a giant new stadium on our waterfront with our money has been eased but do not think this is over. The Rays representatives said that a committee of citizens would be formed to make a recommendation for a new ballpark. The committee, yet to be chosen, would be members of the community, would not include members of the Rays ownership or management but must, "like baseball."

The Rays are winning, the crowds are up and the parking at the Trop is a problem. Imagine the nightmare if the games were at the Al Lang site without on-site parking.

We will have to wait for the committee to make their recommendation. I will go on record as being 100% in support of a new stadium as long as the Rays buy the land and build the stadium **WITH THEIR OWN MONEY, NO public land and NO public money involved.**



The empty seat was left by Tom Killian when he slipped out before the game was over.

PETS IN THE PARK

Saturday, October 25 at 10:00 am

Walter Fuller Park 7891 26th Ave N.(in back of center)

Gussy up your two, four legged babies to participate in the 2008 'Pets in the Park' celebration.

Prizes will be given for

- ♣ Best dressed
- ♣ Best behaved
- ♣ Most resembles human parent
- ♣ Best Halloween Costume

...and much more!



Community Service

Help clean up St Pete and join us in our effort to beautify our neighborhoods and city. Everyone can make a difference by joining together to help in the worthy event.

The Bee Caretagious project.

September 20th, 7 a.m. to 2 p.m.

Meet at Dell Holmes Park

2741 20th St. S. St. Petersburg

You can visit their website at www.stpete.org/neighborhoods/ or call (727) 893-4110



Providing Beautiful Smiles!

General & Cosmetic Dentistry

Dewey L. Bracy, DMD, PA

7755 38th Ave. N., St. Petersburg 343-0824



- 19 Years in the Bay Area
- Always Welcoming New Patients

LAWN & HAUL

Property Services



Dave Dardano, Owner

- Mowing / Edging / Brush Removal
- Yard Cleanup Mulch
- Shrub / Hedge / Tree Trimming

Located in the Jungle Neighborhood

10% OFF with this Ad

Free Estimates

Residential (727) 215-2229 Senior Discount
Commercial

A calendar's days are numbered.

Gruskin & LaBerge, P.A.

ELDER LAW

- Medicaid asset protection and applications
- Power of attorney
- Living wills/Health care surrogates
- Estate and Probate matters

2719 First Avenue North
St. Petersburg, FL 33713
Phone: 727-321-1918

CONSUMER LAW

- Lemon law
- Rebuilt wrecks
- Car sales fraud
- Credit report errors
- Dealer fraud



David Gruskin Suzanne LaBerge

FAMILY LAW

- Divorce
- Child custody and visitation
- Child support
- Paternity

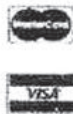
E-Mail: David.Gruskin@verizon.net
www.gruskinandlaberge.com

Serenity Pools, Inc

Specializing in Quality Remodels and New Construction



Kim Bingham
(727) 224-9961



Rick & Kim Bingham
Owners/Operators
State Lic. #CPC1456564

Office: (727) 345-8996
Fax: (727) 343-2295



727-345-3448
www.gccskids.org

6355 38th Ave. North St. Petersburg, FL 33710





TAXI

(727) 367-3702
 www.BatsTaxi.com
 Fax 367-8354
 P.O. Box 66330 • St. Pete Beach, FL 33736

DRIVERS NEEDED - PLEASE CALL for DETAILS

great beginning
nail and hair designs
 “Celebrating years of great beginnings
 and happy endings”
4101 5TH AVENUE NORTH
ST. PETERSBURG, FLORIDA 33713
TELEPHONE 327-1785
 Also specializing in:
 • pink and white sculptured nails

UGP Produce
Banana's *Tomatoe's*
\$.29/lb *\$.79/lb*



Open 7 days a week.
8:00am - 7:00 pm
 Just off 38th Avenue at the Walmart entrance.
727-439-1564

SUDOKU

| | | | | | | | | |
|---|---|---|---|---|---|---|---|---|
| 5 | 9 | 3 | 8 | 7 | 6 | 1 | 4 | 2 |
| 2 | 7 | 6 | 4 | 3 | 1 | 5 | 9 | 8 |
| 8 | 1 | 4 | 2 | 9 | 5 | 7 | 6 | 3 |
| 1 | 4 | 8 | 5 | 6 | 3 | 2 | 7 | 9 |
| 7 | 6 | 5 | 1 | 2 | 9 | 8 | 3 | 4 |
| 9 | 3 | 2 | 7 | 8 | 4 | 6 | 1 | 5 |
| 3 | 5 | 7 | 9 | 1 | 8 | 4 | 2 | 6 |
| 6 | 8 | 1 | 3 | 4 | 2 | 9 | 5 | 7 |
| 4 | 2 | 9 | 6 | 5 | 7 | 3 | 8 | 1 |

Medium Sudoku Puzzle #2—answers to last Jul/Aug puzzle

Here is another one...try it!!

| | | | | | | | | |
|---|---|---|---|---|---|--|---|---|
| | | | 2 | 7 | 9 | | | |
| 5 | | | | | | | | 7 |
| | 4 | | | 3 | | | 2 | |
| 4 | | | | 5 | | | | 8 |
| | 6 | 8 | | | | | 3 | 5 |
| 7 | | | | 6 | | | | 9 |
| | 5 | | | 4 | | | 9 | |
| 3 | | | | | | | | 2 |
| | | | 8 | 1 | 5 | | | |

Medium Sudoku Puzzle #3—answers in next issue



NOT STRAY BUT HOMELESS



There are so many cats and kittens that have been abandoned by their owners that are in need of a forever 'inside' home.

They are searching for the families that will adopt or foster them until they find their families. The reward is 'unconditional love'. (The cats should have their new families trained within a few weeks.)

Our homeless pregnant 'mamas' are the ones of most concern.

If you have room in your heart and home to foster or adopt these precious 'delights', please call Ingrid, 821-2192, Janet, 709-7210 or Liz at Save our Strays, 481-5262.



DAN'S HAULING, INC.

Dan Lombardi
(727) 341-1135 -Fax 381-1114
Mary Lombardi / Treasurer
8110 30th Ave North
St. Petersburg, FL 33710

- Drop Off Trailers
- 12 Cubic Yards
- Same Day Service
- Free Estimates



Bobcat Services

- Construction Sites
- Demo Work
- Garage Clean-Outs
- Yard Clean-Ups



Prudential Tropical Realty

Christina Reardon Delivering rock solid service.

I can help make your real estate goals a reality.
For more information with no obligation, please call

727-742-8677 or e-mail
Trkr@tampabay.rr.com



6800 Gulf Blvd.
St Pete Beach, Fl.
Fax 727-368-0600

Don Can Fix It!

Yes he can!

Home Maintenance
and Repairs

From Furniture Assembly
to Hauling; from
Pressure Washing to
Yard Work - Let us whittle
down your "Honey Do" List

Need it fixed? Give us a call!

Phone: 727-688-3946
Email: info@doncanfixit.com
On the web at: www.doncanfixit.com

Don Rogers
a Jungle Terrace Resident



ALPHA

STONE WORKS, INC.
Installations Of Exceptional Beauty

5301 95TH ST N. ST. PETERSBURG, FL 33708 (727) 744-0031



EXCLUSIVE DEALS FOR MY NEIGHBORS IN THE JUNGLE AREA FROM YOUR LOCAL GRANITE & NATURAL STONE FABRICATOR

— ALPHA STONE WORKS —

- * Natural beauty that adds value to your home
- * Custom design, fabrication & installation of granite, marble, onyx & natural stone
- * Cutting/serving block included with every complete kitchen job.
- * \$49.00 sq/ft installed for any level one stone selection
- * Free stainless steel sink with full kitchen countertops (Min 55 sq/ft)
- * Prompt professional service
- * FULLY LICENSED & INSURED #C-10095

CALL TODAY FOR YOUR FREE IN HOME ESTIMATE WITH DESIGN IDEAS & STONE SAMPLES

*Contact Chris @ (727) 744- 0031
alpha_stoneworks@yahoo.com



Your Home Companion

Professional. Dependable. Compassionate.

Providing companionship and non-medical services to adults, at-risk elders & the physically challenged to remain at home comfortably & independently.



You may contact us via phone (727)388-1698, fax (727)388-6679 or online at www.yourhomecompanion.com.

HANDYMAN

Home Improvements
Carpentry, Tiling, Painting
General Repairs, Yard Projects



Local resident * Experienced * References

Doug DeJohn (727)417-8977



"Call Us & Relax"



FLORIDIAN

PEST & TURF MANAGEMENT, INC.

(727) 344-2407
(800) 799-2407

Free Lawn or Home Pest Analysis

Over 20 Years Experience Keeping Homes & Lawns Pest Free

State Certified
License #5391



- Insect Control
- Weed Control
- Fertilizing
- Lawn Spraying
- General Household Pests



www.flbugs.com



RAHEB Family Chiropractic

Dr. Jeffrey Raheb

Family Chiropractor

Wellness • Auto Accidents • Children



Se Habla Español
Insurance &
Medicare accepted

6705 -B 38th Avenue N.
St. Petersburg, FL 33710
Office: (727) 381-3456
Fax: (727) 381-3762

www.rahebchiropractic.com

ERNIE MARTIN PLUMBING

REPAIR SPECIALIST

- Faucets
- Toilets
- Water Heaters
- Sewer & Drain Cleaning
- Leak Repair

525-3952

Is your "Christmas Card Photo" done yet? Ask about our \$199 special!



Simple Treasures Photography by Claire



Portraits, Families, Children, Pregnancy, Artistic
Specializing in beach and outdoor photography

www.Simple-Treasures.net

(727) 502-7269

claire@simple-treasures.net



Science Center Of Pinellas County, Inc.

7701 22nd Avenue North, St. Petersburg 33710
Phone: (727) 384-0027

www.sciencecenterofpinellas.com

Monday-Friday 9 a.m.-4 p.m., Saturday 10 a.m.-4 p.m.

Saturdays \$5/Person, Special Shows & Exhibits
for the whole family!

Classes & Workshops for Pre-K through 12th Grade!



CiCi's Cleaning Service Residential Cleaning

Diane Weigandt
Owner

Dependable, Efficient, Free Estimates
Weekly, Bi-Weekly, Monthly

(727) 742-3786
Insured



**3264 Tyrone Blvd., St. Petersburg
727-341-0852**

UNDER NEW OWNERSHIP

**2.00 Off Any
Wash**

Expires 12/31/08
One Coupon Per Visit

**Free Tire
Shine**

With Any Wash
Expires 12/31/08
One Coupon Per Visit

Shampoo Floor Mats Front & Back

With Any Wash

4.00

Expires 12/31/08
One Coupon Per Visit

- ☑ Energy Efficient
- ☑ Hurricane Resistant



**Construction & Remodeling
727-252-8749**

Florida Green Home Builder . Com

Floridian Estates, Ilc ♦ Licensed & Insured ♦ CBC1255001 ♦ Saint Petersburg, Florida




ROCCO DESIMONE
821-9973



"HAVE TOOLS, WILL TRAVEL"
Carpentry Service

Rotted Wood
Soffit & Fascia
Decks, Etc.

22 yrs in St Pete
Pinellas County Licensing Board #C5754



WATKINS
TRADE MARK

Mary C. Poindexter
Independent Watkins Associate
Associate No. 069301

Gourmet Foods - Spices *Personal / Home Care Products*

Phone: 727-804-4739 Fax: 727-343-4733 Email: MCPNJP@verizon.net



8100 35th Ave N • St. Petersburg, FL 33710-1004





www.WatkinsOnline.com/maryp

ZODIAC REPORT

Astrological Sign: **September 2008**
Virgo (August 22 to September 22)
Libra (September 23- October 22)



| | | | |
|-------------|---------------------|------------|--|
| 1st | Labor Day | | |
| 15th | Harvest Moon | | |
| 22nd | Autum Begins | 11:44 a.m. | |








| | | | |
|---|---------------|------|------------|
|  | First Quarter | 7th | 10:04 a.m. |
|  | Full Moon | 15th | 5:13 a.m. |
|  | Last Quarter | 22nd | 1:04 a.m. |
|  | New Moon | 29th | 4:12 a.m. |

Astrological Sign: **October 2008**
Libra (September 23- October 22)
Scorpio (October 23- November 22)

| | | | |
|-------------|---------------------|--|--|
| 9th | Yom Kipper | | |
| 13th | Columbus Day | | |
| 31st | Halloween | | |

| | | | |
|---|---------------|------|-----------|
|  | First Quarter | 7th | 5:04 a.m. |
|  | Full Moon | 14th | 4:02 p.m. |
|  | Last Quarter | 21st | 7:55 a.m. |
|  | New Moon | 28th | 7:14 p.m. |

**PLEASE PATRONIZE
OUR ADVERTISERS**

**SUPPORT OUR JUNGLE TERRACE
ADVERTISERS**

PRE-CAST ORNAMENTAL CONCRETE PRODUCTS
TABLE SETS - UMBRELLAS - BIRD BATHS
STATUARY - FOUNTAINS - URNS, ETC.

Art Stone Co.
INCORPORATED

DAVID W. POLEN - SALES MANAGER

3611 - TYRONE BLVD. PHONE (727) 345-6733
ST. PETERSBURG, FL 33710 FAX (727) 341-1793



MARY KAY®

Barbara A. Paul
Independent Beauty Consultant

6754 36 Avenue North
St. Petersburg, FL 33710
727 347-7822
727 580-7822
bpaul3@marykay.com
www.marykay.com/bpaul3

Repair Service Free Estimates

Pressure Washer Rental Tools/Equipment Rental

AFFORDABLE MOWERS

Quality Work & Reasonable Prices
(727) 347-3103

Bill Domante, Owner

3800 58th Street North
St. Petersburg, FL 33709




Cell: (727) 204-6112
Phone: (727) 345-0242
Fax: (727) 344-3261
Toll Free: (800) 700-1412

Debi Jones

6620 1st Ave. So.
St. Petersburg, FL 33707

Home-Auto-Business-Life
djones@insuranceresourcesllc.com
www.insuranceresourcesllc.com

Got Poop? We Scoop!



Leave the disgusting job to us!

**Tired of stepping out and stepping in it?
You don't have to "doo" that stinky job any more!**

Call the "Entre-manure":

1-800-PET-BUTLER

7 3 8 - 2 8 8 5



Protect your
kids, pets,
yard & shoes
with us!

- Any frequency: 1x, 2x's, 3x's per week, Every-other-week & One-timers
- Professional, Uniformed & Hassle-Free
- Odor Eliminator Spray, Lawn Disinfectants & Repair, Patio Cleanups, Area Deterrents, Litterbox Services & Gift Certificates Available

*Over 35 million piles scooped since 1988
has made us #1 in the "#2" business!*



One FREE Weekly Cleanup

After 1st month of service with this "poop-on!"
Mention code 327

www.petbutler.com

You enjoy writing, but do you want to get published?

Register for WordSmitten's *Writing Workshop Series* on the legendary Gulf Coast.

Open to beginning and advanced writers.

Shape your creative ideas into a short story, novel, memoir, or magazine article, and get that manuscript published.

Register for informative Saturday workshops at www.wordsmitten.com, or



Who are the instructors at these fun Saturday writing workshops?

Editors, Authors, Literary Agents, and Publishers, including:
Jane Friedman, editorial director of *Writer's Digest Books*
Roy Peter Clark, VP of journalism's notable Poynter Institute and the author of the classic book, *Writing Tools*, along with former **Simon & Schuster** editor **Marcela Landres**.

contact us for **convenient Webinars**. Our Web Seminar Workshops are held on days and times that fit your schedule, in the comfort of your home. *Join us online, in your Jammies!*

WordSmitten :: *the people, the books, and the business of writing*
Call 727-409-0500 { Visit us online at www.WordSmitten.com }

HATE GYMS?

You will LOVE Shapemaster!

Our revolutionary power assisted exercise system makes shaping up easy.

- Lose inches!
- Gain energy!
- Shape up!
- Feel good!
- 30 minute program!
- Come as you are!

Also featuring Neuromuscular Massage and Revolutionary Power Plate pro5 Airdaptive!

shapemaster®
 EXERCISE FOR EVERY BODY

FLORIDA

Call for your **FREE Trial**
(727) 347-4000

40 66th Street North • St. Petersburg
 (Corner of Central Ave. and 66th St. N. in the Nature's Finest Shopping Center)



Featuring the Revolutionary Power Plate pro5 Airdaptive

Newsletter Articles

Do you have a letter, issue, article, or recipe you would like to publish in the JTCA newsletter? We welcome letters, comments, and contributions from our neighbors.

We would like to invite you to create articles that will inform our neighbors about items of interest relating to our neighborhood. Some suggested subjects are Pinellas Trail, Tyrone Corridor, Tyrone Square Mall, the Dog Park, Pool and Tennis Courts, Soccer League, Azalea Little League, Walter Fuller Park, the Devil Rays Complex, History of Abacrombie Park, our Linear Park 30th. Ave. N., the two schools in our area, Walter Fuller Center, Mobile home park on 34th. Ave., recipes, etc.

Photos are welcome. We can also take photos for your article. Articles and photos can be in soft-copy (preferred) or hard copy.

Send to: **Michelle Steele**

jtcastele@yahoo.com

Article and Advertising Acceptance Policy

Articles will not be accepted which in any way is considered to be lacking in judicious good taste or moral propriety, or which demeans any particular race, language, religion, or political view. Articles of a controversial political nature will not be accepted. Advertising of a controversial political nature will not be accepted. Advertising found to contravene truth, exaggerate the description of a product or service, or containing fraudulent statements will not be accepted. Advertising is accepted with the conditional understanding that the sponsoring company and principal beneficiary of the advertisement is ultimately responsible and liable for its content. We reserve the right to reject or revise all copy submitted, or to cancel advertising at any time.

Mark Your Calendar 2008 Meeting Dates

Social 6:45 P.M. Meeting 7:00 P.M.

6 Bi-monthly meetings per year

January 21st
 March 17th
 May 19th
 July 21st at
Tropicana Field
 September 15th
 November 17th



**PLEASE PATRONIZE
 OUR ADVERTISERS**



MILLER
 CHIROPRACTIC & WELLNESS

Jason D. Miller, D.C.
 Chiropractic Physician

1228 66th Street North • St. Petersburg, Florida 33710
 Phone (727) 384-6168 • Email millerchiro@verizon.net



Discovery Learning Center AT PARC

Dedicated to the care and education of children of all abilities since 1953

Credentialed Teachers / Experienced staff
 Nurse on staff • Small Classes • Computer Lab
 Toilet Training • Independent self-care skills • Socialization
 Trained to work with special needs
 On-site therapy (PT, OT, Speech)
 Community-funded tuition for those who qualify
 Ask about our **FREE developmental screenings**
 and in-home early intervention service

M-F 7am - 6pm
 Lic. #C680083
 We accept CCC
 Infants to 5 yrs

Quality Child Care / Early Intervention / Pre-K
 3100 75th St. N. 727-345-9111
www.discoverylearning.org



**New Look!
 Come & see us!!**

- Same experienced groomers
- Grooming Salon
- Unique Pet Items
- All Natural Foods

(727) 345-8118

6798 Crosswinds Dr., suite C-108
 St Petersburg, Fl. 33710 bathandbiscuit@tampabay.rr.com

Wagonwheel Flea Market



Midway Between St. Petersburg & Clearwater
 1500 RENTAL BOOTHS 1000 UNDER COVER
 Open All Day Saturday and Sunday

DAVID HUNTLEY, Manager

7801 Park Blvd.
 Pinellas Park, Florida 33781

(Anyone Can Sell)
 Phone (727) 544-5319

(727) 344-1604

Extra Closet

100% Air Conditioned Storage

**KEN & Ed
 Managers**

**2401 Anvil Street N.
 St. Petersburg, FL 33710**



Officers and Board Members

| | | |
|----------------|-------------------|----------|
| President | Janet Herring | 345-6665 |
| Vice President | Mary Lou Mitchell | 345-4408 |
| Secretary | Clara Gibson | 343-4857 |
| Treasurer | Pete Brown | 343-7882 |
| Board Member | Anita Stelljes | 347-0337 |
| Board Member | Linda Sessions | 343-6196 |

Committees

| | | |
|------------------------|--|----------|
| Newsletter Editor..... | Michelle Steele | |
| | { jtcastele@yahoo.com } | |
| Traffic | Linda Mouriski | 381-4845 |
| Newsletter Committee | Tom Killian | 343-2041 |
| CONA Representative | Tom Killian | 343-2041 |
| Welcoming | Tom Killian | 343-2041 |
| Refreshments | Tom Killian | 343-2041 |
| Webmaster..... | Bob Miller | 343-4436 |
| | { BluegrassBob@Earthlink.net } | |

Advertising Prices

Our rates are reasonable and our newsletter reaches people in your area that can purchase your service. Newsletters are sent bi-monthly in January, March, May, July, September, November.

| | |
|-----------------------|-----------------|
| Business Card Size Ad | \$50.00 a year |
| ¼ Page Ad | \$130.00 a year |
| ½ Page Ad | \$250.00 a year |
| Full Page Ad | \$500.00 a year |

Call Bob Miller 343-4436



Jungle Terrace Web Site

We have a web site for the Jungle Terrace Civic Association. It is at URL www.Jungle-Terrace.org. It is available for viewing to anyone that has internet access. The web site has important organizational information, a Neighborhood map, the softcopy Newsletter and much more. The Newsletter and map are in PDF format.

If you don't have the Adobe PDF reader you can download it free at www.adobe.com Look for this button

Questions contact Webmaster Bob Miller at BluegrassBob@earthlink.net

727-343-4436



Important Phone Numbers

| | |
|--|----------------|
| Assistance & Resources | 211 |
| Emergencies | 911 |
| Community Policing Officer | 551-3183 |
| Police (non-emergency) | 893-7780 |
| (CASA) | 898-3671 |
| City Council Office | 893-7177 |
| Codes (get a case number) | 893-7373 |
| Elderly Information | 893-7101 |
| Garbage Collection Inf. | 893-7334 |
| Graffiti | 893-7394 |
| Library - St. Petersburg College | 341-7199 |
| Mayor's Action Center | 893-7111 |
| Mosquito Control | 464-7503 |
| PARC (Pinellas Assoc. for Retarded Children) | 345-9111 |
| Public Service Rep. (Debbie Larson) | 893-4138 |
| Rodent Control | 893-7360 |
| Schools; 74th St. Elementary | 893-2120 |
| Azalea Elementary | 893-2187 |
| Azalea Middle | 893-2606 |
| Street Lights (Progress Energy) | 1-800-228-8485 |
| Tip Line | 892-5000 |
| Water & Sewer Problems | 893-7261 |
| Walter Fuller Center | 893-7443 |
| Walter Fuller Pool | 893-7636 |
| Free smoke detector Or home inspection | 893-7233 |
| Congressman Bill Young | 893-3191 |
| Senator Nelson - Orlando Office | 1-407-872-7161 |
| Senator Martinez - " " | 1-407-254-2573 |

The Jungle Terrace Internet Discussion Group

If you have a computer and want to find out what is happening today in your area, please sign up.

The Jungle Terrace Civic Association has an Internet Discussion Group on which you can catch up on the latest "JT Happenings". This could range from request for recipes, special events to crime prevention. Or if you need to request a resource to assist you in a project.

Your input will be helpful in keeping our neighborhood safe and alerting the Association instantly to problems.

When you sign up all postings will appear on your computer.

To join the Jungle Terrace Discussion List please send a e-mail to Steve Plice at steveplice@verizon.net to get 'on board'.

Free to all Jungle Terrace Residents



**POLICE - FIRE
AMBULANCE**



**Non-Emergency
893-7780
EMERGENCY
911**

Jungle Terrace Civic Association
c/o Pete Brown
3030 Boca Ciega Dr. N.
St. Petersburg, FL 33710

PRSRST STD
U.S. POSTAGE PAID
St. Petersburg, FL
Permit No. 1084

THE VALLEE SKIN CARE STUDIO

Forte

Customized Facial
60 minutes
\$20

“You won’t leave The Valleeé
disappointed!”
~Bethany Fitzgerald

Contact

727-698-4909
Appointment Only



**Rene Valleé
Owner/Esthetician**

Services

Facials
Waxing
Make Up
Hot Stone Therapy

Location

622 1st Avenue South
St Petersburg
Fl 33701
2nd Floor
Suite 4

COPYRIGHT NOTICE.

Clipart used in articles in this publication is from MS Publisher 2007 and the MS Office Online, Clipart and Media Site.
Copyright © 2003 Microsoft Corporation, One Microsoft Way, Redmond, Washington 98052-6399 U.S.A. All rights reserved.