



2nd Quarter 2018

www.Jungle-Terrace.org

**Green Thumb Festival
April 28 + 29, 9am-4pm**

Meeting_____

Monday, July 16, 2018

(No April Meeting)

Walter Fuller Center-7891 26th Av N

Social 6:45 p.m. – Meeting 7:00 p.m.

Meeting Highlights:

HALL of HONORS

Speakers

City Councilman Charlie Gerdes

State Representative Kathleen Peters



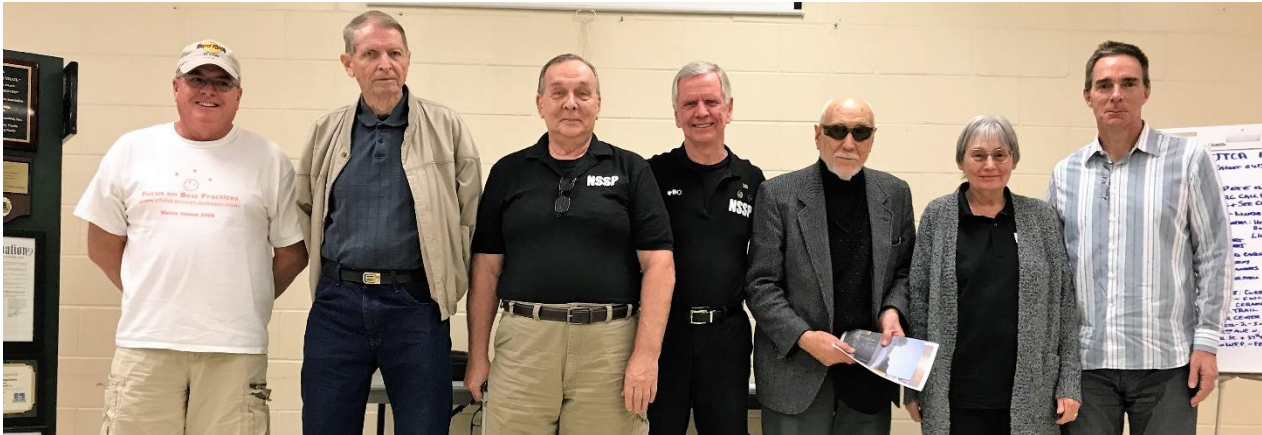
HALL of HONORS AWARD to Linda Mouriski, January 2018
Standing in for Linda is Erika Johnson

Trio of Presenters on SOLAR Electric



Lisa (LWV Coop), Dr. Ed, Jake (www.ViventSolar.com), Matt Gross, Homeowner

Officers and Board Members for 2018



Rich (B), Dr. Roland (B), Lauren (S), Dr. Ed (P), Yaro (B), Jill (T), Dale (B), (John (VP))



AWARDS Tower
Both sides + edges!



Megan, KEEP PINELLAS BEAUTIFUL



JTCA Volunteers Garden in Walter Fuller Park



Our State Rep. Kathleen Peters is shifting over to campaign for **County Commissioner**. She likes Ray Blacklidge as her successor. Mr. Blacklidge attended JTCA Meeting, asked to be on Email list, and plans more time with JTCA.



Ray Blacklidge for Florida House 69
www.RayBlacklidge.com

3 New St. Pete Museums, widely unique.

Museum of the American Arts and Crafts Movement, five story, 137,000-square-foot
Tom & Mary James Museum of Western + Wildlife Art, 80,000 square feet.
Imagine Museum, a collection of contemporary American Studio glass

<https://www.bizjournals.com/tampabay/news/2018/01/24/st-pete-welcomes-its-newest-museum-photo.html>

Florida Trend: St. Petersburg: Inviting, Inspiring and Growing Brighter Every Day

St. Petersburg is a bright star in one of the fastest growing metropolitan areas in the nation. To the west, are barrier islands with some of the nation's finest beaches. To the east, it rests on the expansive blue Tampa Bay.

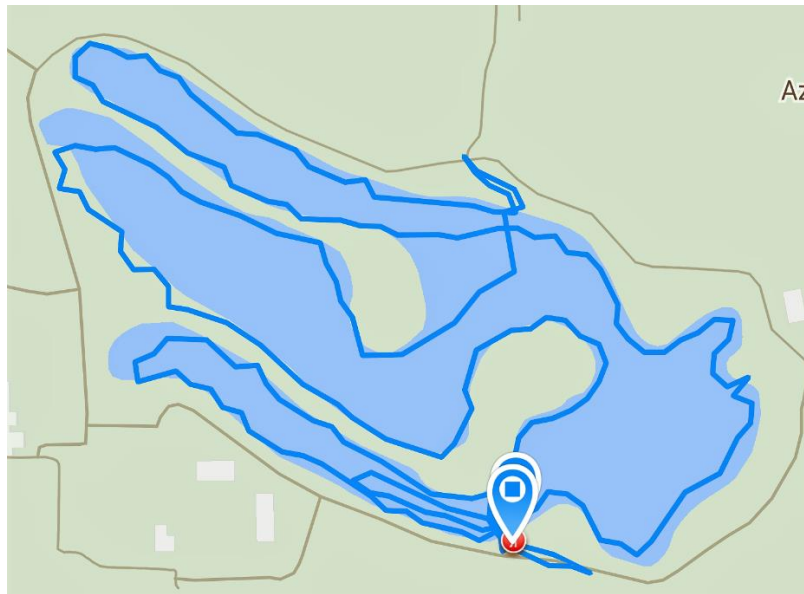
Home to world-class museums, Major League Baseball, a professional soccer team and events such as the Firestone Grand Prix of St. Petersburg, it is a metropolis of arts and entertainment. [\[Read full article\]](#)

Man in Jungle Lake: Mark Siler

4 Hours in Kayak

Filled 3 large tote baskets. 30+ tennis balls, 4 soccer balls, 2 baseballs, 1 softball, 1 golf ball, books, flip-flops, socks, gloves, countless plastic bottles & aluminum cans.

Travels in the lake – Blue Lines



Nice to see how many people talked with me and thanked me for picking up.
I'll go back soon with a long pole and hook to get things that were too far back and I could not reach. **Mark**

Hey Dr. Ed, That man, Mark Siler, deserves a medal! Great job! Thank you so much.
Chris, (Stormwater Team Leader, keeping Jungle Lake free of aquatic weeds)

February load – getting less!



Two New LIVE OAK Trees on Pinellas Trail

Prior trees 2 of 5) JT planted 3 years ago are in background.
Donated by Greg Descent Family ~ Northwest Collision.





Pinellas Trail Count at WF Bike Path

DOUBLE the count two years ago!
1,022 Users ~ 88% Bikes, 12% Pedestrians

Great news! That trail is one of our neighborhood gems! Thanks Dr. Ed! **John Prokop**

Stonehenge Park on Internet

Charlie Law's VIDEO of Stonehenge Park Celebration

<https://www.youtube.com/watch?v=8Lw9qxAn3eI>

+

Google: Stonehenge Park in St. Petersburg or on Pinellas Trail

NEW Light: Walter Fuller Park at 34th Ave and 80th Street



Arbor Age Tree Service DONATES 4 hours in Oak Cathedral!



Bobby in Bucket



Jerrod on Details



Lou + Dr. Ed remove
IRMA limbs from Lake

Work for JT neighbors: John Sweeny, Jill Silverstein, John Prokop, Dr. Ed.
Call Jerrod or Bobby 656-7854 arboragetreeservice@gmail.com

JUNGLE TERRACE Leads County in Real Estate Sales!

In Pinellas County, the two ZIPs with the most sales were west of booming downtown St. Petersburg — 33710, which includes Jungle Terrace, and 33713, encompassing Historic Kenwood. Each had 724 sales.

"The biggest thing: you can still get a good house for not so crazy pricing," agent Derrick Silvers said. "You're not in the beaches and not downtown but you're right in between."

And, prices are climbing. **Both ZIPs outpaced the bay area overall in price gains** last year — up 13.6 percent in 33710.

<http://www.tbo.com/news/business/realestate/Which-Tampa-Bay-ZIPs-had-the-richest-least-expensive-and-most-house-sales-in-2017-165478122>

**300+ Runners, Walkers, Dogs, Bikes, Children
Sunday Morning Event
JT section of Pinellas Trail**



Passing New Oak Trees and New Shelter by JTCA and NWCC.



Passing Jungle Terrace Volunteers improving Trail.

Jungle Lake ~ Health of Fish Population



Dr. Carlson, I'm following up on our previous discussion regarding concerns about the status of the fish population in Jungle Lake at Walter Fuller Park. I sent my staff to sample the fish population and am happy to report that overall, the fisheries are in good shape. Attached is a file summarizing what we found in the lake. I included pictures of some fish that were collected.

You were specifically concerned about the largemouth bass population. We used electrofishing techniques to sample fish out of a boat and collected 95 bass going around the entire shoreline. We collected bass at a rate of 2.04 fish per minute - a **very high** and successful collection rate. Most public lakes have a bass catch rate between .50 – 1.50 fish per minute.

Bass collected ranged from 4 – 20 inches in length, which is a healthy range... indicating fish are reproducing successfully (4 inch baby fish) and growing to at least 6+ pounds (20 inch fish). The relative weights (metric of how fat/ plump) of bass were low to mid 80's which is acceptable. No need to stock more largemouth bass since the population is reproducing successfully.

We saw plenty of food for largemouth bass to eat. The two main fish species favorite food items of bass, are bluegill and red-ear sunfish. We collected 125 bluegill at a rate of 2.69 fish per minute which is good. A total of 130 red-ear sunfish were collected at a rate of 2.80 fish per minute which is good. There is no need to stock any more forage fish species in the pond for bass to eat.

We observed only a few exotic fish species, which is good because there shouldn't be many for castnetters to catch. Exotic species such as nile, blue and blackchin tilapia are what castnetters look for when they fish. In conclusion, the fish populations in the lake at Walter Fuller Park are healthy and in good proportion. If you continue to observe castnetting, please contact our Law Enforcement Division at 1-888-404-3922, so a law enforcement officer can investigate.

If you have any questions, please feel free to contact me.

Regards! Eric Johnson, Fisheries Administrator, FWC – DFFM

Walter Fuller Park, St. Petersburg

Metric	Dec. 2017
Number Collected	95
All <u>Bass</u>	2.04 Fish/min

Length Data (in)

Mean	9
Median	9
Range (min - max)	4 - 20

Relative Weight

All Bass	82.60 (2.91)
Stock	82.44 (3.28)
Quality	85.25 (3.38)
Preferred	85.20 (5.30)
Memorable	N/A
Trophy	N/A

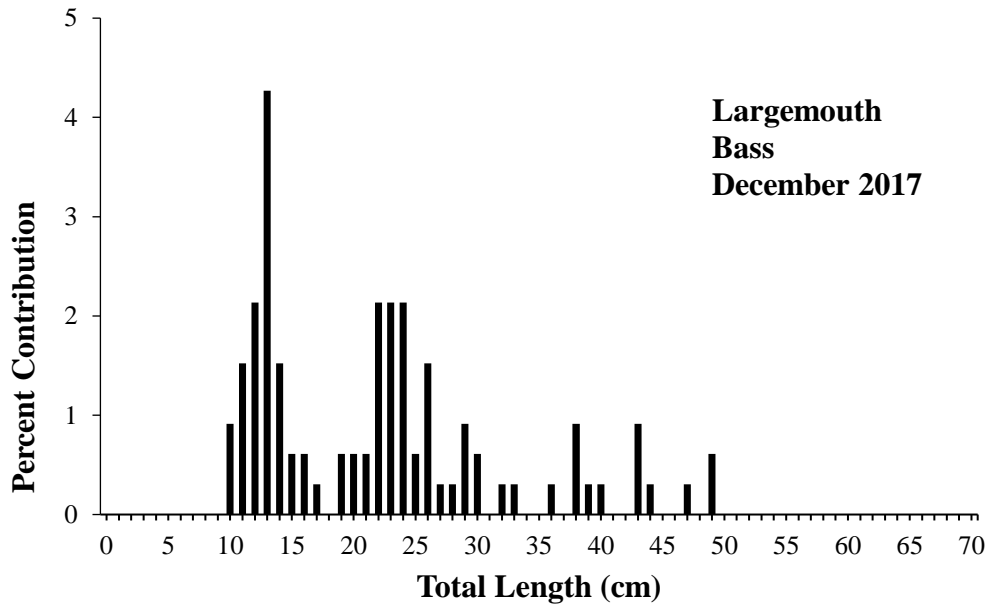


Figure 1. Length-Frequency distribution of Largemouth Bass collected by full pond perimeter electrofishing survey on Walter Fuller Lake, December 2017.





Metric	Dec. 2017
Number Collected	125
All <u>Bluegill</u>	2.69 Fish/min

Metric	Dec. 2017
Number Collected	130
All <u>Redear</u>	2.80 Fish/min



Species Found: Largemouth bass
Red-ear sunfish
Bluegill
American eel (1)
Vermiculated sailfin catfish (1)
Blackchin tilapia

PayPal Fraud Attempt. . . Fake Email

“We have noticed unusual activity... click link....”

Forward to PayPal spoofer@paypal.com

PAYPAL responds:

Thanks for letting us know about the suspicious email you received.

We'll investigate it, and may contact you with additional details.

If you haven't done so already, delete the email from your inbox.

If you clicked on any links or downloaded any attachments within the suspicious email or website, log into your PayPal account and view your account activity.

If you see any unauthorized transactions, go to the Resolution Center to report it.

It's also a good idea to change your password.

Additional Information & Help

Learn more about fake emails and spoof by visiting our Help Center.

Click Help & Contact on any page and then search for "fake emails" and "spoof".

Find help on changing your password and viewing your account activity in the Help Center.

Thanks for being a PayPal customer,

PayPal Security

AOL Fraud Attempt ... Fake Email

From: AOLMemberService@peoplepc.com (Note return address @PeoplePC.com)

Subject: Your AOL Payment Was Declined



Payment Declined | 3rd Notice

Dear AOL User,

Please Update Your Account

We recently wrote to inform you that your last payment was declined.

This is your second notice. We were unable to process your payment for your AOL Service.

You must update your billing information immediately to avoid any interruption to your services.

You can update your billing information online simply by going to the "[UPDATE ONLINE NOW](#)"

Please click on the reference below to verify your account.

<http://www.bill.aol.com>

Sincerely,

AOL Account Services

This email has been sent from an unmonitored email address, Please DO NOT reply to this e-mail. We are unable to respond to replies

“Craig’s List” Most common SCAM tried on Dr. Ed

Sold items for \$500. Sent check for \$2,150. Tips of SCAM: Excessive amount for “shipping.” Priority Mail return address in Oxnard, CA. Check from Travel Agency in Alaska. Multiple text inquiries daily if check cleared. Called Community Police Officer. “Common fraud. Check will not clear. Go to Bank for them to handle.” Notified Police, Bank, Return Address company by phone and email. Terse text to phone number, and call leaving message.

SAFETY TIPS....STAY SAFE.... Your Safety is #1

1. LONG - TERM PARKING

Some people left their car in the long-term parking at San Jose airport while away, and someone broke into the car. Using the information on the car's registration in the glove compartment, they drove the car to the people's home in Pebble Beach and robbed it. If we are going to leave the car in long-term parking, we should NOT leave the registration/insurance cards in it, nor your remote garage door opener. This gives us something to think about with all our new electronic technology.

2. GPS

Someone had their car broken into while at a football game. Their car was parked on the green adjacent to the football stadium and specially allotted to football fans. Things stolen from the car included a garage door remote control, money and a GPS prominently mounted on the dashboard. When the victims got home, they found that their house had been ransacked and about everything worth anything had been stolen. The thieves used the GPS to guide them to the house. They used the garage remote control to open the garage door and gain entry to the house. The thieves knew the owners were at the football game, they knew what time the game was scheduled to finish, so they knew how much time they had to clean out the house. They brought a truck to empty the house of its contents. If you have a GPS - don't put your home address in it. Put a nearby address (like a store or gas station) so you can still find your way home if you need to, but no one else would know where you live if your GPS were stolen.

3. CELL PHONES

I never thought of this! This lady has now changed her habit of how she lists her names on her cell phone after her handbag was stolen. Her handbag, contained her cell phone, credit card, wallet, etc., were stolen. Twenty minutes later when she called her hubby, from a pay phone telling him what happened, hubby says, "I received your text asking about our Pin number and I replied a little while ago." When they rushed down to the bank, the bank staff told them all the money was already withdrawn. The thief used the stolen cell phone to text "hubby" in the contact list and got hold of the pin number. Within 20 minutes he had withdrawn all the money from their bank account.

Lessons

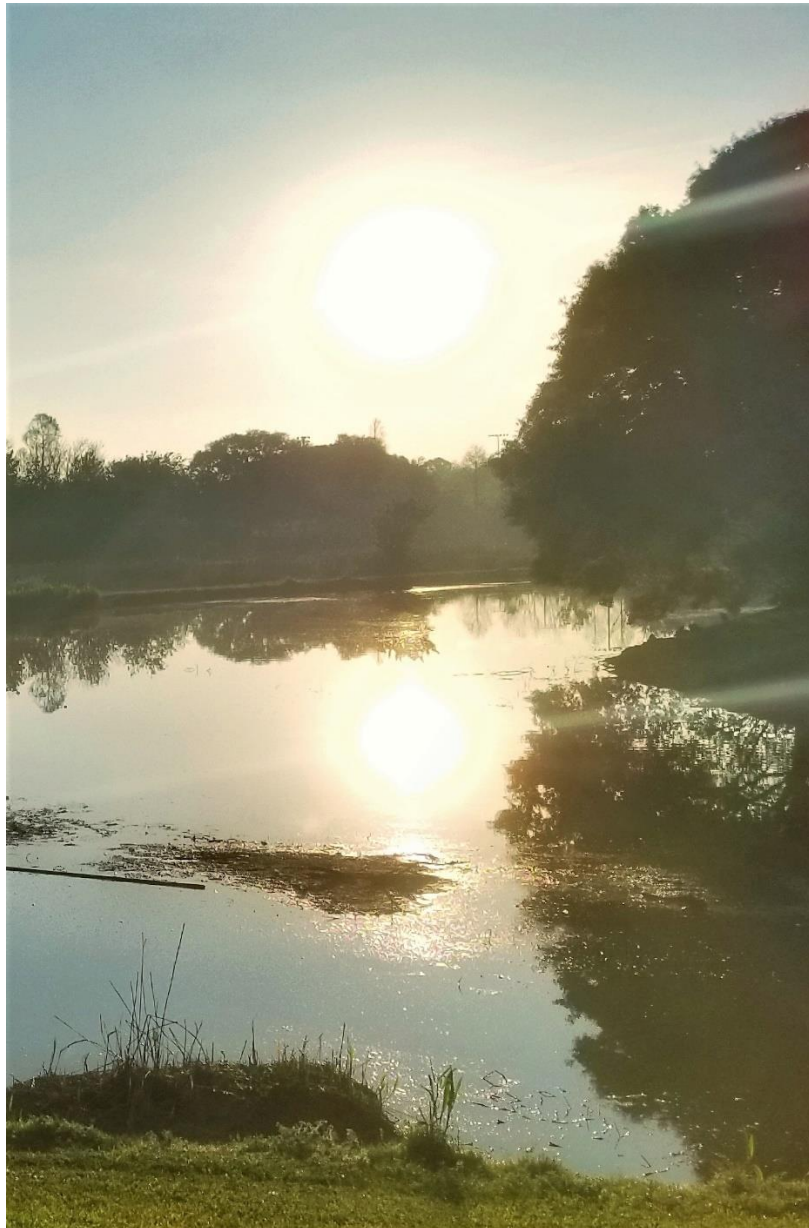
- a. Do not disclose the relationship between you and the people in your contact list. Avoid using names like Home, Honey, Hubby, Sweetheart, Dad, Mom, etc.
- b. Very importantly, when sensitive info is asked through texts, CONFIRM by calling back.
- c. Also, if you're texted by friends or family to meet them somewhere unusual, be sure to call back to confirm that the message came from them. If you don't reach them, be very careful about going unusual places to meet "family and friends" who text you.

4. PURSE IN GROCERY CART SCAM

A lady went grocery-shopping at a mall and left her purse in the children's seat of the cart while she reached something off a shelf. Wait till you read the WHOLE story! Her wallet was stolen, and she reported it to the store. After returning home, she received a phone call from Mall Security to say they had her wallet and though no money, it still had her personal papers. She immediately went to pick up her wallet, only to be told by Mall Security that they had not called her. By the time she returned home again, her house had been broken into and burglarized. The thieves knew that by calling and saying they were Mall Security, they could lure her out of her house long enough for them to burglarize it.



WF Park photos by Mark Siler



NEW Score Board for Field 5 at SPBC's "Baseball City"



BIG Actions in St. Pete in Carillon Area

St. Pete is growing fast and catching the attention of new companies, professionals, and developers. In 2017, over 3,000 new jobs were created, including 1,500 jobs in data analytics. The real challenge for many is finding a place to house this growth while maintaining affordability and ease of access.

Echelon, a local real estate firm, recently finished working with the City to re-zone the 16 acre lot behind Publix in Carillon Park. The City approved a master site plan for the entire property. Echelon listened to market demands when designing a cohesive live, work, and play space complete with an internal circulator, residential units, and green space. Echelon City Center will include 500,000 sq. ft. of office space, 700,000 sq. ft. of retail space, 1,500 residential units, and 120 hotel rooms.

Jabil announced, that after exploring alternative locations, they chose to stay in St. Peter because it is a terrific location and has great access to workforce and quality of life. They will expand their current campus by reconstructing one building and completely refurbishing two others.

Raymond James announced their plans to grow in St. Petersburg. After working with the City to remediate traffic concerns near their campus, they purchased three new buildings in Carillon Park. Raymond James plans to **hire 650 new employees** to occupy this new space.



Southern Living: The South's Prettiest Cities 2018

Southerners have a longstanding appreciation for pretty things. Grand column antebellum homes, snow-white fields of cotton, Mama's hot buttermilk biscuits - we like having a little eye candy on the horizon. We take major pride in our cities and all their charming qualities. From the historic avenues of Charleston to the white sandy beaches of St. Petersburg, the mountain vistas of Asheville to the river views of Savannah, the South boasts truly good-looking spots begging to be wandered and adored. [\[Read full article\]](#)

Lucky's Market Brings Natural & Organic to Jungle Terrace

Lucky's Market which started in Boulder, Colorado in 2003 is opening soon in St. Pete, located 6765 22nd Ave. N. With locations all over the country from Wyoming to Michigan and Ohio along with eight other states the current nearest location is in Sarasota. [\[Read full article\]](#)
<https://ilovetheburg.com/luckys-market-bringing-affordable-natural-organic-to-st-petersburg/>

www.tyronesquaremazda.com

ALWAYS
FAIR.
ALWAYS
SQUARE.

**TYRONE
SQUARE
MAZDA**

727-344-3344

Your Neighbor...hood Auto and Service Center

**Serving your community for over 10 years
We take pride in the fact that we are
"Always Fair. Always Square."**

**New Mazdas, Quality used, Certified pre-owned, Cars and Trucks
with Legendary Service Before and After the Sale.**

**Our state of the art service department can
accommodate any make and model.**

See us for all your service and tire needs.

**Tyrone Square Mazda
3300 Tyrone Blvd
St Petersburg, FL 33710
727-344-3344**

**OPEN
MON.-FRI. 9AM-8PM
SAT. 9AM-PM
SUN. 11AM-5PM (Sales)**



WWW.TYRONESQUAREMAZDA.COM

www.affordablemowers.com

Affordable Mowers

ECHO shindaiwa KOHLER



Periair@msn.com

3800 58th St. North

St. Petersburg, FL 33709

Phone (727) 347-3103

Fax (727) 341-1413

Sales, Service
& Repair

**56 YEARS NORTHWEST
ON TYRONE BLVD. COLLISION**



GREG DESCENT - OWNER

3577 TYRONE BLVD. N.
ST. PETERSBURG, FL 33710

LIFETIME WARRANTY

FREE ESTIMATES

727-347-8945

FAX: 727-344-1357

NORTHWESTAUTOCOLLISION.COM

**COMPLETE AUTO BODY REPAIR
& AUTO DETAIL CENTER**

James R. "Jim" Kennedy, Jr., Esq.



821-6888

Since 1982

856 2nd Avenue North, St Petersburg, FL 33701

PERSONAL ATTENTION FROM AN EXPERIENCED ATTORNEY

Wills & Trusts

Family Law

Personal Injury

Auto Accident

Medical Malpractice

Jim@jrk.law.com

FREE INITIAL CONSULTATION BY PHONE OR IN OFFICE



**5310 66TH STREET NO.
ST. PETERSBURG, FL 33709**
(727) 541-2453 (727) 549-0785 fax

www.ActionWheelsSport.com
actionped@aol.com



SCOOTERS



ELECTRIC VEHICLES



BICYCLES

Join our FREE  Email Mailing List
Privacy by 

Willow Tree Nursery, Inc.
4401 49th St. N. 727-522-2594

Quality Trees  Shrubs  Citrus  Vegetables  Fertilizers
Pesticides  Mulch and Soils  Ponds and Pond Supplies
Decorative Containers  Clay Pots and Saucers

www.WillowTreeNursery.com



WHITE HOUSE Custom Print and Embroidery

www.WHCustom.com

JT "NSSP" Shirts are created by WH Custom



7183 30th Avenue North,
St. Petersburg, FL 33710

PHONE: (727) 321-7398
FAX: (727) 323-5920

E-mail us:
info@whcustom.com