



**3rd Quarter 2019**

[www.Jungle-Terrace.org](http://www.Jungle-Terrace.org)

## **July Meeting**

**Monday, July 15, 2019**

Walter Fuller Center-7891 26th Av N  
Social 6:45 p.m. – Meeting 7:00 p.m.

**Councilman Charlie Gerdes**  
**State Rep. Jennifer Webb**  
**HALL of HONORS Jerrod Koontz**

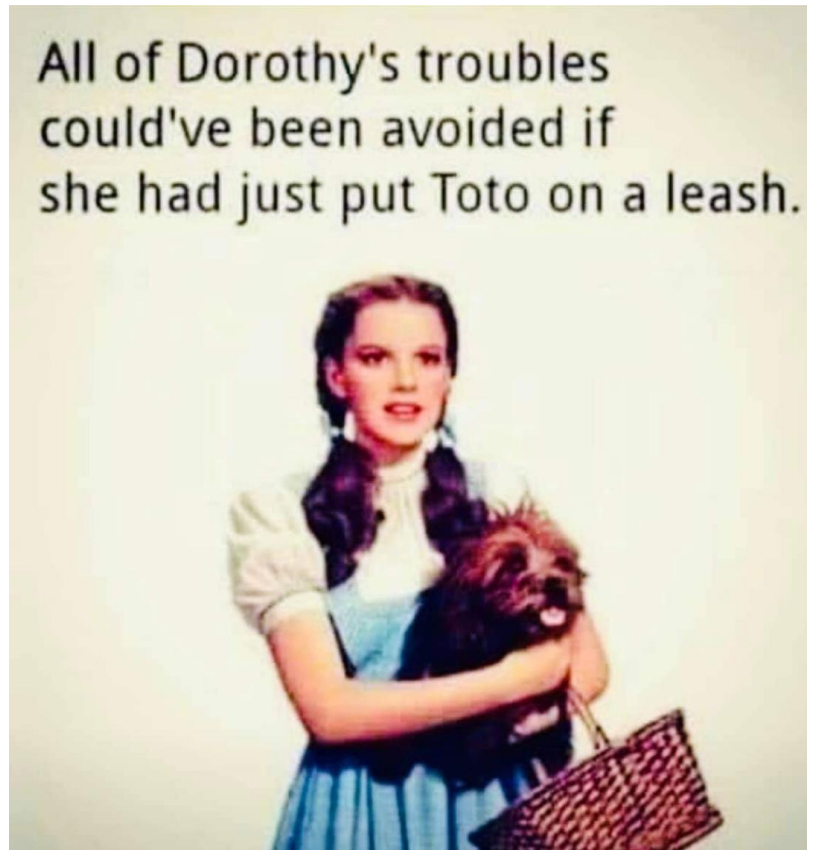
2019 Meeting Dates ~ Jan 21   April 15   July 15   Oct 21



**CODES Officer Shelley Thomas, Primary Presenter**



**Officer Pete shares good news.**



**Police issued 10+ Dog Law Citations in J.T.**



**Our Firefighters from Station 9 on 5<sup>th</sup> Ave at 66<sup>th</sup> St. N**



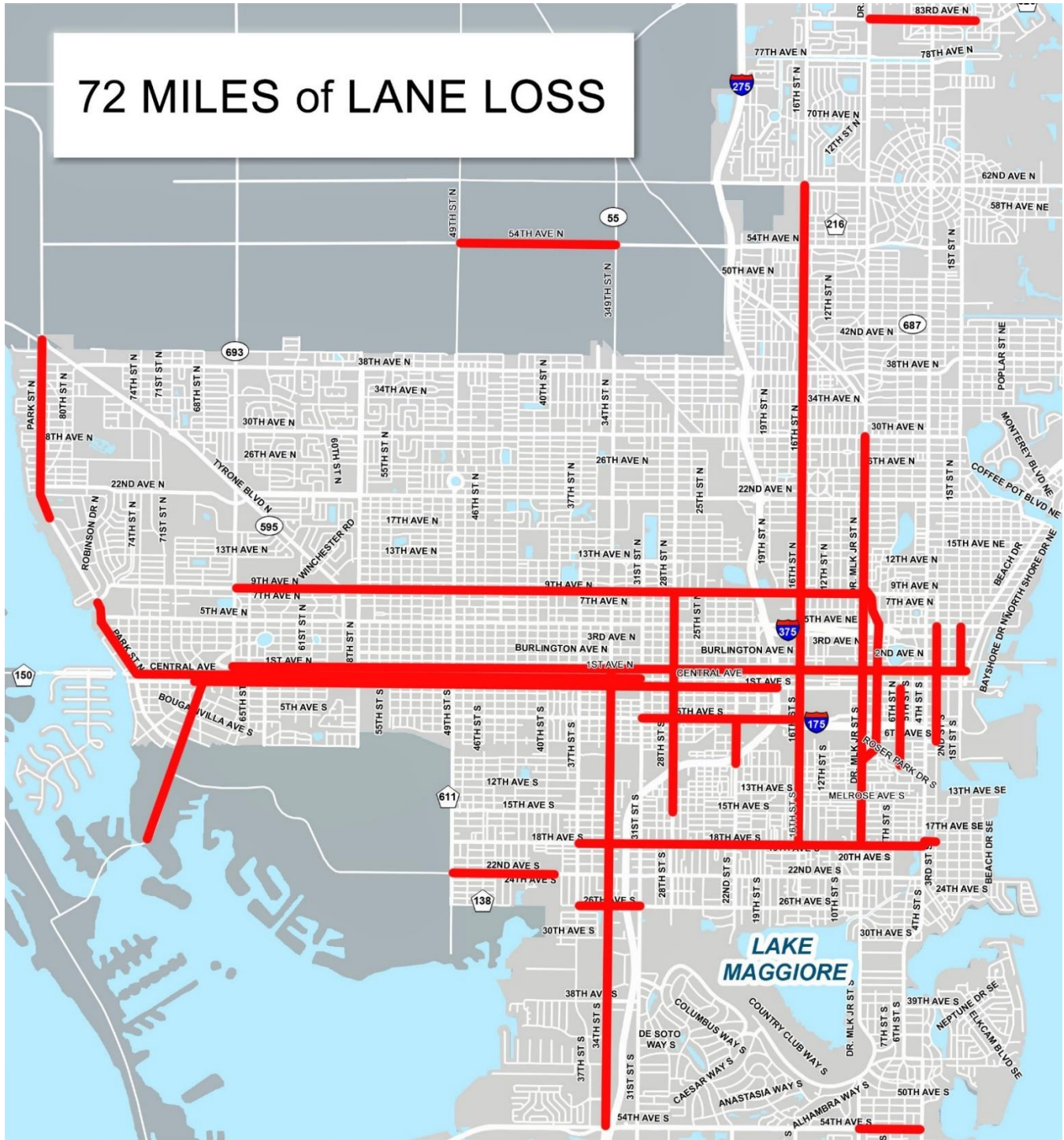


**Dr. Ed ~ ALARMING News: 72 Miles of Driving Lane Loss**



**Lively Post Meeting Discussions!**

# 72 Miles of Lane Loss



**LOOK at PARK Street! Residents HORRIFIED!**  
**LOOK at 16<sup>th</sup> St N & S! Losing 2 lanes: becomes one lane each direction!**  
**LOOK at 34<sup>th</sup> St N & S! Losing 2 Lanes! 50% more traffic per lane.**

**3 Agencies Eliminating Lanes: Complete Streets, City Transportation  
Bus Rapid Transit, PSTA County  
Forward Pinellas, County**

[http://www.stpete.org/transportation/docs/StPete\\_CS-ImplementationPlan\\_02-15-2019%20Draft\\_Compiled.pdf](http://www.stpete.org/transportation/docs/StPete_CS-ImplementationPlan_02-15-2019%20Draft_Compiled.pdf)



# Citizens Against Lane-Loss + Parking-Loss

## CALL

[www.CitizensAgainstLaneLoss.com](http://www.CitizensAgainstLaneLoss.com)

Hello Neighborhood Leaders  
and Caring Citizens!

Familiarize yourself with Mayor  
Kriseman's initiative, "Complete Streets,"  
A vast number of St. Petersburg Citizens  
and Neighborhoods are opposed to the  
design which eliminates lanes on major  
streets, eliminates needed parking for  
local businesses, and encourages  
dangerous cut-through traffic into  
neighborhoods.

***City Council has NO Vote.  
You are unrepresented!***

We are a group of concerned Neighbor-  
hood Leaders asking you to join with us  
to send a strong message to City Hall.  
"Back to the Drawing Board" is our  
rallying cry for Citizens Against Lane-  
Loss + Parking-loss. Visit our website:  
[www.CitizensAgainstLaneLoss.com](http://www.CitizensAgainstLaneLoss.com)

Complete Streets can be a major disaster  
or major enhancement for our city and  
individual neighborhoods. Our goal for  
CALL is shifting Complete Streets toward  
**Enhancement.**

Currently, City Council has no authority  
over the City Transportation Dept.

Lane-loss on MLK St. taught Council can  
only "discuss" the issue. Outrage from  
citizens: Council initiated an Ordinance  
giving Council vote authority on lane loss  
so the voices of Citizens can be heard.

**But right now**, St. Petersburg Citizens  
have **NO** Vote, and **NO** Voice through  
elected Council Members.

Many wide right-of-ways, creative routes  
and alternatives exist for design with  
NO Lane-Loss + NO Parking-Loss.  
County and City show it can be done.

Please invest time to visit our website  
[www.CitizensAgainstLaneLoss.com](http://www.CitizensAgainstLaneLoss.com)

to make an informed decision.

We invite You to join us as a  
Neighborhood and an Individual.

**Send Complete Streets  
"Back to the Drawing Board."**

[CALL411Active@gmail.com](mailto:CALL411Active@gmail.com) add to Address Book

**Thank You. Let's get this done!**

Lance Lubin, Eagle Crest Civic Assn.  
Dr. Ed Carlson, Jungle Terrace Civic Assn  
Dominick Griesi, Azalea HO Assn.  
Judy Ellis, Lakewood Estates Civic Assn.  
Bonnie Hargrett, Snell Isle PO Assn.  
Chris Ashley, North Kenwood Assn.  
Dr. Gordon Norton, Jungle Prada N.A.  
Theresa McEachern, Harbordale Assn.  
Matt Weidner, Eden Isle PO Assn.  
Nina Light, Allendale Crime Watch  
Dr. Livia Kohn, Central Oaks Park  
Brad Bell, Garden Manor N.A.  
Bill Oliver, Jungle Prada N.A.  
Heidi Sumner, Eagle Crest Civic Assn.  
Kenneth Conklin, Lakewood Terrace N.A.  
John Sweeny, Jungle Terrace Civic Assn.  
Jim Stitt, Allendale Civic Association  
Dr. Linn Sennott, Downtown Association  
Corey Givens, Lakewood Terrace N.A.  
Dr. Thomas Moscarillo, Central Oaks Park  
Sandy Bozeman, Jungle Prada N.A.  
Tom Rast, Citizen  
Melanie McElhiney, Kenwood  
Lauren Sanders, Eagle's Nest MHP  
Vicki Shuman, Rivera Bay N.A.  
Chris & Sharon Smith, Old Northeast  
Capt. M.K. Carlock, USN Ret. Eagle Crest  
Dean McLeod, Eagle Crest

# SAVE OUR STREETS.net



[www.SaveOurStreets.net](http://www.SaveOurStreets.net)

## GREEN THUMB Festival

Watch

<https://www.youtube.com/watch?v=ThTQoNUZyhg&feature=youtu.be>

## City to Buy Science Center

<https://stpetecatalyst.com/city-of-st-pete-has-deal-to-buy-science-center/>

The city plans to use part of the property to expand the capacity of the nearby Northwest Water Reclamation Plant. No decision has been made on what to do with the rest of the property.



## Jungle Terrace Board Requests Fish and Wildlife Conservation do Fish Study in Jungle Lake: SUPERB!

My staff recently completed fish sampling on Jungle Lake and in a nutshell, the fishery looks great! Below are fish pictures from their sampling trip along with a brief report of what they saw. Regards! Eric Johnson, Regional Fisheries Administrator, FWC

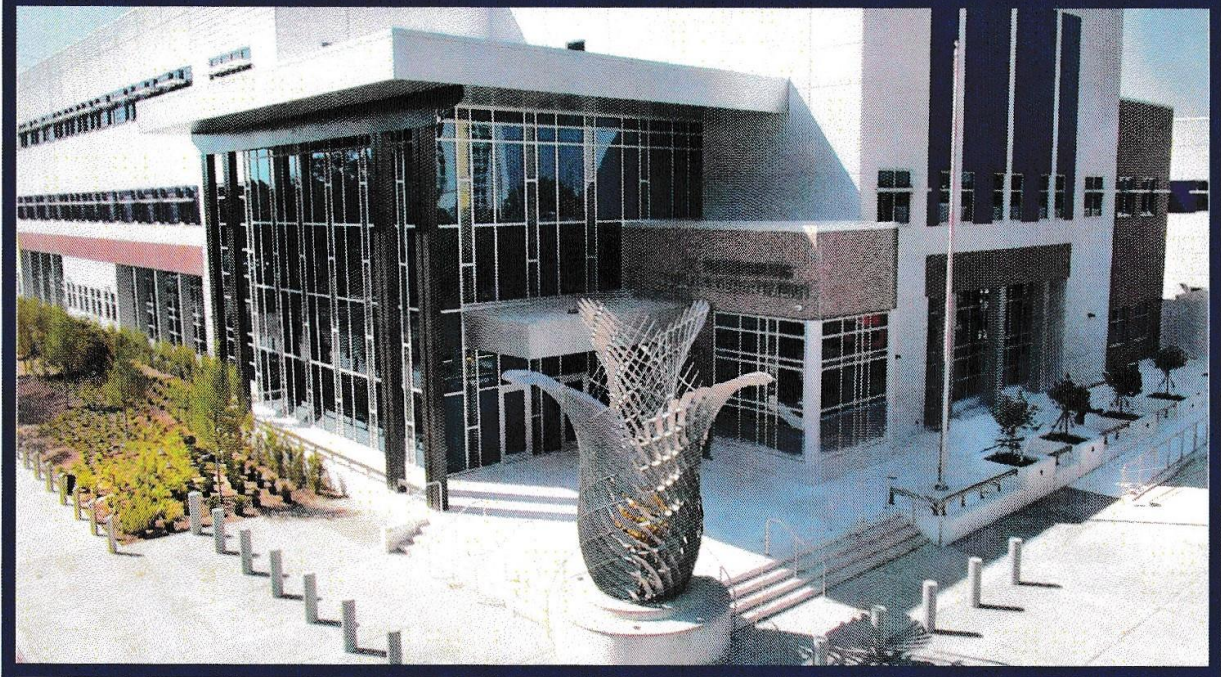
During our most recent electrofishing survey of the lake at Walter Fuller Park on May 22, 2019 we observed a healthy and relatively diverse population of fish including the following species: warmouth, red-ear sunfish, bluegill, brown bullhead catfish, largemouth bass and one American eel. By far, the most abundant species caught was the bluegill followed by largemouth bass. Both bluegill and largemouth bass populations were made up of a variety of fish sizes exhibiting healthy relative weights. There is also an abundance of forage fish species to support the growing largemouth bass population, indicated by an **increase** in electrofishing **catch rate**. In comparison to last year's survey of the lake, this year more native fish species were observed and **no** non-native species, like the vermiculated sailfin catfish and blackchin tilapia, were caught this time. Last year, blackchin tilapia was the most abundant species observed.





## NEW POLICE STATION

# St. Petersburg Police Department



**15 Oak Trees** planted along 1<sup>st</sup> Ave N for each Officer killed on duty.

Cost \$78.5 million, mostly Penny for Pinellas funds.

Category 5 Category 195mph winds. Emergency operations + city data storage.

Public Art: *Gladiolus* by Mark Aeling, and *Shielded* in lobby.

*Community DNA* by Catherine Woods coming to 13<sup>th</sup> St. side.

Building: 168,000 sq. ft., work space for 800 officers, civilian staff, volunteers.

Ventilated Personal Lockers: Air pumped into lockers to keep clothes dry/fresh

3 Generators for back up power.

1450 photo-voltaic panels on roof of parking garage. Run garage systems and power one third of building space.

320 parking places garage, 4 levels.

Energy Savings: Water cooling plant for high efficiency air conditioning,

Sensor controlled LED lighting, automated water controls, reduced Urban Heat Island Effect by concrete parking and light colored roof surfaces







Our CSO's with Chief Holloway

## Overall Crime

2017 to 2018

↓ 21%

5 Year Trend

↓ 30.9%



## Auto Theft

2017 to 2018

↓ 23.3%

5 Year Trend

↓ 39%



## Jungle Lake ~ MORE Improvements!

Stormwater Team did a great job adding dirt to elevate the “fingers” to islands. “Fingers” again serve design function of cleaning water prior to Boca Ciega Bay. And, digging out the excess muck where ditch flows in from 26th Av. Thank YOU! Stormwater crews!

Quite A Pile!



Quite a Machine!!





Quite a Big Job!

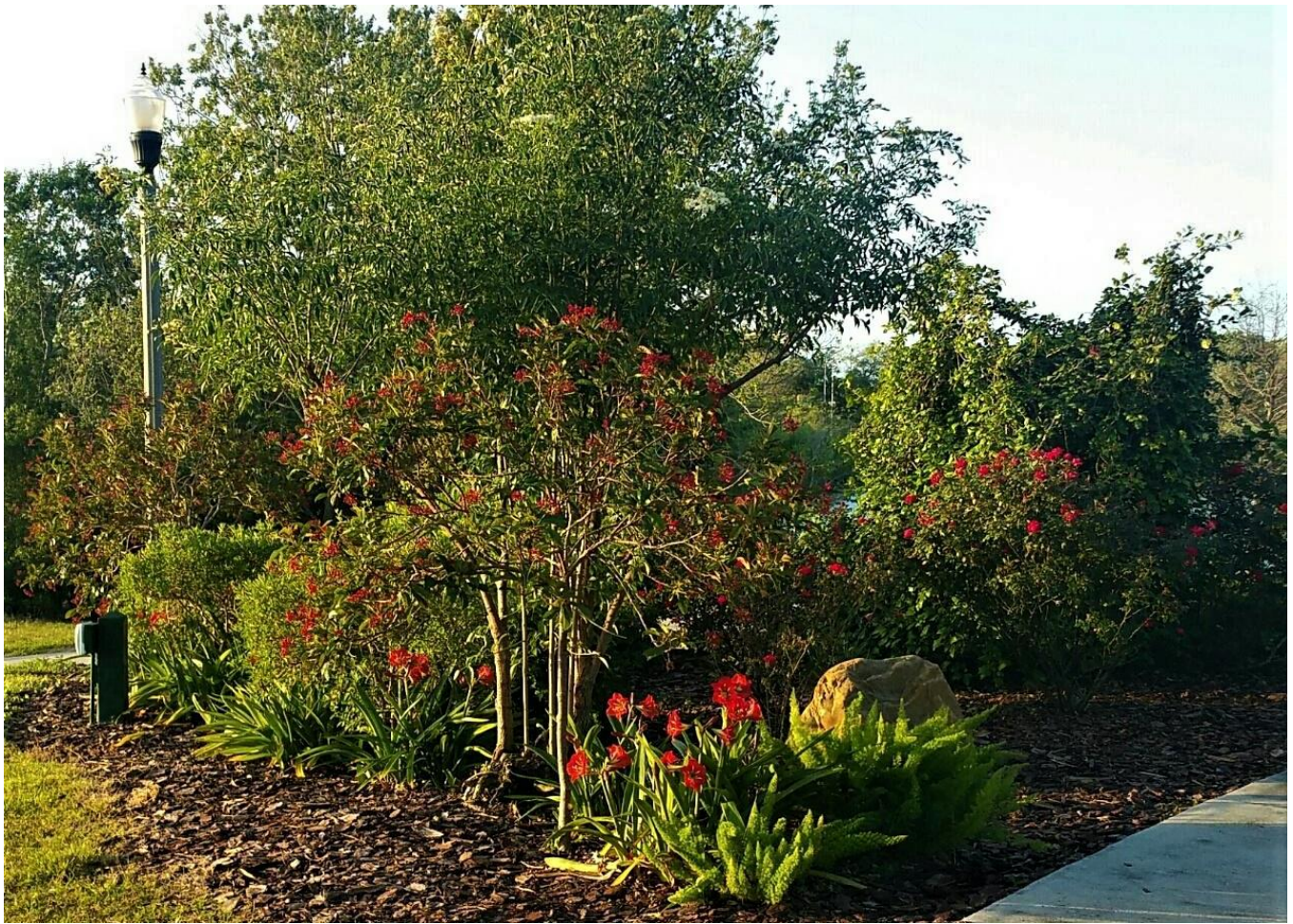


Quite a cleanup by Mark Siler and nephew!





Quite a Beautiful Lake and Park!~!







**\$90 million, five-story art museum nearing completion in ST PETE**



<https://stpetecatalyst.com/90-million-five-story-art-museum-nearing-completion/>



**JTCA gets NEW Dumpster for Car Wash  
Thanks to Asst. Sanitation Director Robert Turner!**



**Walter Fuller Ballpark ~ City Trimming Oaks and Palms**







**Beautiful!~!**

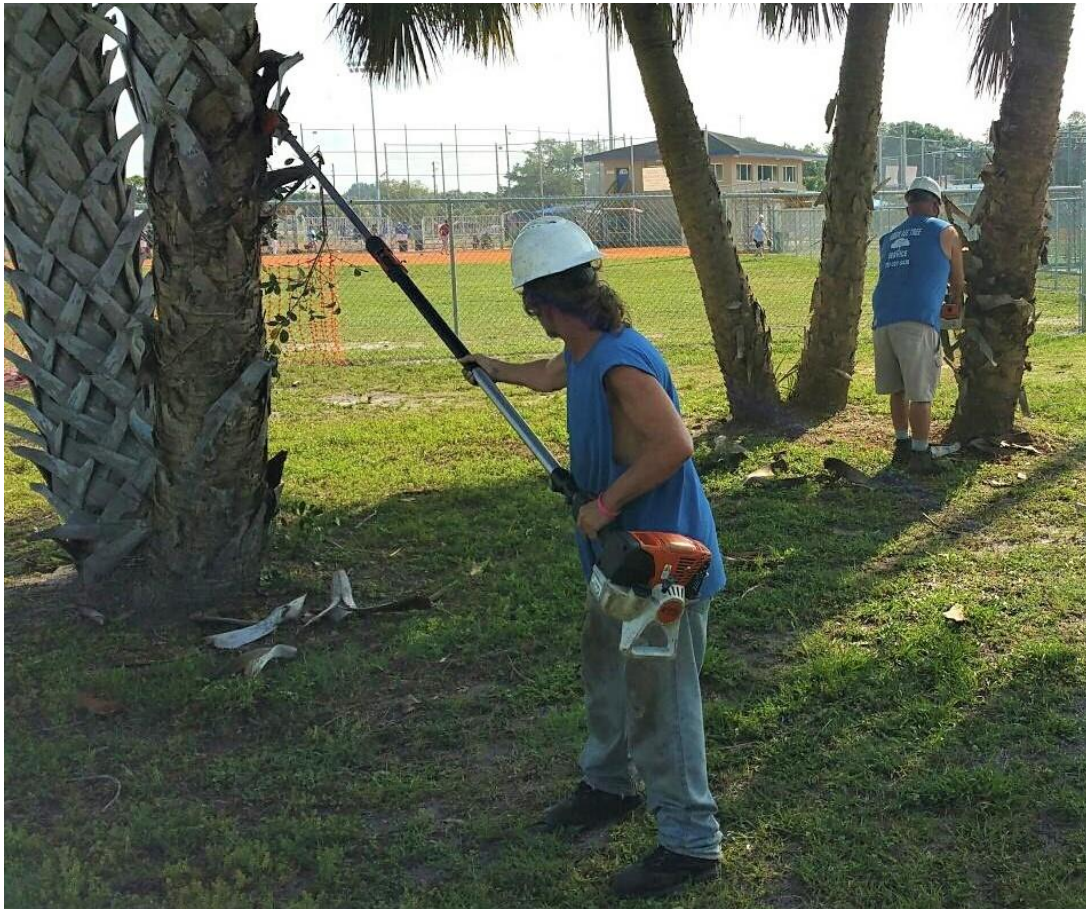


**Jungle Terrace Donates Flag  
Walter Fuller Ballpark  
Solar Light for Night**





**ARBOR AGE Tree Service, JERROD KOONTZ  
Donate Major “de-boot” and trim project in WF Park.**



**“De-boot” process**





**Beautiful trim and cleanup!**



## 2 Sidewalk Projects



**Infill Sidewalk 38<sup>th</sup> Av at Tyrone. Was dirt and weeds.**



**Sidewalk with ADA ramp at PARC**



# Street Lights

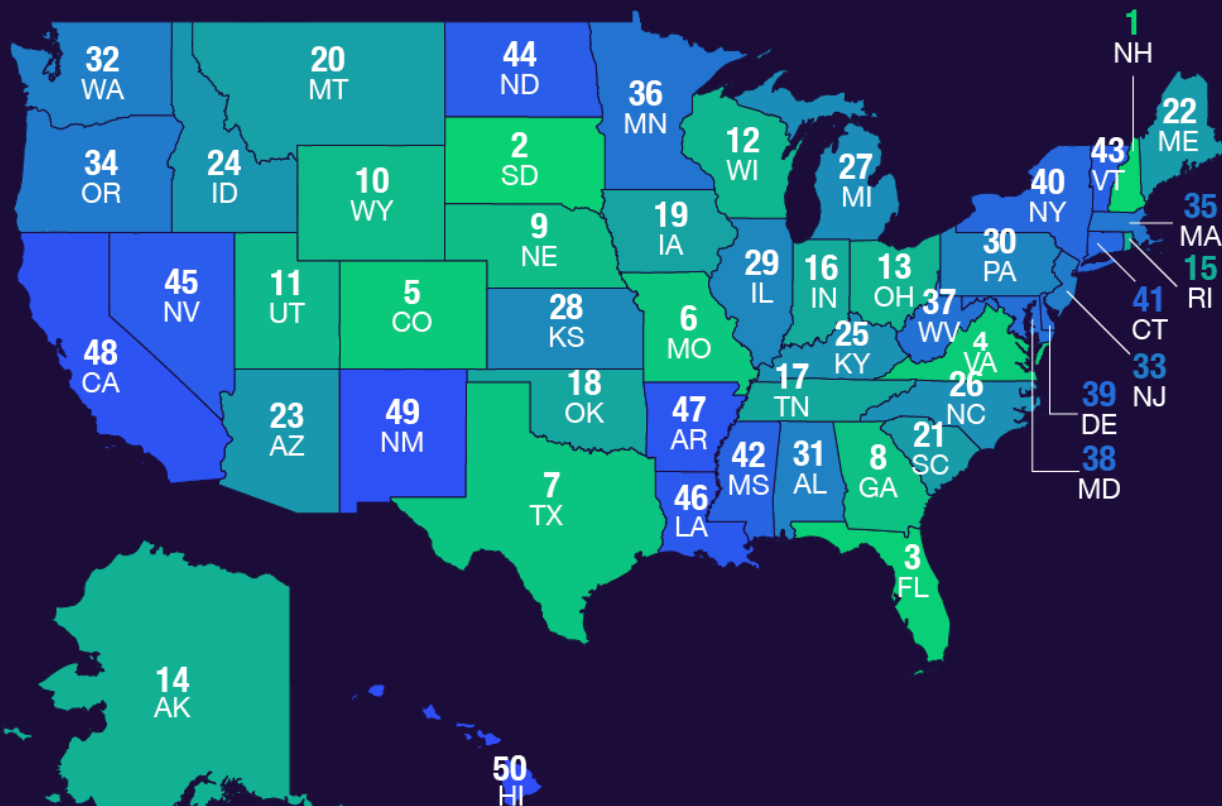
ALL Street Lights in Jungle Terrace are being Replaced with LED lights.  
Brighter and longer lasting, 100,000 hours.

\*\*\*

**Florida Top 3 for Using Taxpayer Money ~ Return on Investment**  
New Hampshire and South Dakota are 1 and 2

## 2019 BEST AND WORST STATES AT USING TAXPAYER MONEY

LOWEST  HIGHEST  
TAXPAYER RETURN-ON-INVESTMENT RANK



SOURCE: WALLETHUB

YAHOO!  
FINANCE



## Most of Tampa Bay Meeting Water Clarity Goals

Year	Old Tampa Bay	Hillsborough Bay	Middle Tampa Bay	Lower Tampa Bay
1975	Red	Red	Red	Green
1976	Red	Red	Red	Yellow
1977	Red	Red	Red	Red
1978	Red	Red	Red	Yellow
1979	Red	Red	Red	Red
1980	Red	Red	Red	Red
1981	Red	Red	Red	Red
1982	Red	Red	Red	Red
1983	Red	Yellow	Red	Red
1984	Red	Green	Red	Yellow
1985	Red	Red	Red	Yellow
1986	Red	Yellow	Red	Green
1987	Red	Yellow	Red	Green
1988	Yellow	Green	Yellow	Green
1989	Red	Yellow	Red	Yellow
1990	Red	Green	Red	Yellow
1991	Green	Yellow	Yellow	Yellow
1992	Yellow	Green	Yellow	Yellow
1993	Yellow	Green	Yellow	Yellow
1994	Yellow	Yellow	Red	Red
1995	Red	Yellow	Red	Yellow
1996	Yellow	Green	Yellow	Green
1997	Yellow	Green	Red	Yellow
1998	Red	Red	Red	Red
1999	Yellow	Green	Yellow	Yellow
2000	Green	Green	Yellow	Yellow
2001	Yellow	Green	Yellow	Yellow
2002	Yellow	Green	Green	Green
2003	Red	Yellow	Green	Yellow
2004	Red	Green	Green	Yellow
2005	Green	Green	Yellow	Yellow
2006	Green	Green	Green	Green
2007	Green	Green	Green	Green
2008	Yellow	Green	Green	Yellow
2009	Yellow	Yellow	Green	Green
2010	Green	Green	Green	Green
2011	Red	Green	Yellow	Green
2012	Green	Green	Green	Green
2013	Green	Green	Green	Green
2014	Green	Green	Green	Green
2015	Yellow	Green	Yellow	Green
2016	Yellow	Green	Green	Green
2017	Yellow	Green	Green	Green
2018	Yellow	Green	Green	Green

The annual report card prepared by Tampa Bay Estuary Program (TBEP) concluded that while all 4 major bay segments had sufficient water clarity to allow sunlight to penetrate to the bay bottom and support the growth of underwater seagrasses, Old Tampa Bay once again exceeded its average annual target for chlorophyll-a. This indicator describes the amount of microscopic algae in the water column and can contribute to shading and die-offs of seagrasses.

Both average visible light penetration and year-to-year algae abundances are critical water quality indicators in Tampa Bay. The yearly results are compared to established targets with summary in a simple report card with a red, green and yellow color system. "Green" means a bay segment is meeting both measures of water quality on average, while "red" means it is not meeting either. "Yellow" indicates that an area failed to meet either chlorophyll or water clarity targets for the year - which is the case with Old Tampa Bay in 2018 (Figure I). When water quality does not consistently meet established targets, local resource managers work to address the causes of the decline.

Improving water quality throughout the bay has been critical to a nationally-recognized recovery of seagrasses that is the foundation of a healthy Tampa Bay. Since surpassing the restoration goal of 38,000 acres of seagrass in 2014, seagrasses in Tampa Bay have remained relatively stable. 2016 estimate is total of 40,618 acres.



# Weekly Newsletter

Spring Edition



## Announcements



KEEP PINELLAS BEAUTIFUL'S  
**SUMMER  
WORKSHOP**  
Registration Now Open

[Register Here](#)



Shop at Lucky's Market St. Petersburg on  
**Tuesday, April 23<sup>rd</sup>** and 10% of the sales  
from the day will go to **Keep Pinellas Beautiful**.

**Lucky's Market**

6765 22nd Avenue N, St. Petersburg, FL 33710 | Open Daily 7am-10pm



[More Information](#)



## Doing Beautiful Things



KPB partnered with Florida Aquarium, City of St. Petersburg, and Tree Inc. to assist **50 volunteers** to plant **200 Red Mangrove** and remove over **130 pounds of debris** from Maximo Park. Awesome work everyone!

### Internship Opportunities

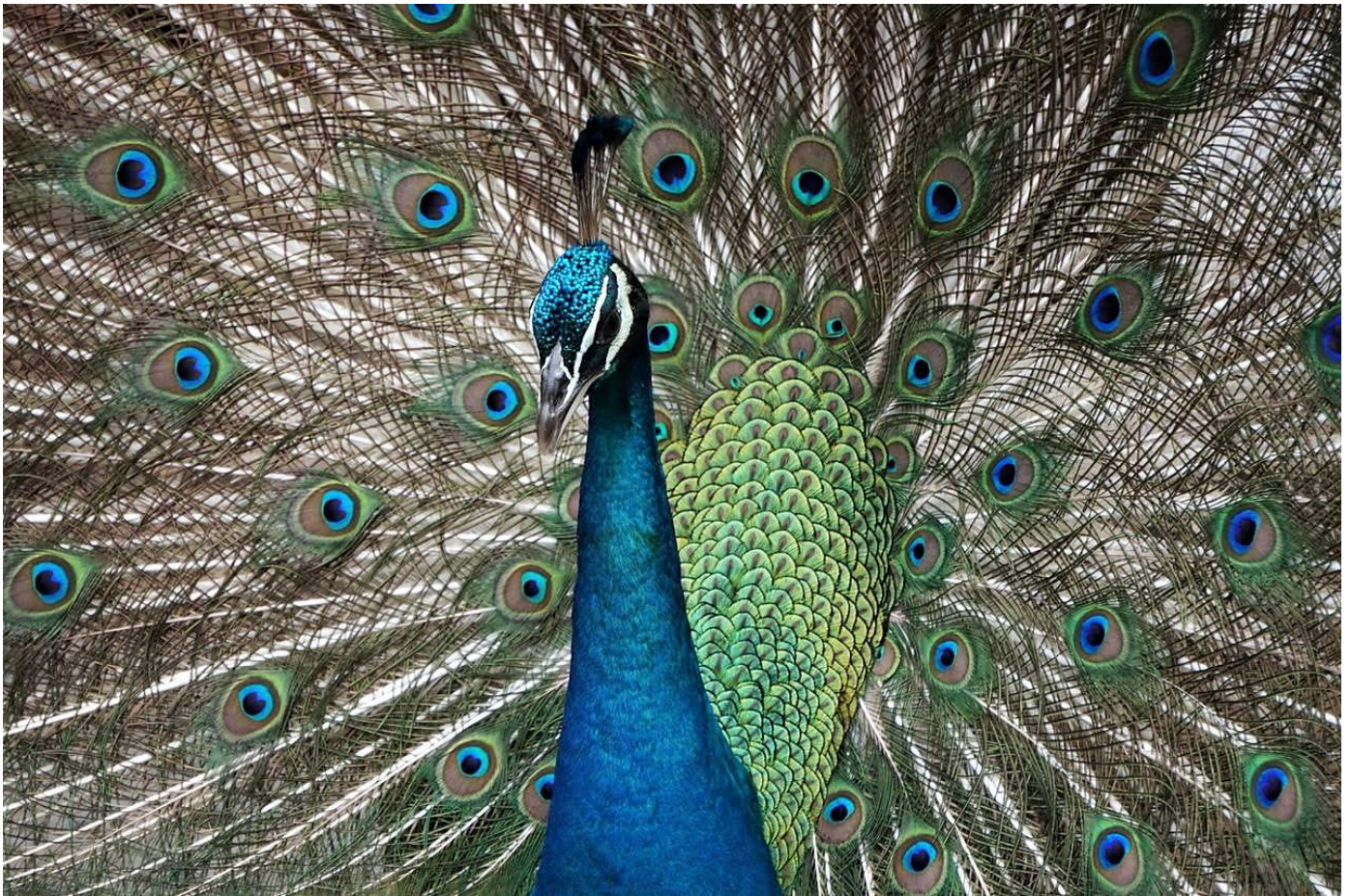
Interested in gaining experience working with an environmental nonprofit? Keep Pinellas Beautiful is recruiting for 2019 Summer interns to learn skills in grant writing, infield environmental conservation, educational program development, social media, and event planning. For more information please contact Stephanie Ellington at [Sellington@kpbcares.org](mailto:Sellington@kpbcares.org) by April 30th.



**Roseate Spoonbill visited Jungle Lake**



Peacock at Sacred Lands by Jungle Prada. Photo by Stan Silverstein





[www.tyrone-square-mazda.com](http://www.tyrone-square-mazda.com)

ALWAYS  
FAIR.  
ALWAYS  
SQUARE.

**TYRONE  
SQUARE  
MAZDA**

727-344-3344

## Your Neighbor...hood Auto and Service Center

Serving your community for over 10 years  
We take pride in the fact that we are  
"Always Fair. Always Square."

New Mazdas, Quality used, Certified pre-owned, Cars and Trucks  
with Legendary Service Before and After the Sale.

Our state of the art service department can  
accommodate any make and model.  
See us for all your service and tire needs.

**Tyrone Square Mazda**  
3300 Tyrone Blvd  
St Petersburg, FL 33710  
727-344-3344

**OPEN**  
MON.-FRI. 9AM-8PM  
SAT. 9AM-PM  
SUN. 11AM-5PM (Sales)



[WWW.TYRONESQUAREMAZDA.COM](http://WWW.TYRONESQUAREMAZDA.COM)

[www.affordablemowers.com](http://www.affordablemowers.com)

# Affordable Mowers

**ECHO** shindaiwa **KOHLER**



[Periair@msn.com](mailto:Periair@msn.com)

3800 58th St. North

St. Petersburg, FL 33709

Phone (727) 347-3103

Fax (727) 341-1413

Sales, Service  
& Repair



**56 YEARS** **NORTHWEST**  
ON TYRONE BLVD. **COLLISION**

**GREG DESCENT - OWNER**

3577 TYRONE BLVD. N.  
ST. PETERSBURG, FL 33710



**LIFETIME WARRANTY**

**FREE ESTIMATES**

**727-347-8945**

FAX: 727-344 1357

[NORTHWESTAUTOCOLLISION.COM](http://NORTHWESTAUTOCOLLISION.COM)

**COMPLETE AUTO BODY REPAIR  
& AUTO DETAIL CENTER**

**James R. "Jim" Kennedy, Jr., Esq.**



**821-6888**

Since 1982

856 2nd Avenue North, St Petersburg, FL 33701

**PERSONAL ATTENTION FROM AN EXPERIENCED ATTORNEY**

**Wills & Trusts**

**Family Law**

**Personal Injury**

**Auto Accident**

**Medical Malpractice**

[Jim@jrklaw.com](mailto:Jim@jrklaw.com)

**FREE INITIAL CONSULTATION BY PHONE OR IN OFFICE**





**5310 66TH STREET NO.  
ST. PETERSBURG, FL 33709**  
(727) 541-2453 (727) 549-0785 fax

[www.ActionWheelsSport.com](http://www.ActionWheelsSport.com)  
[actionped@aol.com](mailto:actionped@aol.com)



**SCOOTERS**



**ELECTRIC VEHICLES**



**BICYCLES**

Join our FREE  Email Mailing List  
Privacy by 

**Willow Tree Nursery, Inc.**  
4401 49th St. N. 727-522-2594

Quality Trees  Shrubs  Citrus  Vegetables  Fertilizers 

Pesticides  Mulch and Soils  Ponds and Pond Supplies 

Decorative Containers  Clay Pots and Saucers 

[www.WillowTreeNursery.com](http://www.WillowTreeNursery.com)



# WHITE HOUSE Custom Print and Embroidery

[www.WHCustom.com](http://www.WHCustom.com)

JT "NSSP" Shirts are created by WH Custom



7183 30th Avenue North,  
St. Petersburg, FL 33710

PHONE: (727) 321-7398  
FAX: (727) 323-5920

E-mail us:  
[info@whcustom.com](mailto:info@whcustom.com)